



20

24

DSC® distance
studio
consultants

**Pre-qualification
(Project Management)**

When we started to think about identifying ourselves and to find our true nature, we found that we are different individuals. Some are more creative than others. Some are more practical. Some are more resilient.

But... what we have in common is the passion to produce unique and distinguished work. We have the will to go the extra mile... to go the Distance..

Table of Content

06

Who We Are

20

Project
Management
Projects

134

Contact Us



Who We Are

Distance Studio Consultants was founded in Cairo, Egypt in 2000 as a small scale yet tightly structured alliance between four partners soon joined by a fifth a year later. DSC is an experienced multidisciplinary engineering consultancy firm, with more than 650 Permanent engineers in all disciplines and twenty three years of experience. DSC works to ensure beauty, character and comfort in the environment and lifestyles of the future. DSC is an ISO certified engineering consulting firm that provides a comprehensive package of services in Africa, the Middle East and Asia.

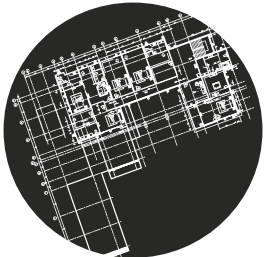
Mission

DSC is committed to produce spaces and communities that are functional, comfortable, sustainable and aesthetically pleasing. DSC caters to clients' needs, yet strives to exceed their expectations. Throughout the process of Concept Development to Construction on the ground, DSC works hand-on-hand with its Clients, enabling their dreams of shaping the future to come true.

Vission

DSC works to ensure beauty, efficient, comfort environments and life style of the future.

Our Services



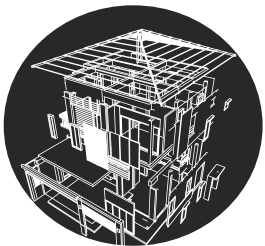
Master Planning

Through the balanced integration of road networks, green spaces, commercial centers, and living quarters, DSC creates community spaces that make work, recreation, and daily life both convenient and pleasurable.



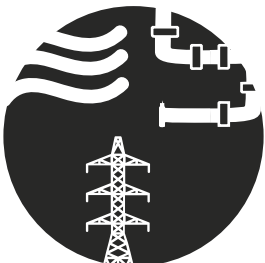
Architecture

DSC designs spaces and ambiances to best meet Clients, functional and aesthetic needs. It carefully integrates finished spaces with their structural support systems, coordinating between the relevant engineering disciplines and providing comprehensive plans for construction from start to end



Structure

DSC teams of structural engineers analyze projects' physical requirements and constraints to design optimal support systems that ensure safety and serviceability



MEP

DSC mechanical, electrical and plumbing (MEP) engineers design and oversee the coordination of the plumbing, heating ventilation and air conditioning (HVAC), and electrical power systems of each structure, complex, or community to ensure utmost reliability and efficiency



Infrastructure

To enable, sustain, and enhance planned communities, DSC provides a full range of infrastructure services including road networks, electrical grids, water and sewage networks, gas lines, and telecommunications routing



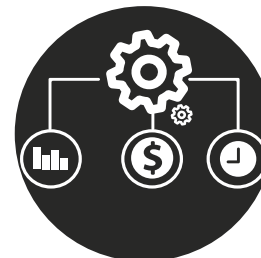
Landscape

From the soft scape of aesthetic and shading foliage to the landscape of pathways, signage, benches, and waterworks, DSC designs outdoor spaces that complement its built structures and provide environments in which to breathe and play



Interior Design

DSC designs the interior dynamics of built spaces to be welcoming, comfortable environments. Through the use of shadow and light, color and texture, green foliage, and furnishings and finishing, DSC shapes interior spaces into places you want to be in.



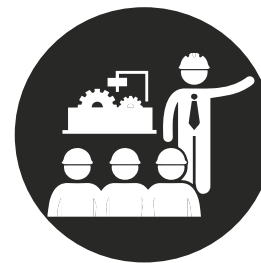
Project Management

DSC believes that each project is unique in that it is not a routine operation, but a specific set of operations designed to accomplish a singular goal by applying our Team's Knowledge, Skills, tools and techniques to meet project requirements



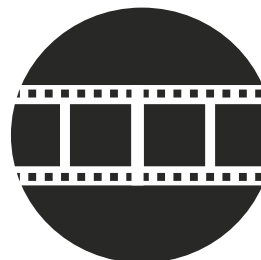
Construction Supervision

DSC provides professional construction supervision, specifically tailored to successfully deliver your project. Our highly experienced personnel can effectively control and supervise every aspect of the construction work



Construction Management

Our CM Team skillfully manage the project's stakeholders in order to deliver the project on time, at or under budget, and to the Owner's expected standard of quality



Animation

In order for our Client's to have the full design experience; we have a department for the 3D Renderings, creating storyboards, animating 3D to walk them through our designs

Awards

155

We are ranked as 155 from the top 225 international design firms according to the ENR in 2022

ENR
Engineering News-Record

015

We are ranked as one of the top 15 international design firms in mixed-use buildings sector in 2021

ENR
Engineering News-Record

001

MEED announced DSC as the Architecture Practice/Firm of the year of 2018 in the GCC

MEED
Intelligence.Events.Insight

001

From Top 6 Consultants of the year of 2019 according to the MEED

MEED
Intelligence.Events.Insight

001

We ranked as the best Luxury Architect Interior Design Studio in Egypt in 2021 according to The Luxury Lifestyle Award

Luxury
LIFESTYLE
AWARDS

002

West Bay North Beach Development ranked as 2 of 748 participants in RTF Award 2021

rtf

001

Abo Simbel Resort ranked as 1 of 748 participants in RTF Award 2021

rtf

001

Solas Office Building ranked as 1 of 748 participants in RTF Award 2020

rtf

001

Shatek El Qurm ranked as 1 of 748 participants in RTF Award 2019

rtf

002

Al Raha Residential Buidling ranked as 2 of 748 participants in RTF Award 2018

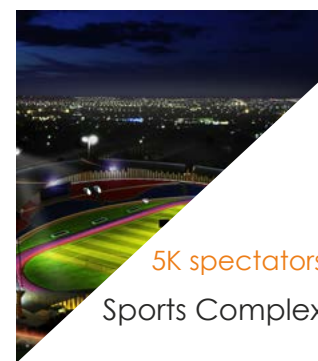
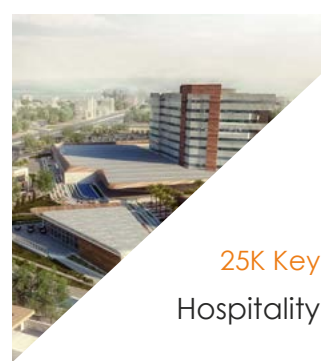
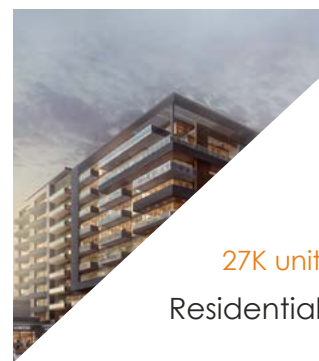
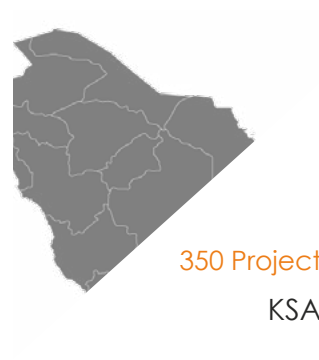
rtf

001

We were ranked from the top Design Companies in Egypt according to the Luxury Award

Luxury
LIFESTYLE
AWARDS

Achievements



Our Team

46 Master Planning
Architects

59 Designers

38 Landscape
Architects

37 Structural
Engineers

19 Civil
Engineers

91 Architectural
Engineers

22 Interior
Designers

23 Infrastructure
Engineers

92 MEP
Engineers

24 Quantity
Surveyors

12 Project
Managers

20 Construction
Supervision

54 BIM
Engineers

35 Feasibility Study
Engineers

14 Cad
Operators

29 Construction
Management

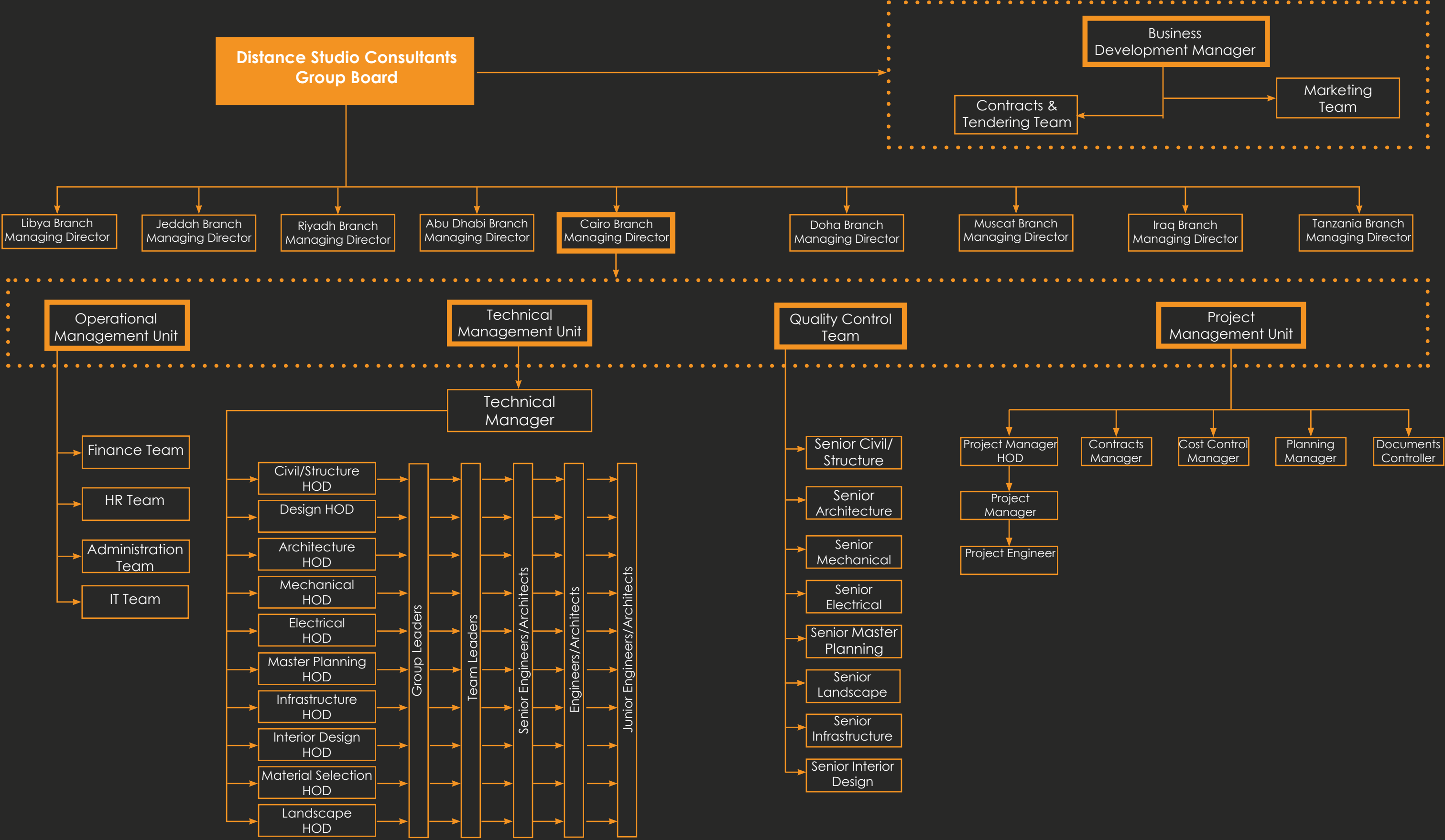
16 QA/QC
Engineers

37 Graphic
Designers

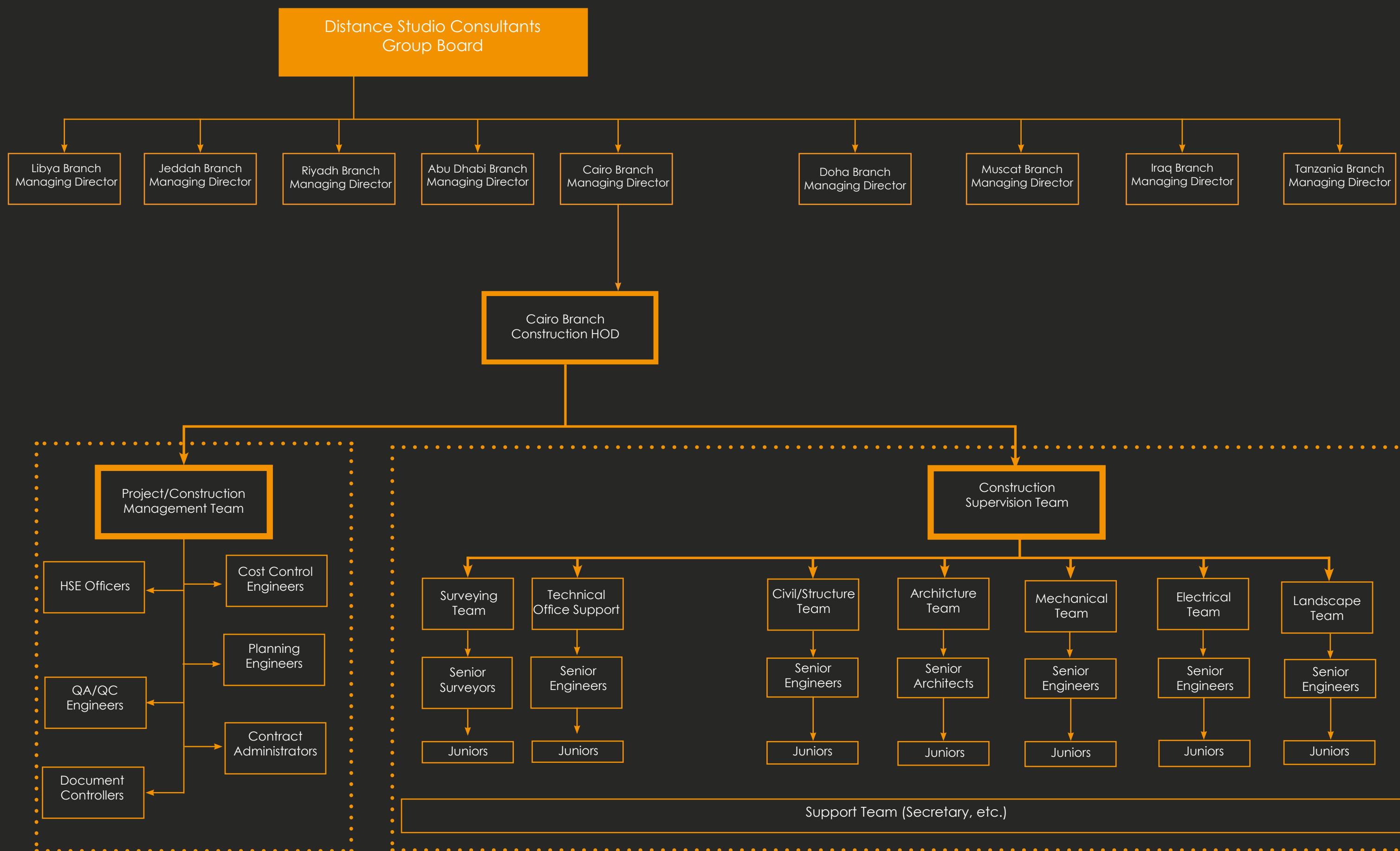
36 Animation

39 Business
Development

Design Organization Chart



Company Organization Chart



PROJECT MANAGEMENT

Development Plan of Ras El Hekma Water Front City

Ras El Hekma, Egypt

Egypt United Nations Habitat

Land Area

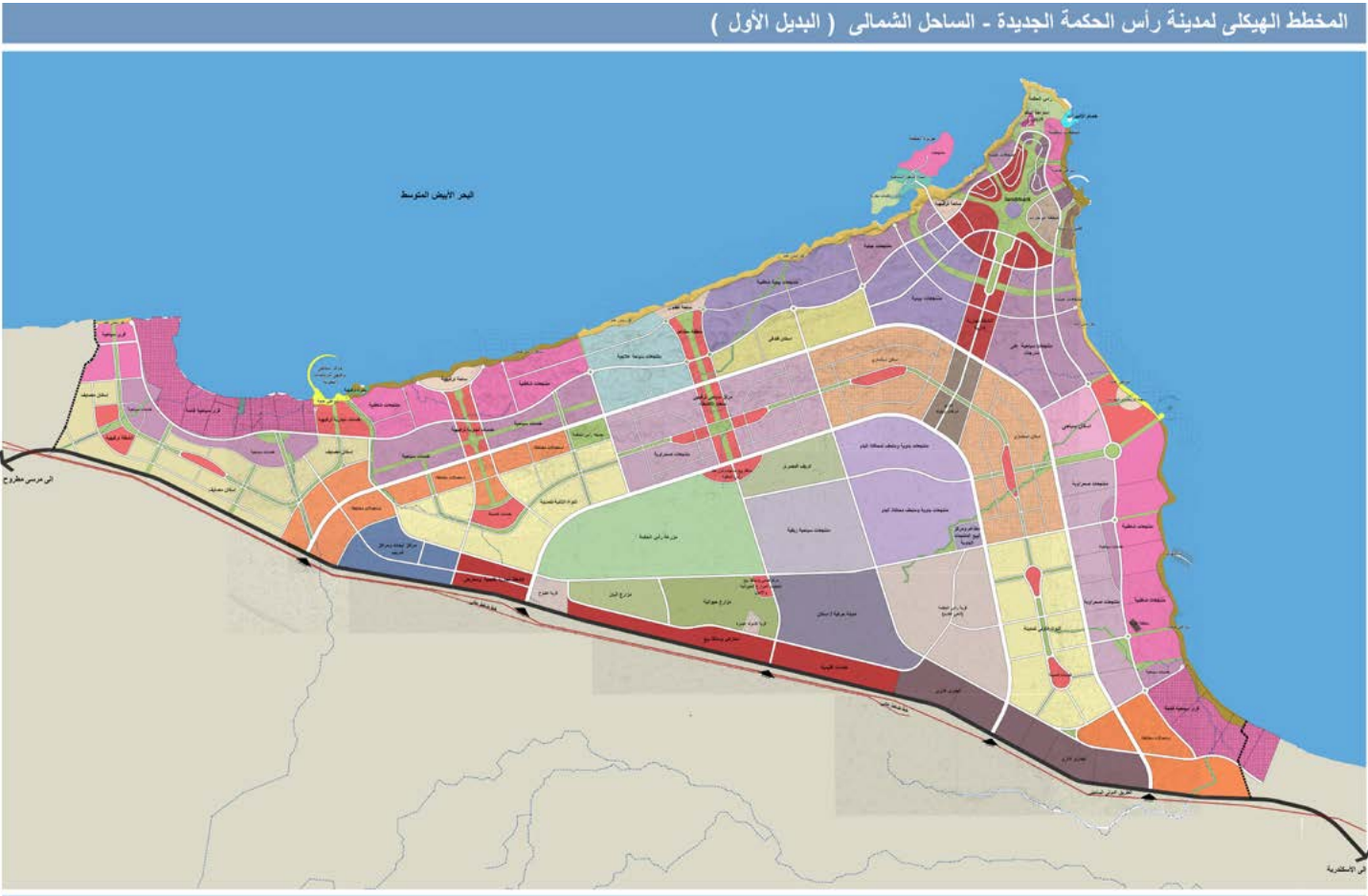
231 Million sq. m.

Project Description

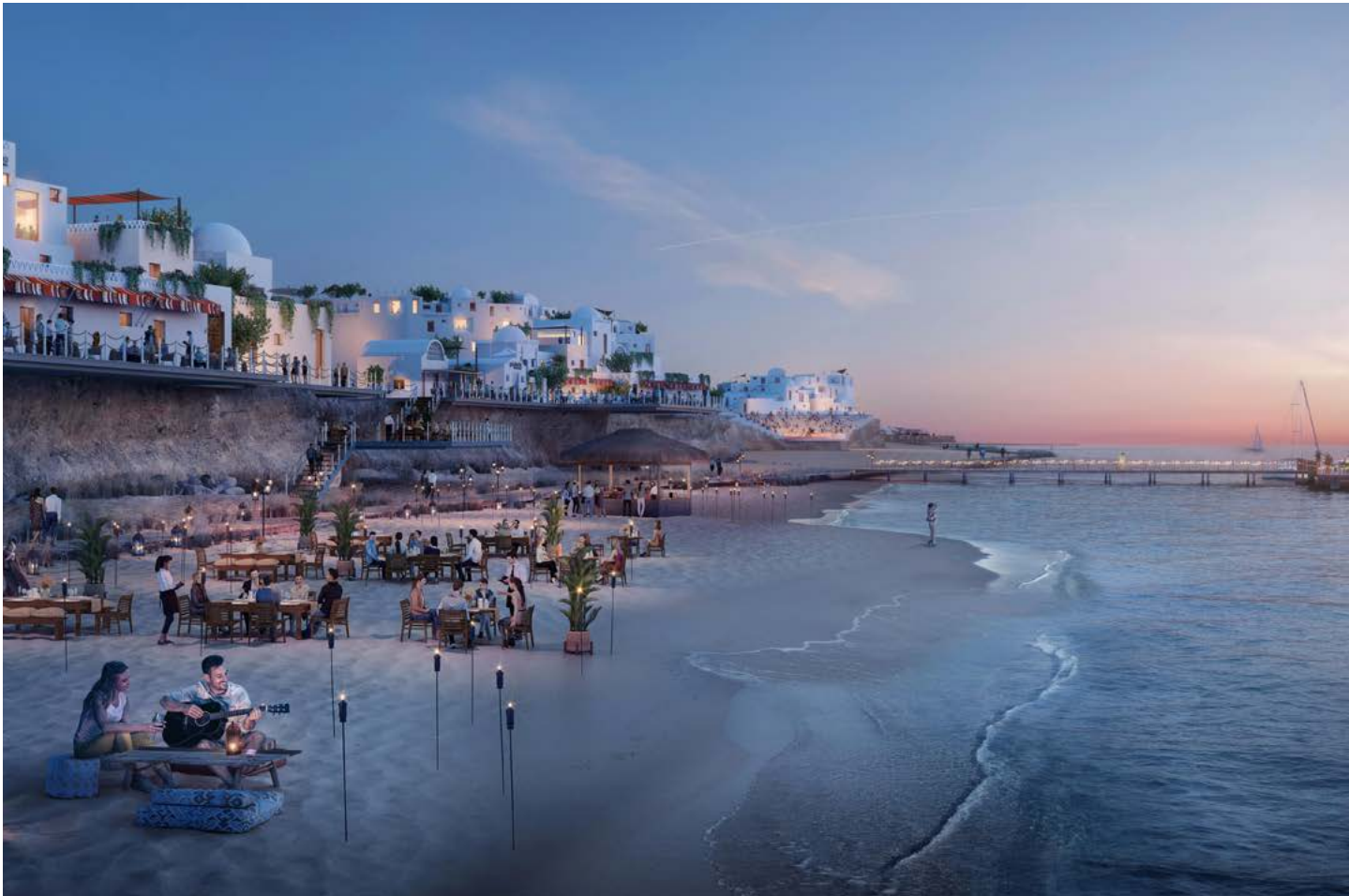
DSC in collaboration with CallisonRTKL were awarded the development of 57,100 Acres (55,000 Feddans) for Ras El Hekma City Waterfront. The plan is to develop Ras Al Hekamah to be one of the most attractive waterfronts on the Mediterranean coast competing with other similar cities. The city will be characterized by its unique environmental and Mediterranean characteristics to reflect in its unique ecological, cultural, urban and location. The project will adopt a new model for the planning and implementation of Ras Al Hekamah Tourism City through the application of international urban design methods to ensure efficient use of natural resources, economic diversification and economic sustainability.

Project Scope

- Sustainable Development Strategy
 - Environmental Studies
 - Infrastructure Studies
 - Tourism Studies
 - Local Economy Studies
 - Sustainable Economic Studies
 - Land Use and Road Network
- Development Principals
 - 2 Pre-concept Design Options
 - Develop final concept Design Option









Abu Mureikhah Master Plan

UAE

Aldar Properties

Land Area

2,860 sq. m.

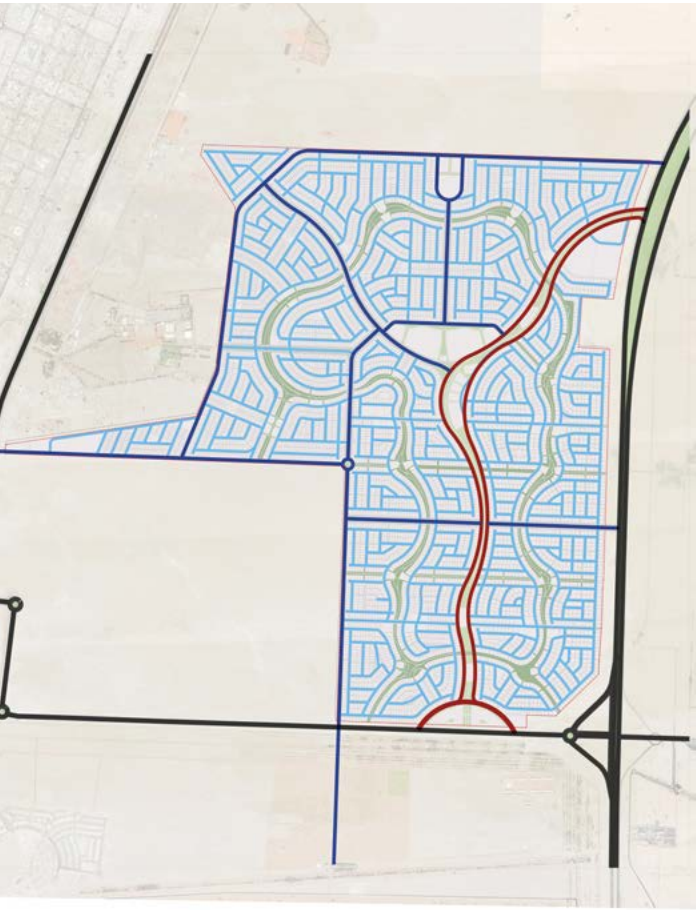
Project Description

Aldar Properties has a Residential development with a land area around 2860 Feddan in Abu Dhabi to offer 6,700 Villas along with Community facilities, public realm and service amenities



Project Scope

- Master Plan
- Pre-Concept Master Plan



Al Haffar Vission Masterplan

UAE

Aldar Properties

Land Area

10,935 sq. m.

Project Description

Aldar Properties has a new national housing development with a land area around 10,935 square meters in Abu Dhabi to offer 4,000 Residential Plots along with Community facilities, public realm and service amenities



Project Scope

- Master Plan
- Pre-Concept Master Plan



Al Derayia Development

Al Derayia, KSA

Public Pension Agency

Total Land Area

3,200,000 sq. m.

Project Description

Distance Studio has developed the Master Planning for a land area around 3,200,000 square meters to be a mixed-use development that consists of Multi-families Residential Area, Single Family Residential Areas, Mixed-Use District, Administration, Recreational and Community Services and Facilities.

Scope of Services

- Urban planning
 - Infrastructure
 - Landscape
- Concept Design
 - Schematic Design
 - Detailed Design
 - Tender Documents

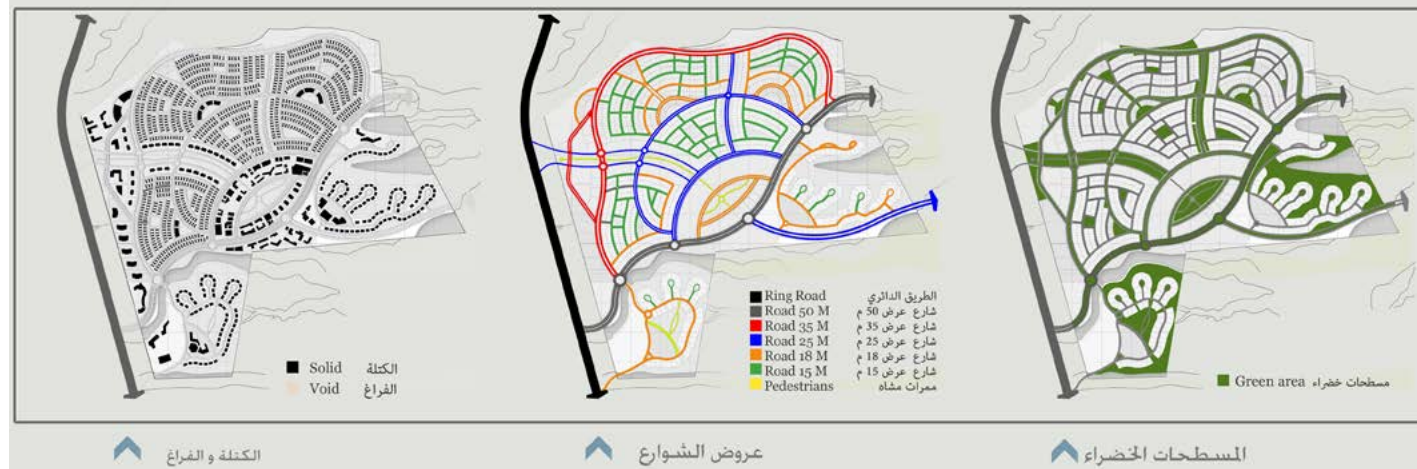


Alt 01 - Master plan analysis

Orchard Valley

البديل الأول - دراسات تحليل الموقع
روضة الوادي

دراسات تحليل الموقع | Master plan analysis

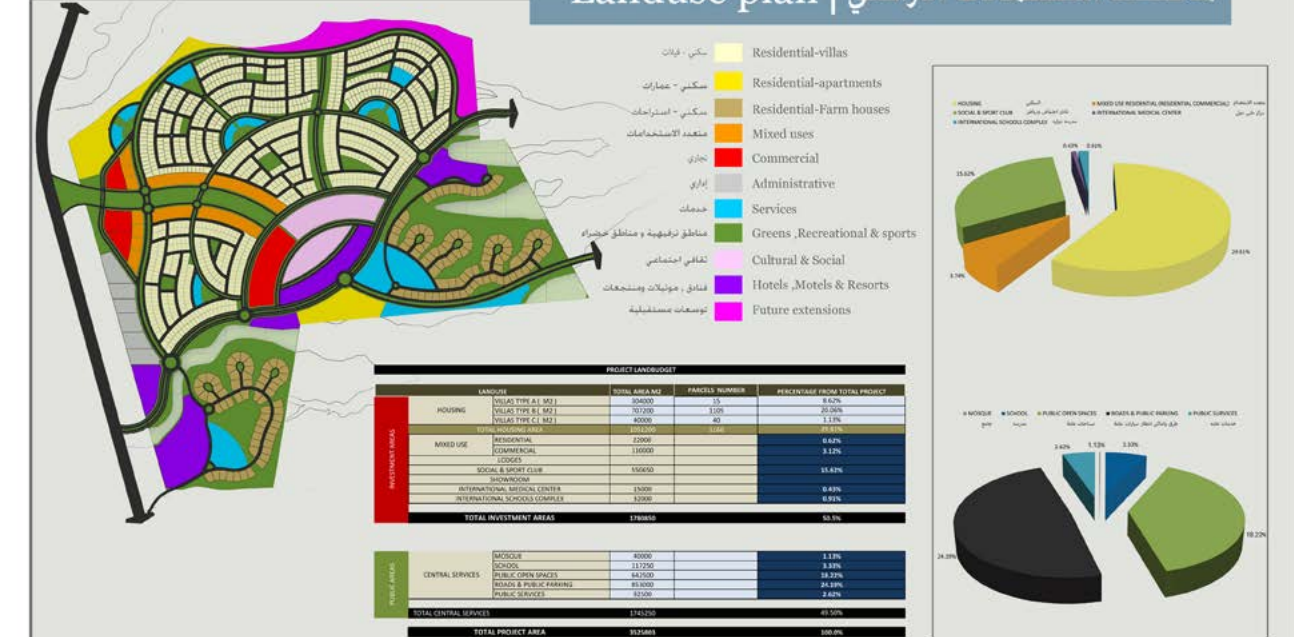


Alt 01 - Landuse study

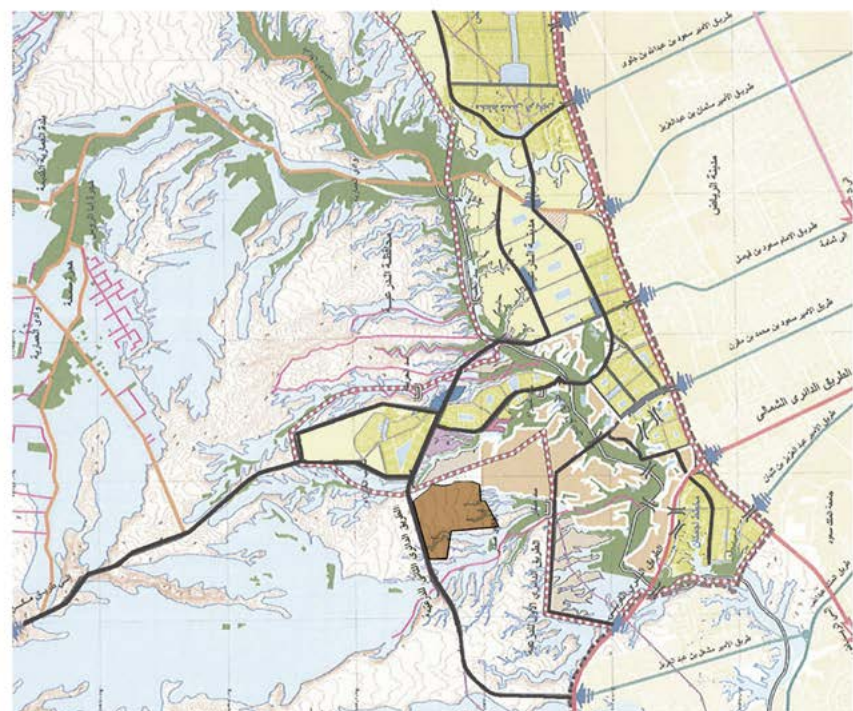
Orchard Valley

البديل الأول - مخطط استعمالات الأراضي
روضة الوادي

مخطط استعمالات الأراضي | Landuse plan



The Project site of strategic plan of Derayah | موقع المشروع من المخطط الارشادي للدرعية



يقع المشروع على هضبة مطلة على المناطق المحيطة للرياض وفي المنطقة المحصورة بين الطريقين الدائريين الاول والثاني للدرعية بحيث يقع غرب الاول وشرق الثاني .

Alt 01 - Mood board

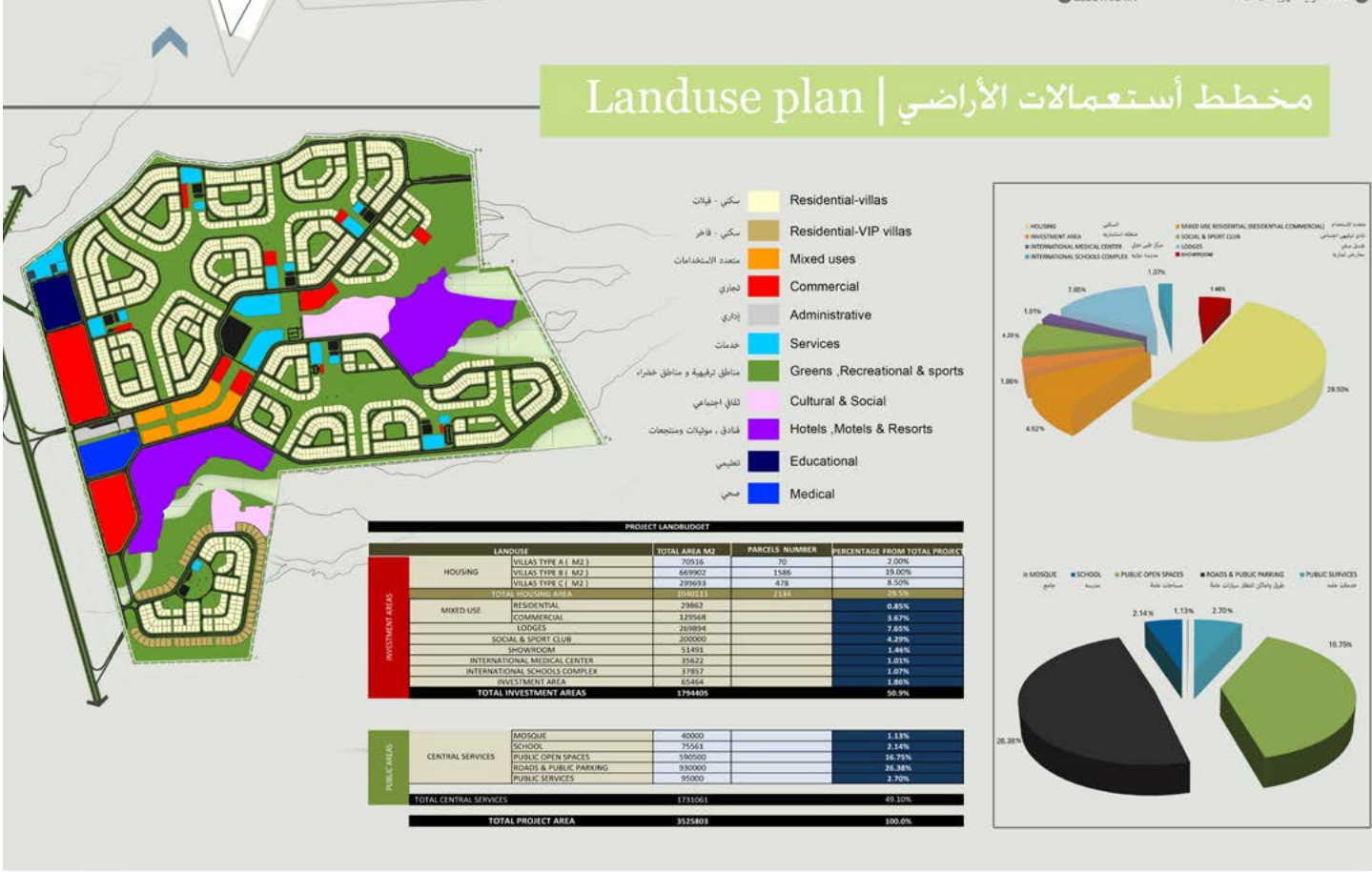
Orchard Valley

البديل الأول - الطابع المعماري
روضة الوادي

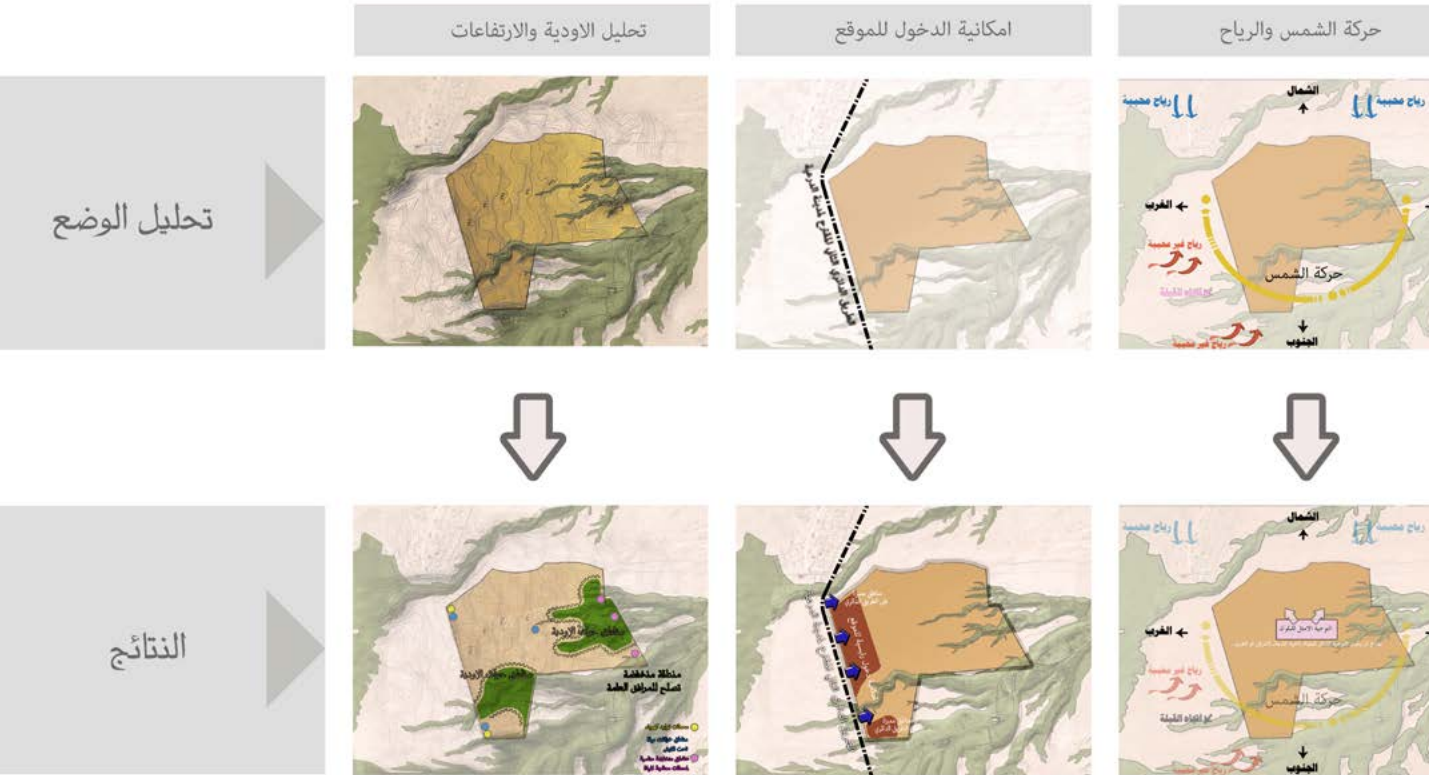
The Project charcter and stlye selection

الطابع المعماري للبدیل

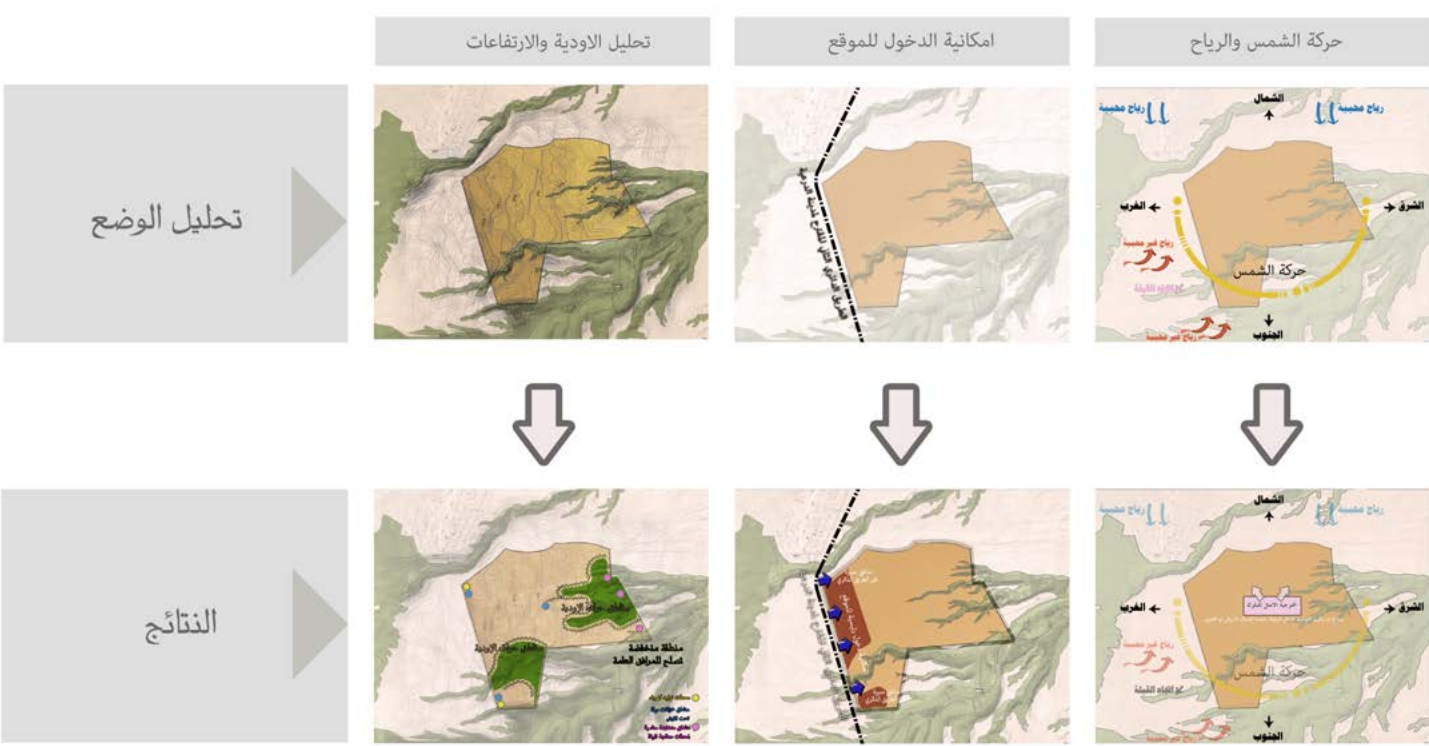




The analysis results and recommendations | نتائج وتوصيات تحليل الوضع الراهن



The analysis results and recommendations | نتائج وتوصيات تحليل الوضع الراهن



PHIA

Al Ain Al Sokhna, Egypt

Tatweer Misr

Total Land Area

72,000 sq. m.

Project Description

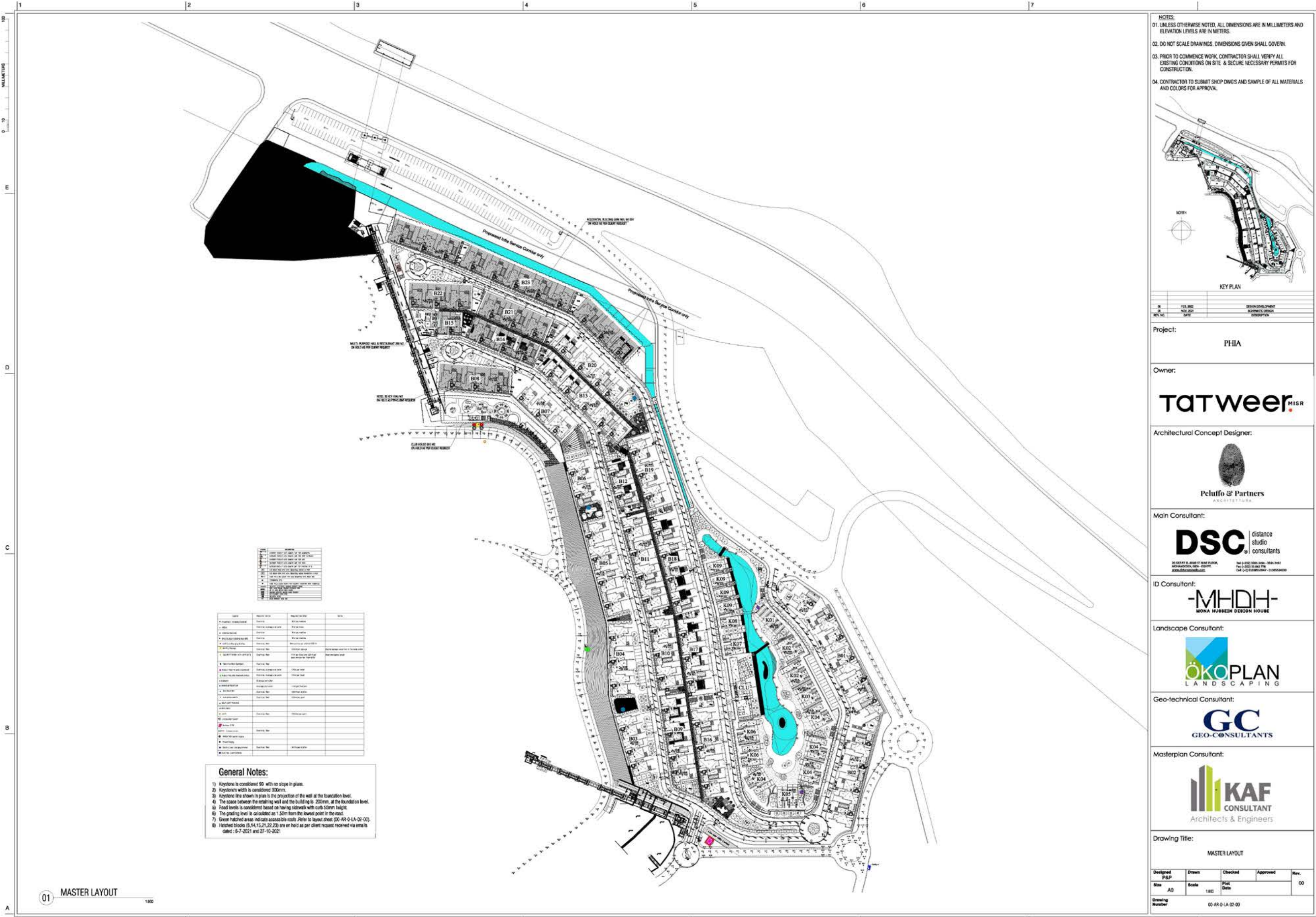
Tatweer Misr Group is holding a land of a total area 72,000 sq. m within the already existing compound IL MONTE GALALA “IMG” which is 2.5 million square meter in El Ein-El-Sokhna. The 2.5 million square mega development IMG is to be extended with a new phase under the name of “PHIA”. The project consists of the following components; Residential apartments that consists of two main components; Residential Buildings and Cabanas, Club House, Restaurant, Swimming Pool and Utility Buildings.



Project Scope

- Architecture
- Structure
- MEP
- Infrastructure
- Urban Planning
- Roads
- Concept Design
- Concept Design validation
- Schematic Design
- Permit Documents
- Detailed Design
- Tender Documents
- Tendering & Evaluation
- Construction Supervision





Maesta Serviced Apartments

Al Ain Al Sokhna, Egypt

Tatweer Misr

Total Built-up Area

30,500 sq. m.

Project Description

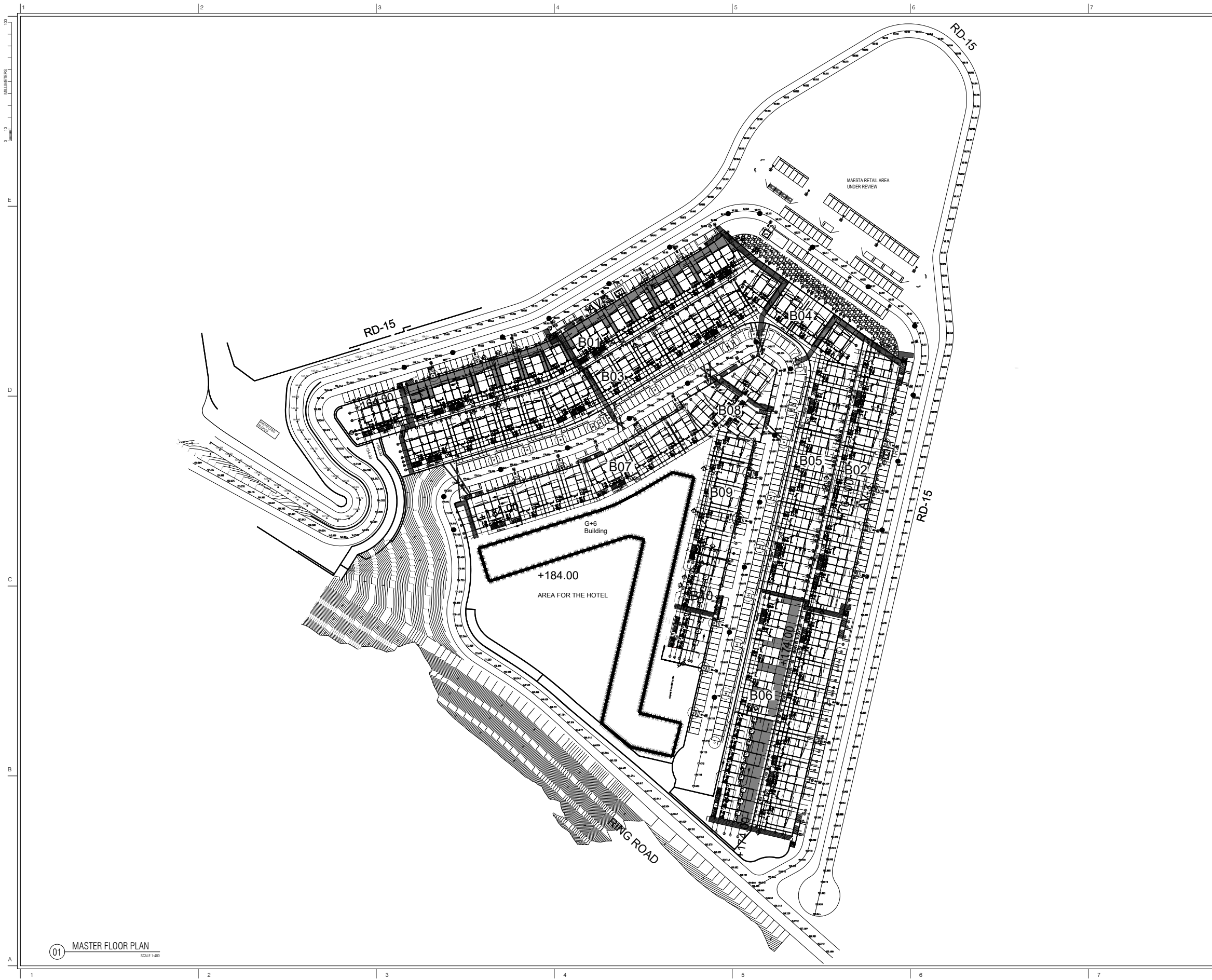
Maesta, is the highest plot in Il Mont Galala Resort in Al Ain Al Sokhna. DSC is the main Local Consultant for the Serviced Apartments in Maesta. It lies over three main plateaus of Serviced Apartments with 6 main Residential Typologies. The project has a foot print area around 11,000 square meters and Total Built up area around 30,500 square meters. The Residential Buildings consists of G+2 Floors.



Project Scope

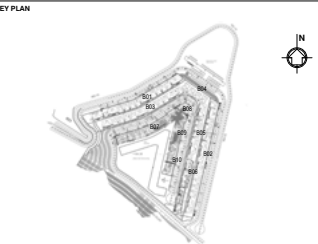
- Architecture
- Structure
- MEP
- IT & Security
- Infrastructure
- Concept Design
- Schematic Design
- Permit Documents
- Design Development
- Tender Documents
- Tendering Support
- Construction Supervision





01 MASTER FLOOR PLAN
SCALE 1:400

- GENERAL NOTES:
- 1- Unless otherwise noted, all dimensions are in millimeters and levels are in meters.
 - 2- Do not scale drawings, dimensions given shall govern.
 - 3- Prior to commence work, contractor shall verify all existing conditions on site & secure necessary permits for construction.
 - 4- Contractor to submit shop dwg.s and sample of all materials and colors for approval.
 - 5- Limits of gardens between types refer to landscape drawings.
 - 6- All drawings at all disciplines should be read in conjunction with specifications.
 - 7- The architecture drawings must be read in combination with other engineering drawings.
 - 8- All dimension must be verified by the contractor before preparation of shop drawings.
 - 9- Pipe cover detail in keystone for infra is repeated in site according to plumbing drawings.



01	September 2023	ISSUED FOR TENDER
02	June 2023	ISSUED FOR DESIGN DEVELOPMENT DOCUMENTATION
03	May 2023	ISSUED FOR LOCAL DEVELOPMENT TENDER DOCUMENTS
04	April 2023	ISSUED FOR SCHEMATIC
05	April 2023	ISSUED FOR SCHEMATIC
06	April 2023	ISSUED FOR SCHEMATIC

Project:
MAESTA SERVICED APARTMENTS

Owner:
Tatweer MISR

Architectural Concept Designer:

Peluffo & Partners
ARCHITETTURA

Main Consultant:
DSC distance studio consultants
26 GIZERT EL ARAB ST NINE FLOOR, MARIUT, EL DOKKI, CAIRO 11561, EGYPT
www.distancestudio.com
Tel: (+202) 3325 2454 - 3325 2452
Fax: (+202) 33 982 778
Cell: (+20) 01008535947 - 01005249350

ID Consultant:
MHDH
MONA HU BEIN DE TON HOU E

Landscape Consultant:
ÖKOPLAN
ENGINEERING CONSULTATIONS

Geo-technical Consultant:
GC
GEO-CONSULTANTS

Masterplan Consultant:
KAF
CONSULTANT
Architects & Engineers

Drawing Title:
Master Floor Plan

Designed P&P	Drawn A.D.	Checked O.A.	Approved H.G.	Rev. 00
Size A0	Scale 1:400	Plot Date SEPTEMBER 2023		
Drawing Number GN-AR-1-00-04-01				

Marina Al Alamain

Egypt

SECON

Land Area

171.6 Feddan

Project Description

DSC is working with The New Urban Communities to update the urban design of Marina El Alamein Center with an area of 3,952 acres, with the addition of southern extension area of 2,708 acres. The site has distinct characteristics as it is considered the gateway to the northwest coast and it is linked to a group of main traffic axes such as the international coastal road, Wadi El-Natron - El Alamein road, and is bordered from the south by the Alexandria-Matrouh railway, which increases the site's connectivity with the assemblies of the North West Coast Region.

Project Scope

- Regional studies
 - Economic studies
 - Environmental studies
 - Population studies
 - Infrastructure Studies
 - Urban Planning
 - Ministry Degree
- Pre-Concept Design
 - Concept Design & Master Planning



171.6 Feddan

The redevelopment of Marina Alamain shall be over several phases and the Master Planning Design of the archaeological area shall be considered as Phase One of this mega project. The Archaeological area is over 171.6 Feddan (720,000 square meters) to be developed into a Touristic Residential Archaeological area. The project shall consist of Cornich, Residential Units, Hospitality Buildings, Commercial and Entertainment components.

- Master Plan
- Urban Planning
- Architecture
- Structure
- MEP
- Infrastructure
- Landscape
- Concept Design
- Schematic Design
- Detailed Design
- Tender Documents
- Permit

[illegible]



Sports Complex

UAE

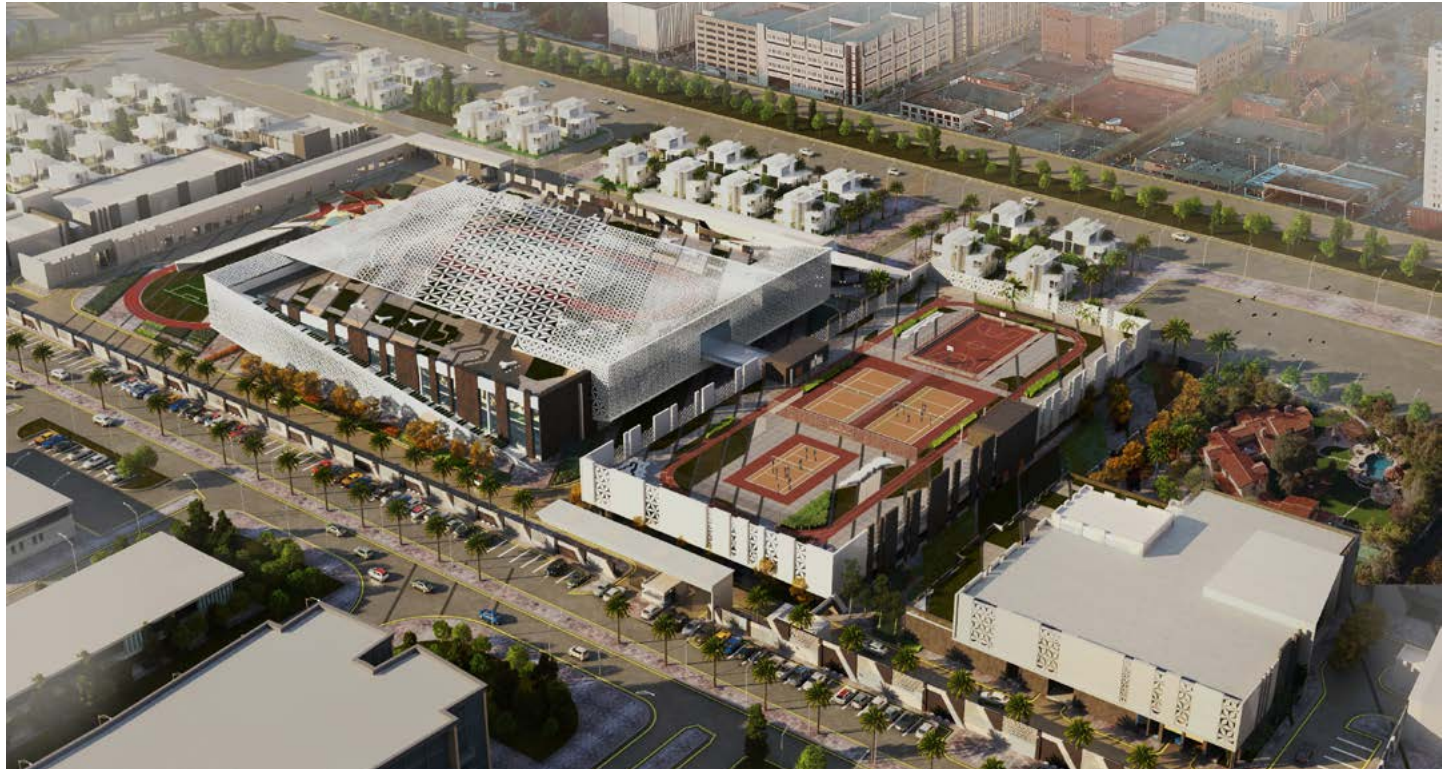
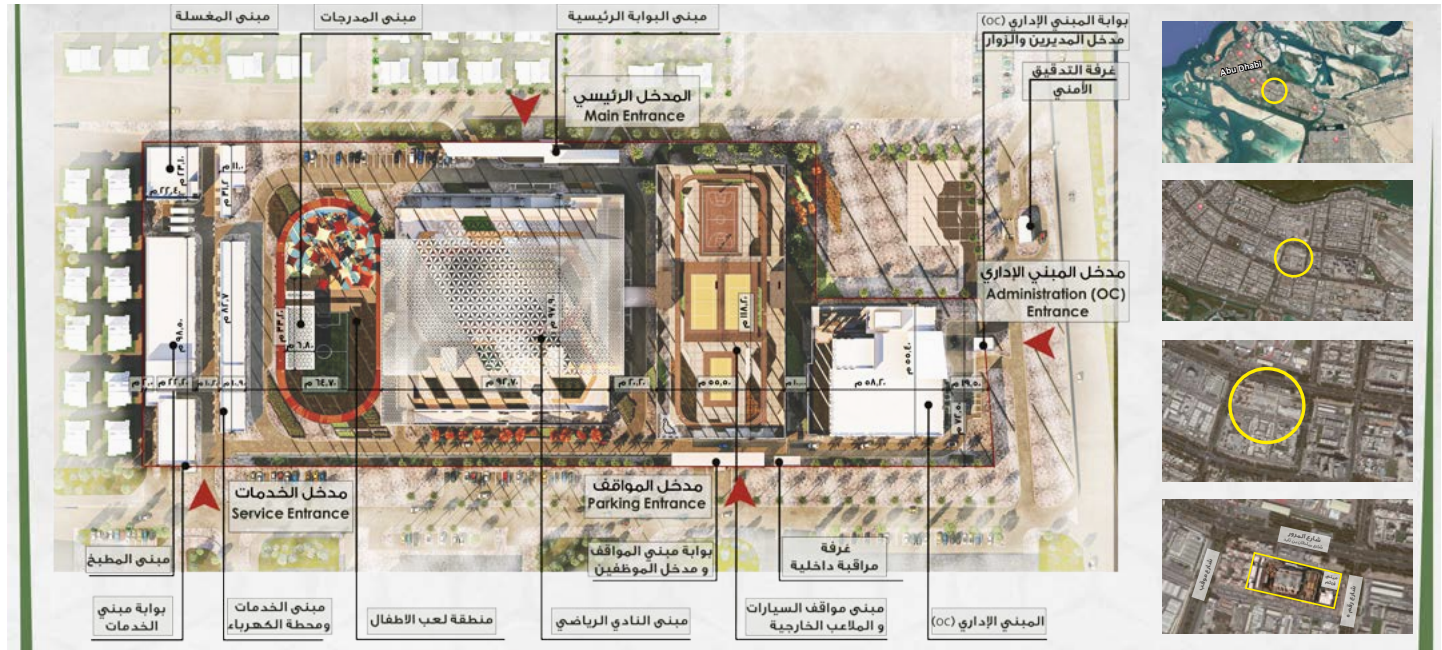
Confidential

Total Built-up Area

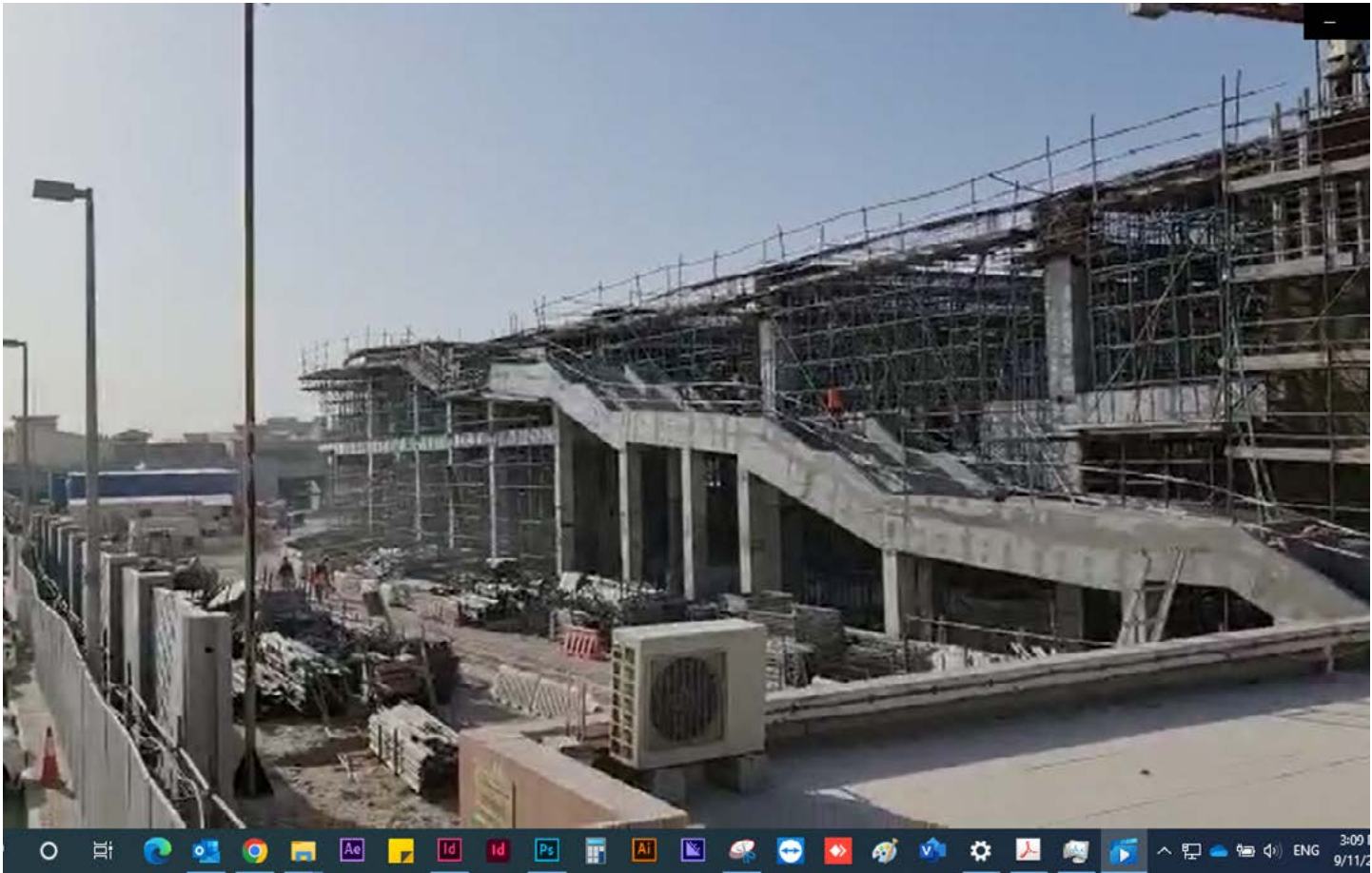
46,193 sq. m.

Project Description

A sports complex is developed over a land area around 50,935 square meters with a total built-up area around 46,193 square meters to include various sports fields, Swimming Pool, Kitchen & Laundry, Running, Track, etc.







Administrative Complex

UAE

Confidential

Total Built-up Area

271,952 s sq. m.

Project Description

The project lies over a land area around 271,952 square meters and total built-up area around 136,840 square meters, the project consists of Main Gate Building, Administrative Building, Data Center, Secondary Gate Building, Utilities Building and Multi-story Car Parking.







MAAD Mixed-Use Development

Mecca, KSA

MAAD Development Company

Total Built-Up Area

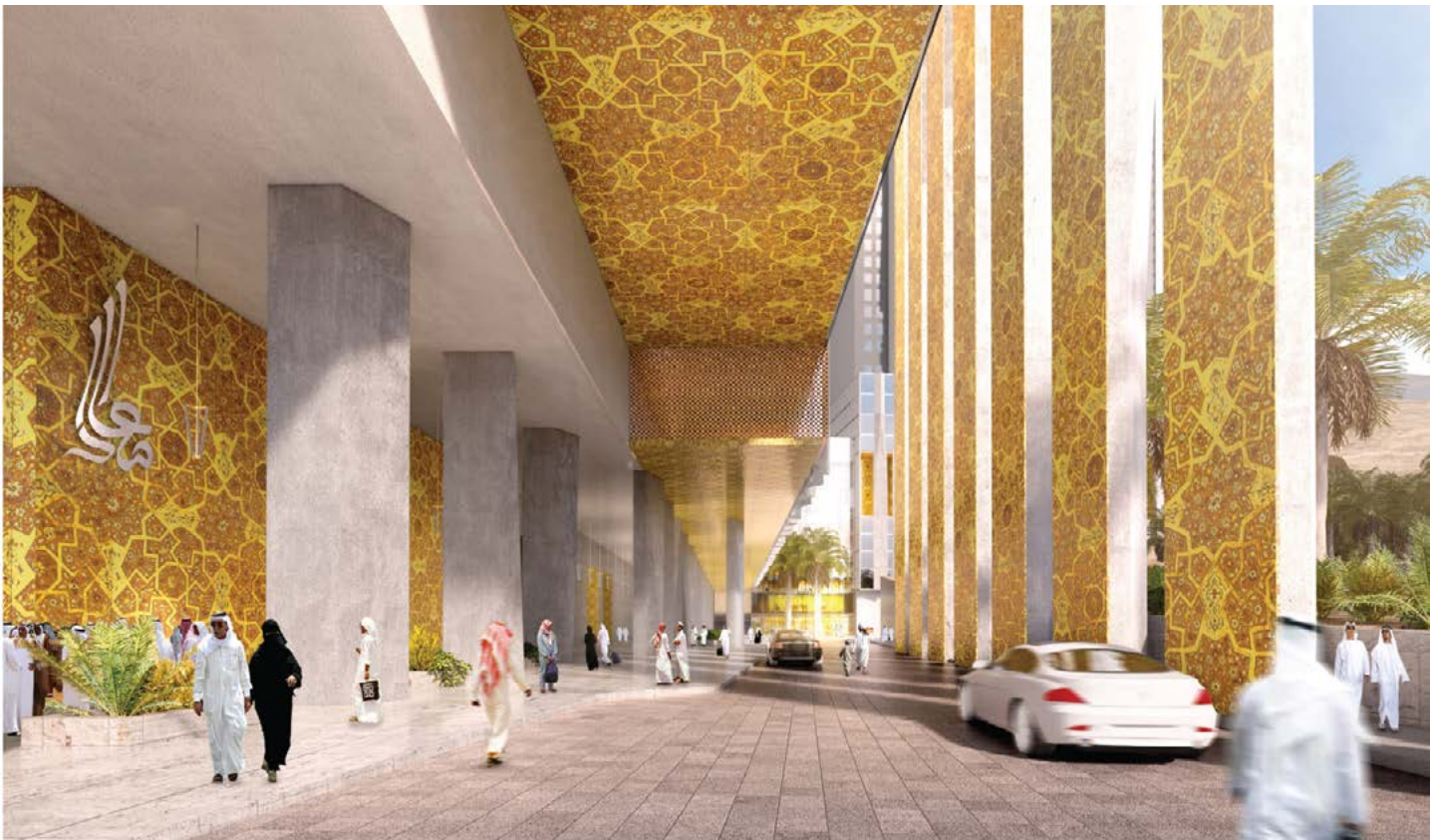
800,000 sq. m.

Project Description

The Project Site is Located Makkah Al Mokarama, Kingdoms of Saudi Arabia in a Land Size of 48,260 square meters. The proposed mixed-use towers included in the design project is envisioned as a unique and state of the art landmark with a total built-up area of 800,000m sqm and 11,400 hotel rooms. The designed complex three & four and five – stars luxurious hotels have 24towers and all amenities of three & four and five – stars.

Project Scope

- Architecture
 - Structure
 - MEP
 - Interior Design
 - Landscape
- Concept Design
 - Schematic Design
 - Detailed Design
 - Tender Documents







Silcon Gates Complex

Abu Dhabi, UAE

Abdel Rahman Al Attar & AL Derea Real Estate

Total Units

836 units

Project Description

Located of the corner of Emirates Road and Al Ain Road, DSC incorporation with Hadi Consulting Engineering in Cairo has delivered Silcon Gates Residential Complex which is minutes away from hustle and bustle of city life, making Silcon Gates an condemnable home. The Silcon Gates Complex comprises 836 spacious apartments offering Studios, One, Two and Three Bedroom apartments. Silcon Gates blend modern architecture with sense of traditional Arabic style

Project Scope

- Architecture
 - Structure
 - MEP
- Concept Design
 - Schematic Design
 - Detailed Design
 - Tender Documents
 - Tendering & Evaluation
 - Construction Supervision





CFC Creative District

New Cairo, Egypt

Al-Futtaim Group Real Estate LLC

Total Land Area

38,545 sq. m.

Project Description

Al Futtaim are developing 2 land areas over two stages with a land area around 35,690 square meters and total built-up area around 38,545 excluding any basements for Ground and 5 Floors for Stage 1. As for Stage 2, it shall be built over a land area around 30,596 square meters and has a total built-up area around 35,861 square meters over ground and 5 floors.

Project Scope

- Architecture
 - Structure
 - MEP
 - Infrastructure
 - Landscape
 - Interior Design
- Concept Design validation
 - Schematic Design
 - Permit Documents
 - Detailed Design
 - Tender Documents
 - Tender Actions
 - Issue for Construction
 - Construction Supervision



Bleu Vert Compound

New Administrative Capital, Egypt

SECON

Land Area

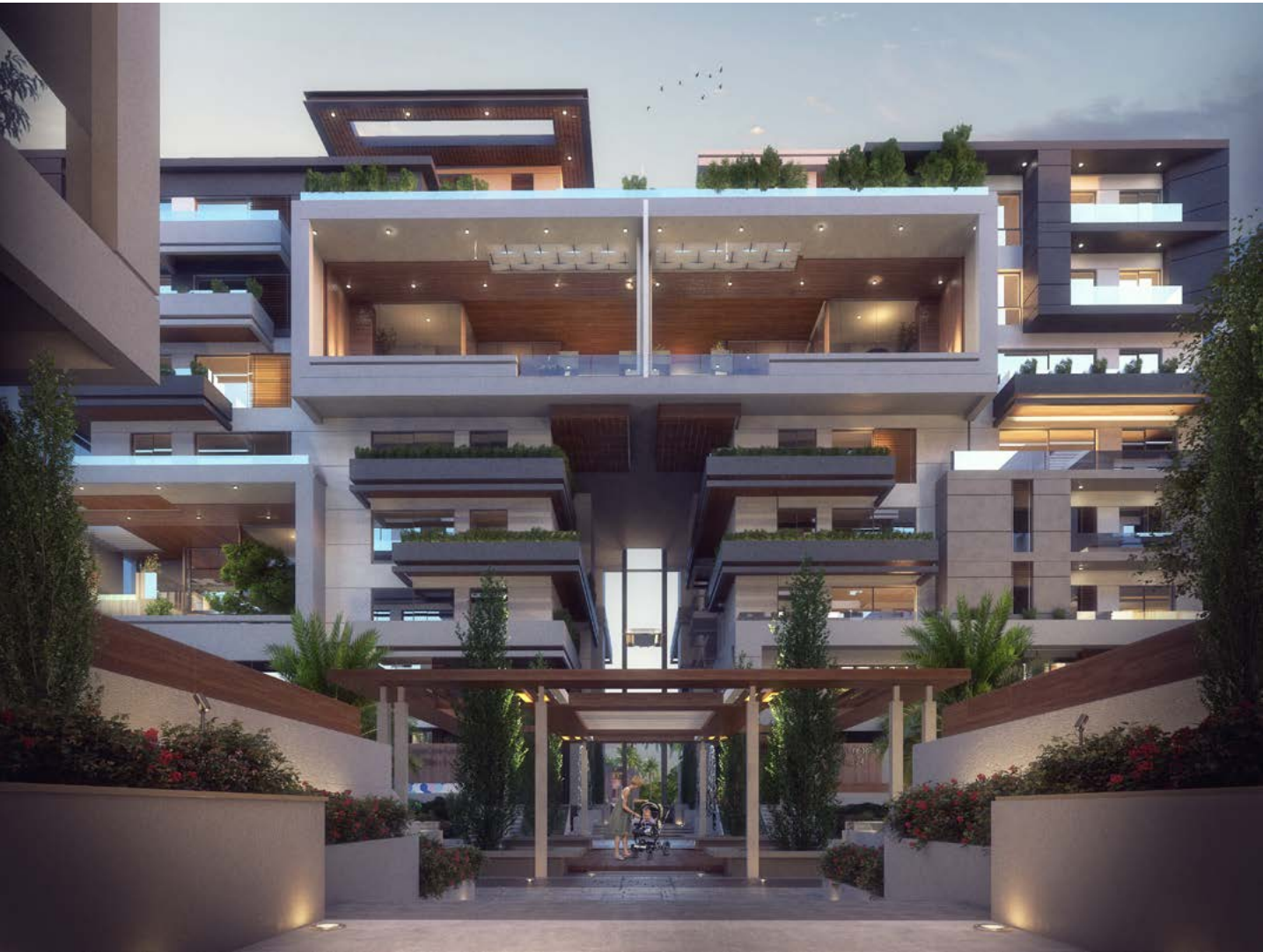
249,000 sq. m.

Project Description

SECON owns a land located in Administrative Capital, Egypt with approximately land area of 249,000 sq.m. The compound shall consists of Residential Buildings and Commercial/Administrative Buildings. The project will consist of about 2,800 apartment with five (5) fully finished different type.

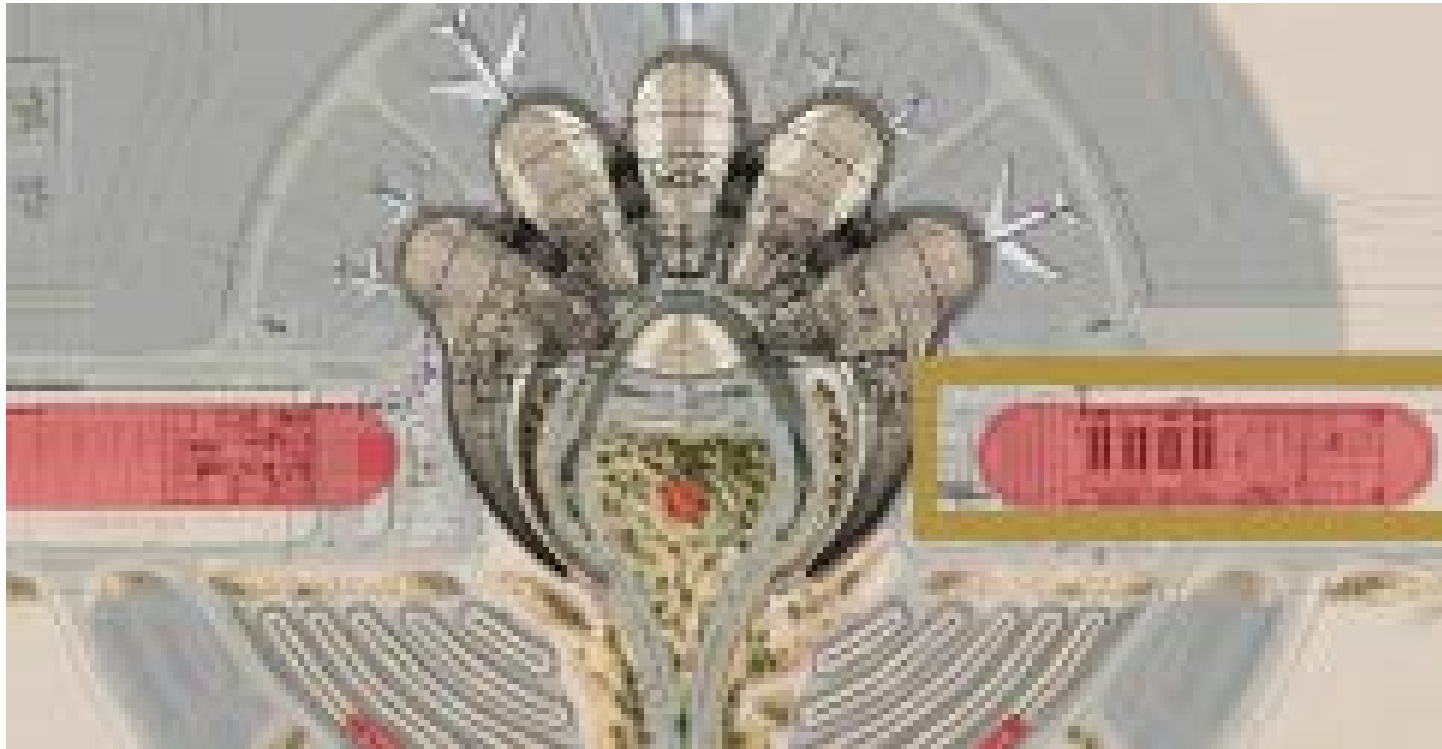
Project Scope

- Urban planning
 - Infrastructure
 - Landscape
 - Architecture
 - Structure
 - MEP
- Concept Design
 - Schematic Design
 - Detailed Design
 - Tender Documents
 - Tendering & Evaluation





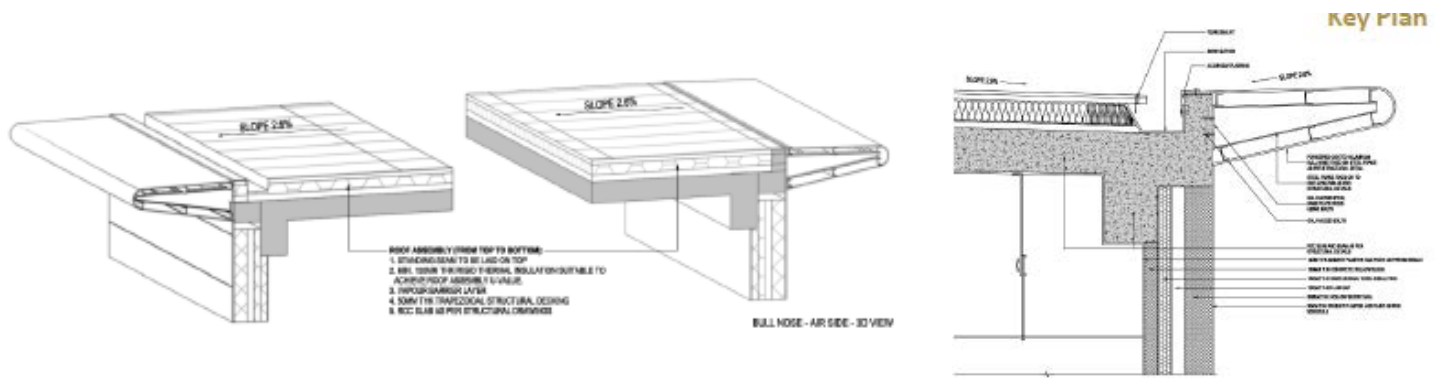


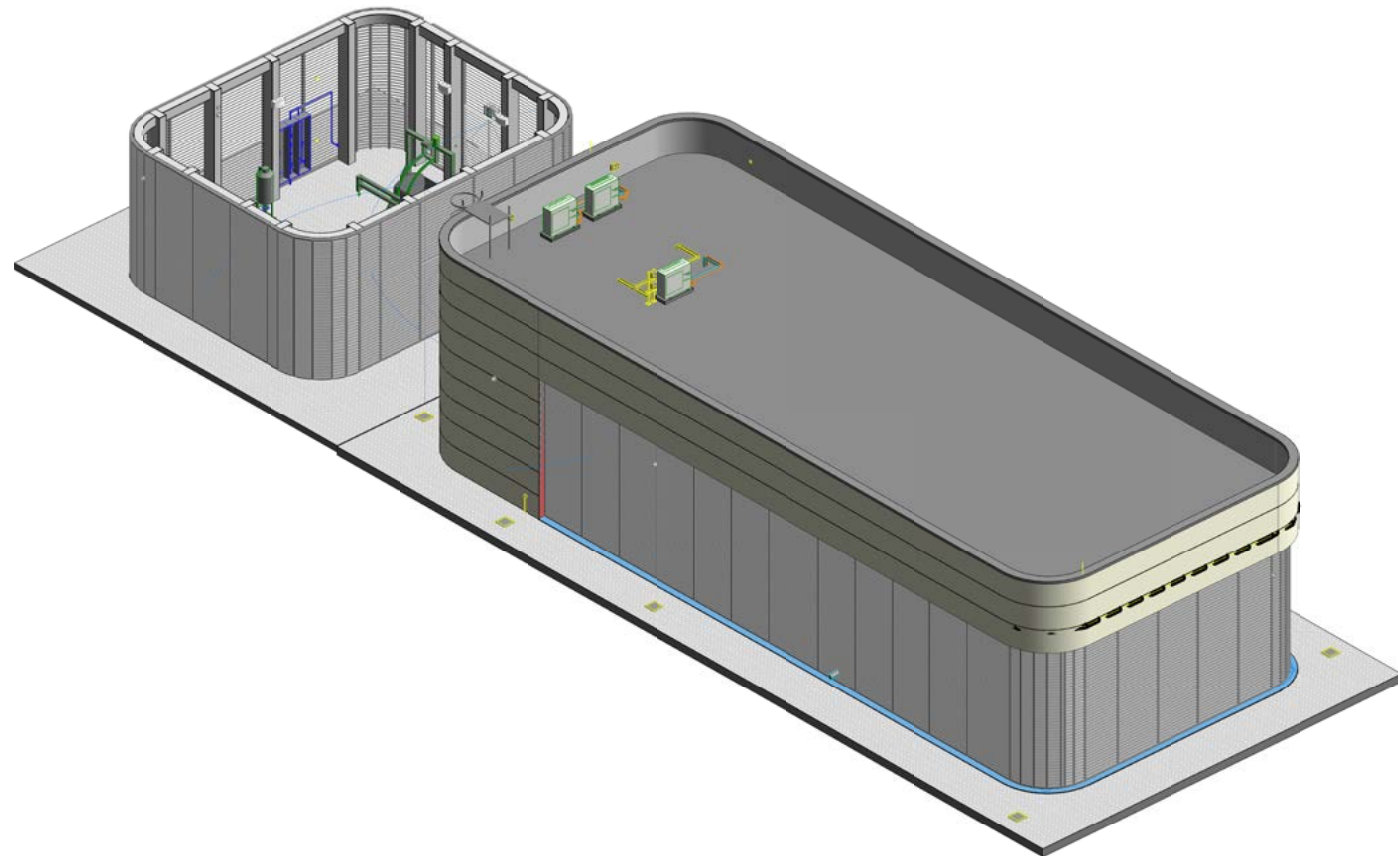
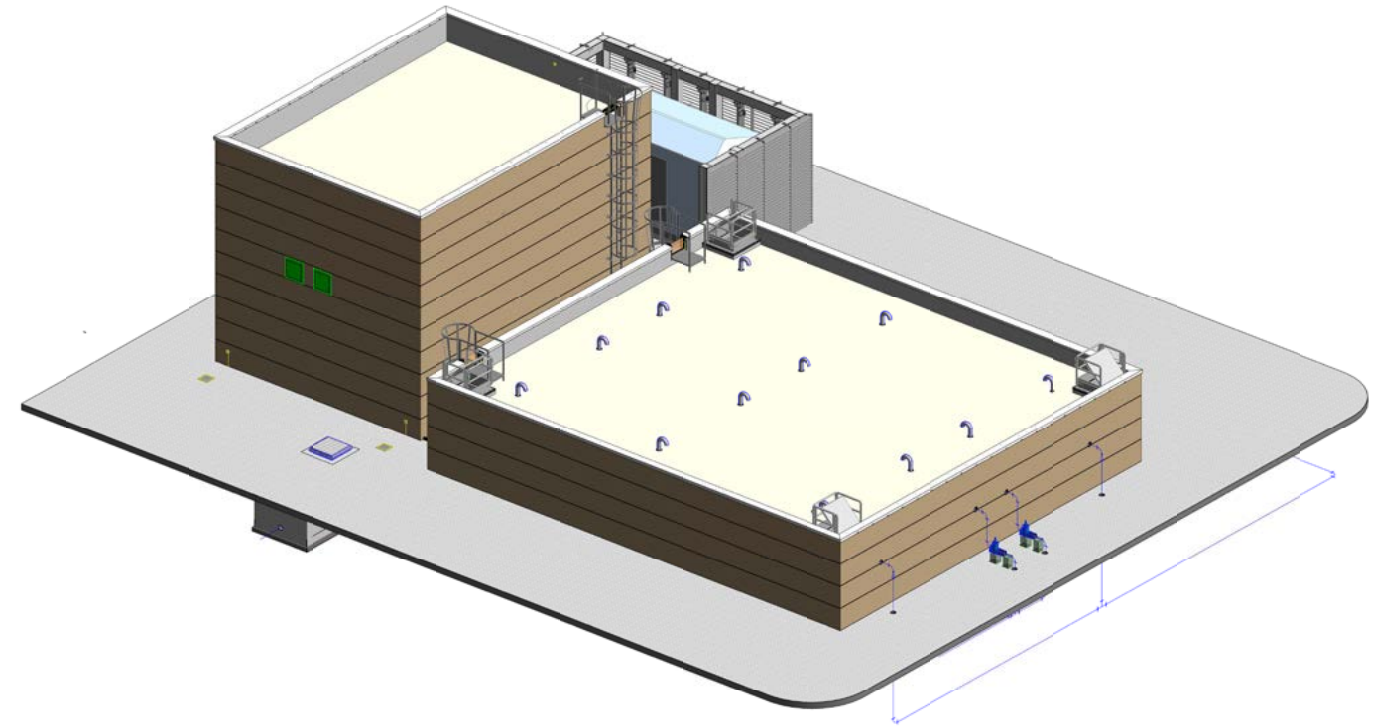
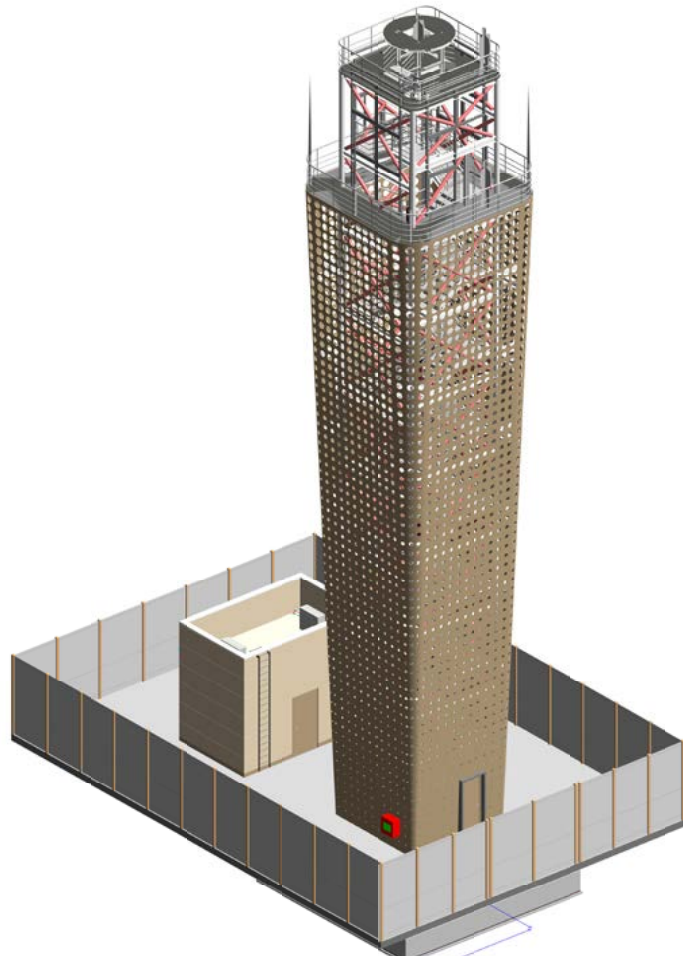


Project Description

The Red Sea International Airport is an international airport under construction in Hanak, Tabuk in northwestern Saudi Arabia, it is expected to be completed in 2023 and service one million passengers in 2030. The airport is part of a luxury and sustainable tourism mega project in development called The Red Sea Project. Our Scope of work will be approximately 2,900 shop Drawings. works shall go through the following stages:

- Shop Drawings (LOD 400)
- As-Built Drawings (OPTIONAL) (LOD 500)





Souq Muscat

Muscat, Sultanate of Oman

Confidential

Total Land Area

100,000 sq. m.

Project Description

Souq Musqat was designed to preserve this ancient and traditional architecture that is characterised by its simple lines, it avoids high rises, yet maintains an understand elegance of its own, the castles, forts and walls are a testament to anarchitectural style that has defence in mind, the most famous being jabreen castle and Bahla fort and walls (sur Bahla).

Project Scope

- Urban planning
- Architecture
- Concept Design



La Palma Residential Compound

Riyadh, KSA

Al-Habib Company

Total Land Area

Confidential

Project Description

La Palma Riyadh is a newly –constructed, secure and fully furnished 480 unit luxury residential community in a contemporary western accommodation, carefully designed from the ground – – up for the enjoyment and safety for future residents. La Palma Riyadh North compound will offer the western expatriate community of Riyadh, a variety of 5 luxurious and fully furnished housing options with rental rates to meet all budgets. A range of recreational amenities, services and restaurant, flat-screen televisions, gated

Project Scope

- Urban planning
- Infrastructure
- Landscape
- Architecture
- Structure
- MEP
- Concept Design
- Schematic Design
- Permit Documents
- Detailed Design
- Tender Documents
- Tendering & Evaluation
- Construction Supervision



Governmental Complex

Egypt New Urban Communities Authority

Total Built-up Area

Confidential

Project Description

The Ministry of Housing, Utilities and New Urban Communities seeks to develop a service complex for each governorate at the level of the Republic, where each complex brings together Governmental services that serve Egyptian citizens in each governorate to facilitate the services provided to them. Hence, 3 standardized models will be designed according to the areas allocated to the government agencies' complexes in the governorate. These models has total built-up areas around; the small model is for 38,640 square meters, the middle model is for 48,300 square meters and the large model is for 81,900 square meters.

Project Scope

- Master Planning including Site Studies
 - Architecture
 - Structure
 - MEP
 - Infrastructure
 - Landscape
 - Interior Design
- Concept Design
 - Schematic Design
 - Permit Documents
 - Design Development
 - Tender Documents

(Delta Theme)







Al Khobar Business Park

Al Khobar, KSA

MASIC

Total Built-up Area

130,000 sq. m.

Project Description

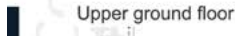
The project is located in the intersection of the King Saud Road from the west (138 m) and Pricne Salman Road from the North (118m), in one of the most luxurious district in Al Khobar City. The project is a mixed-use development that consist of Offices, Business Hotel “Swiss Hotel”, and Commercial Podium for Retail, Cafes and Restaurants. With plot area around 15,590 sqm with a total built up area more than 130,000 sq. m.



Project Scope

- Architecture
- Structure
- MEP
- Landscape
- Interior Design
- Concept Design
- Schematic Design
- Detailed Design
- Tender Documents





MIVIDA English School

New Cairo, Egypt

EMAAR Misr

Land Area

20,000 sq. m.

Project Description

EMAAR are developing the last English School in MIVIDA Compound, New Cairo over a land area around 20,000 square meters with a footprint area around 6,000 square meters. The School shall comprise 3 Main Buildings; One for the Kindergarten, second for Primary and the third for Mid and High School. Our scope of services includes reviewing the Concept Architecture Design done by the International Consultant then developing Architecture & Engineering disciplines till Tender Documents.

Project Scope

- Architecture
 - Structure
 - MEP
 - Landscape
- Concept Design Validation
 - Schematic Design
 - Detailed Design
 - Tender Documents



The Crescent, Mivida

Egypt

Emaar Misr

Land Area

Confidential

Project Description

Lined up in an inspirationally cozy crescent shape, The Crescent Parkside Residences are beautifully designed directly embracing the lush Central Park boasting incredible views of the park and Lake District. This sets it up to be the stage for a green, upbeat lifestyle.



Project Scope

- Architecture
- Structure
- MEP
- Concept Design
- Schematic Design
- Design Development
- Tender Documents



Avenues 7, Mivida

Egypt

Emaar Misr

Land Area

Confidential

Project Description

Drawing its name from tree-lined residential streets, Mivida's Avenues is a suburban dream come true. The neighbourhood streets where luxurious villas and townhouses lie are engulfed by lavish landscapes. Located in the heart of Mivida, Avenues is a true representation of extravagant green living, as the dew-topped grass of Mimi Valleys dazzle in the distance.



Project Scope

- Architecture
- Structure
- MEP
- Concept Design
- Schematic Design
- Design Development
- Tender Documents



Garden Twin Houses, Mivida

Egypt

Emaar Misr

Land Area

Confidential



Project Description

Mivida is stepping into the launch of its final phase of twin homes, Gardens Twinhomes. Gardens Twinhomes features a young and vibrant community, bordered by one of Mivida's iconic wadis and surrounded by beautifully landscaped gardens. Available in different types, these meticulously designed twin homes are marked by their unique Tuscan and Italian architectural style, ranging in areas from 340 sq. m. to 354 sq. m.

Project Scope

- Architecture
- Structure
- MEP
- Concept Design
- Schematic Design
- Design Development
- Tender Documents



Office Community

Egypt

Emaar Misr

Land Area

Confidential



Project Description

With a total built-up area around 135,000 square meters, the office community project offers 6 office buildings with a commercial podium for retail and food & beverages shops.



QIIB Headquarter

Qatar

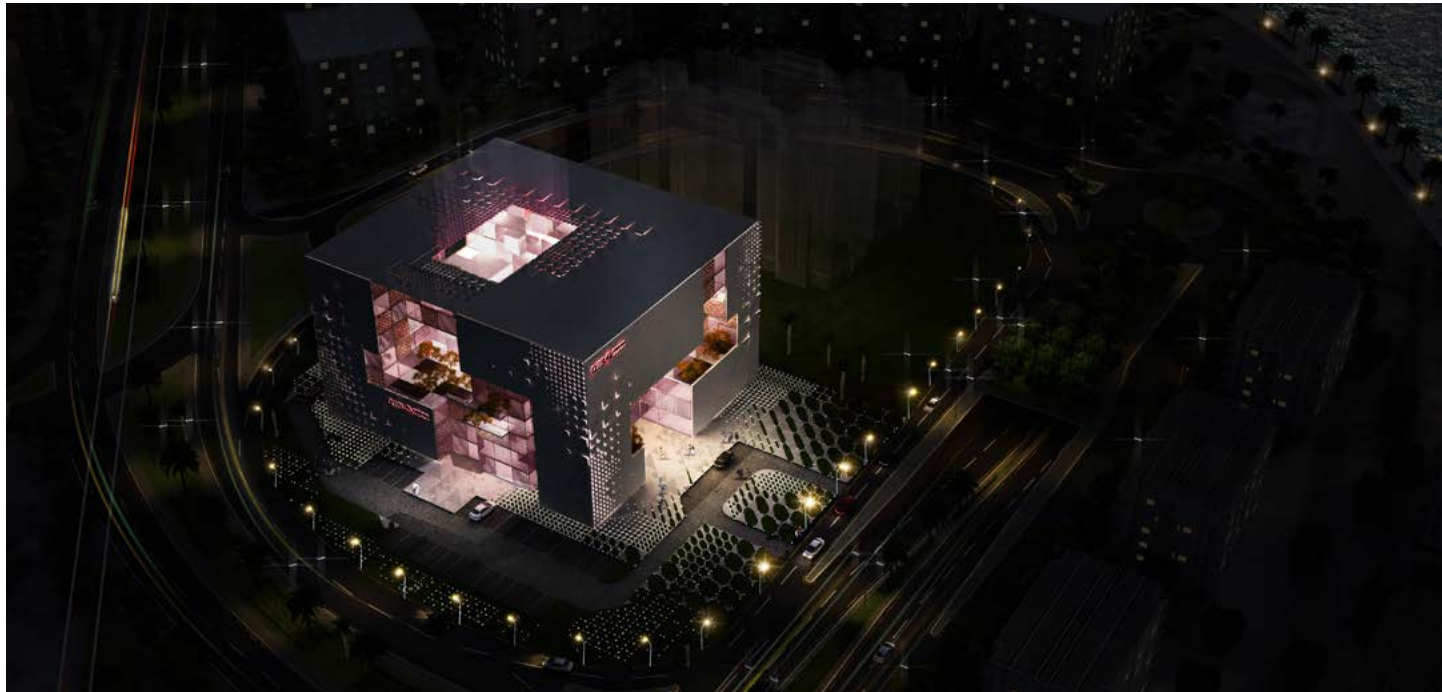
Qatar International Islamic Bank

Total Built-up Area

Confidential

Project Description

Qatar Islamic International Bank wanted to develop a new innovative headquarter showing the Bank's identity over a land area around 6,300 square meters. DSC team has revolved the project design around the bank's name. The team developed



their concept based on Cube Shape since it is considered as an icon for Muslims as well the bank colors reflected the Bank Logo colors as well as State of Qatar Flag colors. The atrium was inspired by the Economic Growth Rate.

Project Scope

- Architecture
- Concept Design



AIDana Residential Tower

Abu Dhabi, UAE

Confidential

Total Built-Up Area

11,000 sq. m.

Project Description

In Al Dana Area in Abu Dhabi, our client has requested a Residential Tower with a Retail zone in the Ground Level to serve the tower residences and its surroundings overlooking the Canal Front. The tower has a land area of 4,078 square meters with a Foot Print area of 2,039 square meters and maximum car parking area around 11,000 square meters. The building shall consist of 3 Basements, Ground Floor as a Retail and Reception for the Residential Part and 16 Residential Floors.

Project Scope

- Architecture
- Concept Design



Al Raha Residence Competition

Abu Dhabi, UAE

Confidential

Total Built-Up Area

23,363 sq. m.

Project Description

The building's site area is 4,672 sq. m. and it is a multi-serving project in attention to that it's not only residential but also commercial and recreational venture. The residential building consists of two basement floors, one ground floor, and seven floors; it provides three apartment prototypes, one bedroom units; two bedrooms; and three bedroom units. The total built-up area is 23,363 sq. m, whereas, the gross floor area and footprint are 12,000 sq. m. and 2,350 sq. m. respectively.

Project Scope

- Architecture
- Concept Design



Dubai Health Care Center

Dubai, UAE

Confidential

Total Built-up Area

30,000 sq. m.

Project Description

This modern Arabic Arab-styled office building is located in a prime location in Dubai Health Care City. It is equipped with smart systems and consists of three Basements for parking, a ground Floor, 7 typical floors, and health Club. The building's side street orientation provides physical and visual access to pedestrian activity on both the major and minor pedestrian corridors.

Project Scope

- Architecture
 - Structure
 - MEP
- Concept Design
 - Schematic Design
 - Detailed Design
 - Tender Documents
 - Tendering & Evaluation
 - Construction Supervision



Tristar Residential Building

UAE

Confidential

Total Built-Up Area

Confidential

Project Description

Three Residential Buildings sharing a Commercial Plaza. Each building has a Ground Commercial Floor and 9 Residential Floors

Project Scope

- Architecture
- Structure
- MEP
- Concept Design



Future Tower

Al Khobar, KSA

Khalid El Fawzan

Total Size

30,000 sq. m.

Project Description

Future Tower is designed to be both pleasing to the eyes of high speed travelers on Dammam-Khobar highway with its smooth, minimal lines and curves, and to meet the aesthetic and functional needs of its users. As a high rise office building, the tower offers social spaces including food and beverage service areas to make the work place more enjoyable.

Project Scope

- Urban Planning
- Architecture
- Structure
- MEP
- Interior Design
- Concept Design
- Schematic Design
- Detailed Design
- Tender Documents
- Tendering & Evaluation
- Construction Supervision



Shura Island -Golf Estate

KSA

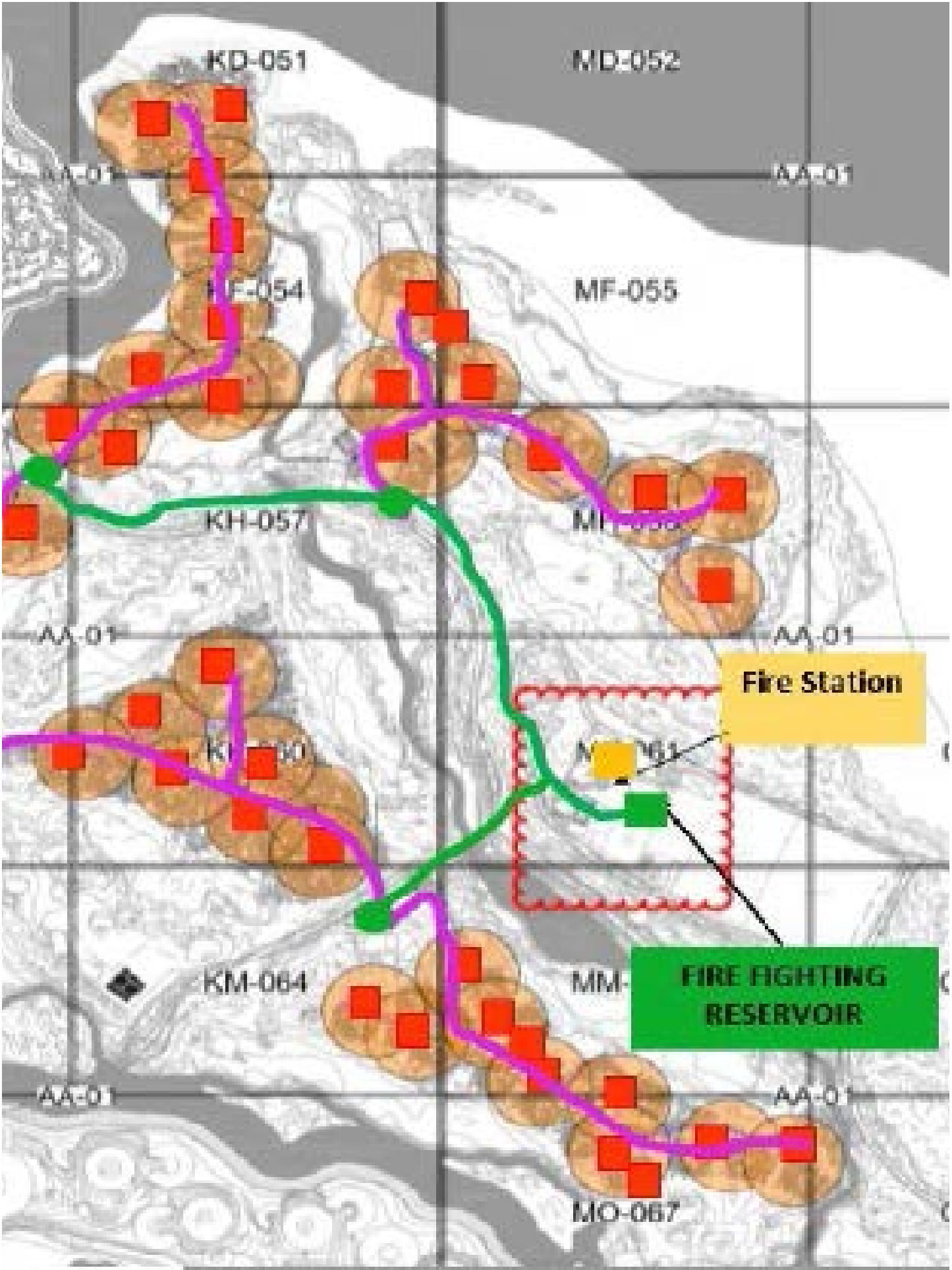
Gulf Distance Association

Total Land Area

Confidential

Project Description

- Shura is the hub island of The Red Sea Project on the west coast of Saudi Arabia. With an aturaldolphin shape,the island is one of 92 in our archipelago,which is home to the world's fourth largest barrier reef system,untouched corals and a significant number of endangered species.
- 11 unique resorts on Shura designed to give future guests abare foot luxury experience like no other place on earth.



DAGA Infrastructure - Area B

Aldiraya, KSA

Assystem Radicon

Total Land Area

Confidential

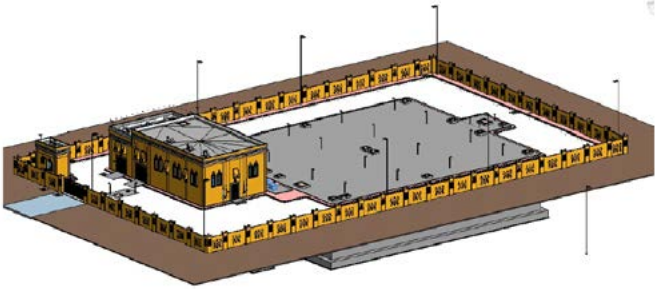
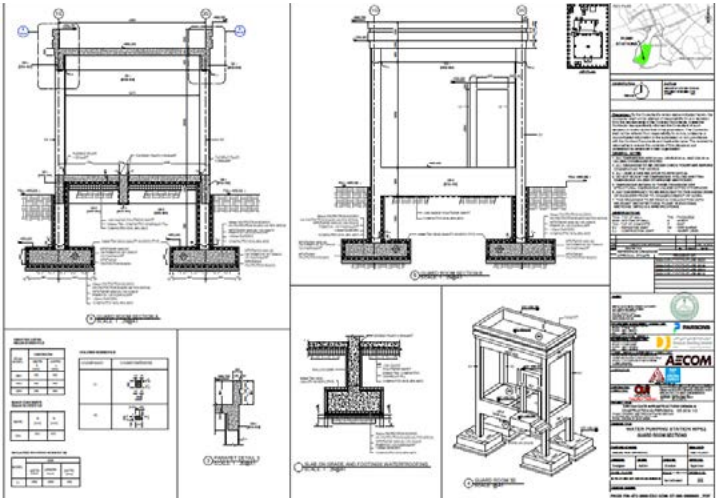
Project Description

Assystem Radicon is finalizing a contract to perform engineering service in DGDA iconic project which is part of Saudi Development ambitious 2030 vision in Riyadh, Saudi Arabia. The project comprises Infrastructure utilities and Tunnel spines.



Project Scope

- Infrastructure
- Architecture
- Structure
- MEP
- Shopdrawing
- as built



4.1 Model References:
Architecture Model: DG004-DOR-UT-IRR-BM-SD-ARB-000166
Structural Model: DG-PIN-472-0000-DOR-DDE-IR-A00-0000002-03
MEP Model: DG-PIN-472-0000-DOR-DDE-IR-A00-0000004-03
Electrical Model: DG-PIN-472-0000-DOR-DDE-IR-A00-0000003-03

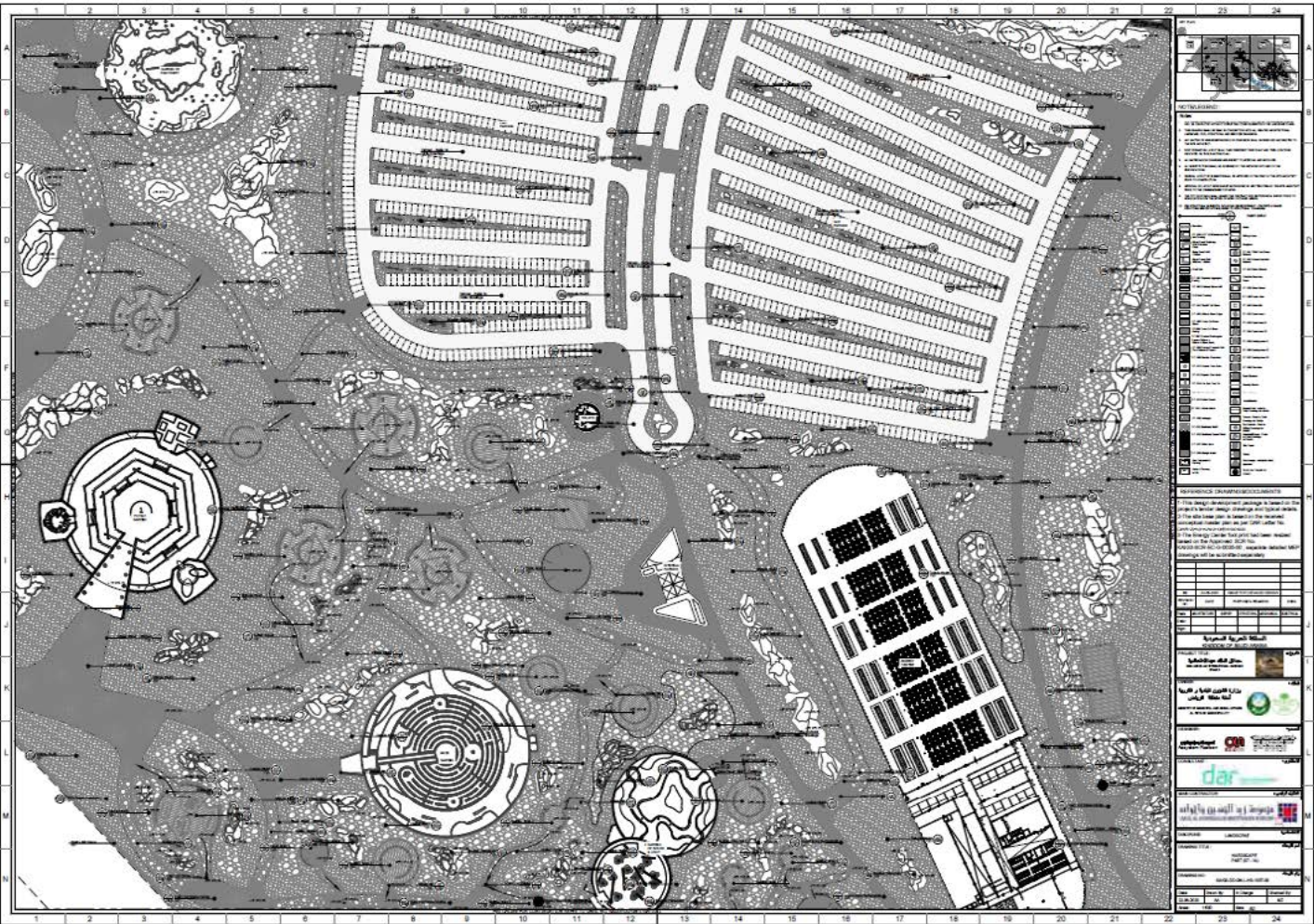
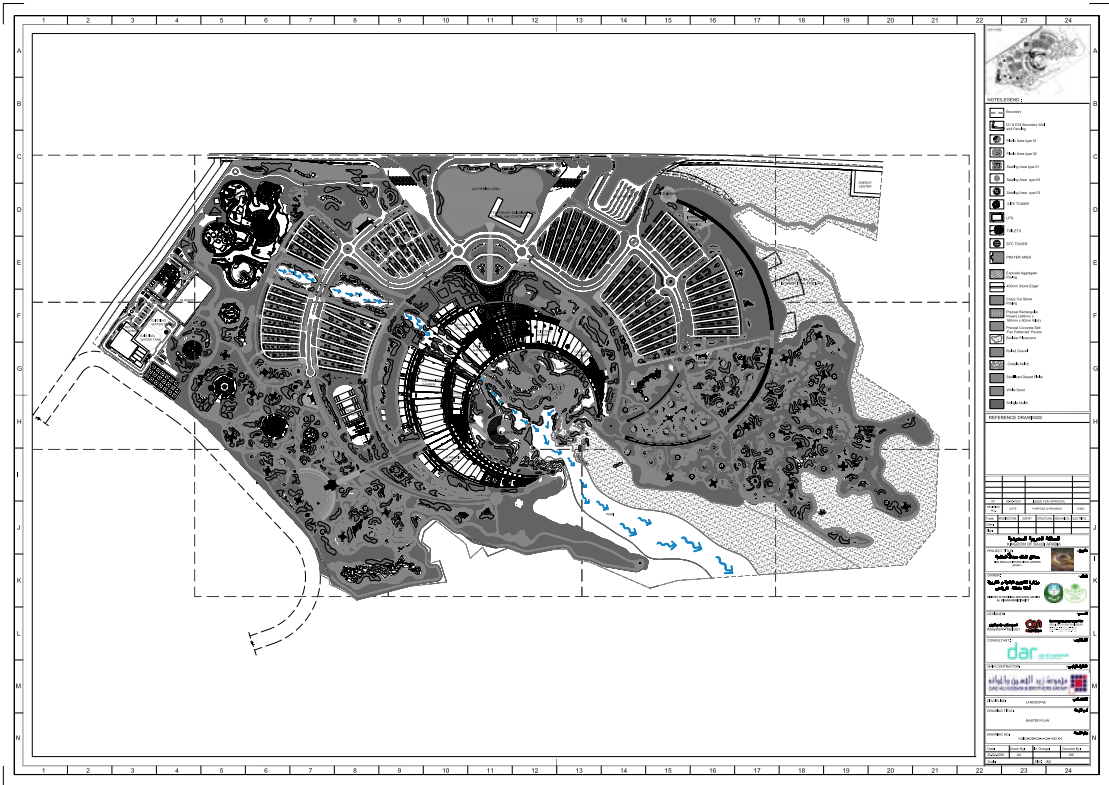
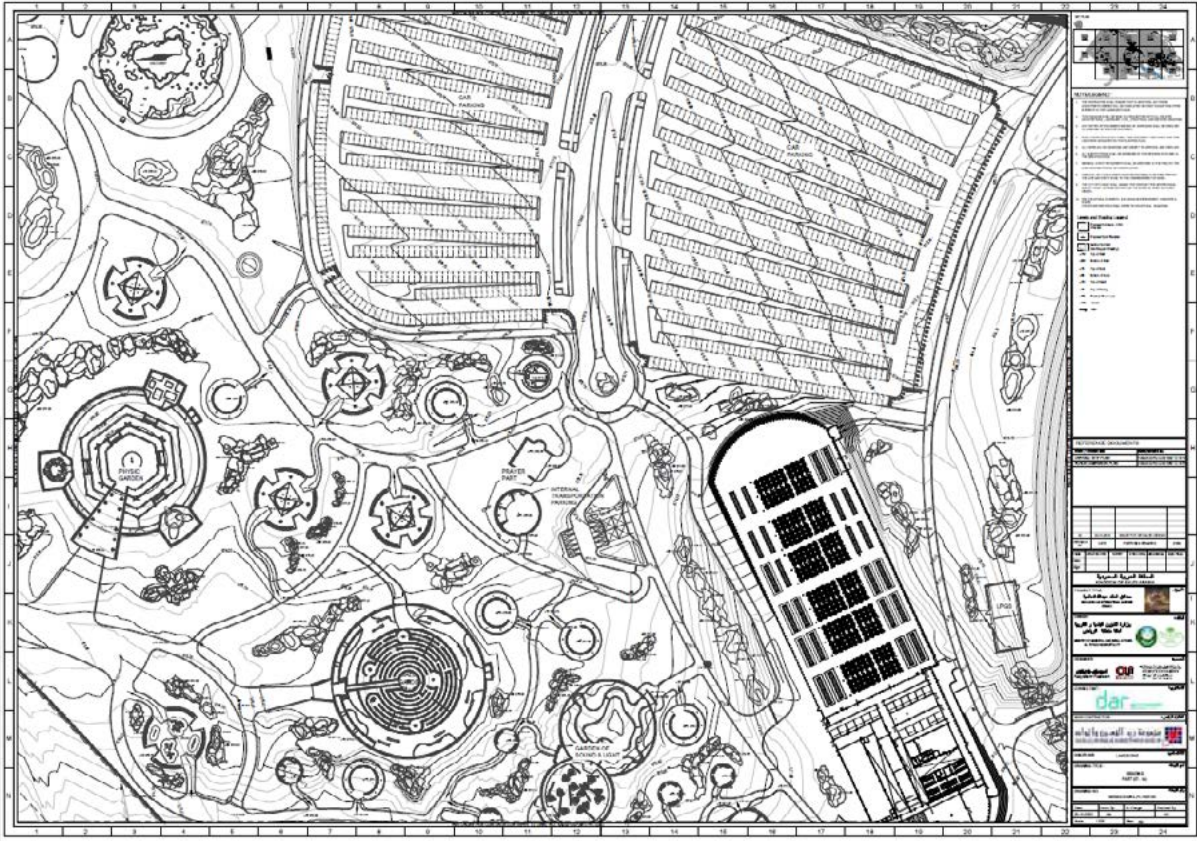
KING ABDULLAH INTERNATIONAL GARDENS

KSA

Zaid Al Hussain and Brothers Group

Total No. of Payers

Confidential



Iconic Mosques Competition

Egypt

EMAAR

Total No. of Payers

3,200 Payers

Project Description

EMAAR has invited various Architects/Design Firms to compete at a Community Mosque Design Competition for their developments; Marassi, Uptown and. Marassi's Mosque was requested to be Modern/contemporary theme over a land area of 3,500 square meters and footprint around 1,500 square meters. The Mosque shall be suitable for 1,000 prayers. As for the Uptown Mosque, it was requested to use traditional Mamloiquen elements and mix it with Uptown design theme. The Mosque had a plot area around 4,430 square meters and footprint area around 1,000 square meters and shall occupy 1,200 prayer. The Mivida Mosque shall reflect the surrounding scheme as it shall not be exclusive for Mivida residences. It has a land area around 6,140 square meters and footprint area around 1,350 square meters. The Mosque shall occupy 1,000 prayers.

Project Scope

- Architecture
- Concept Design



Total Built-Up Area

Confidential

Project Description

EMAAR MISR is one of the leading developer companies in Egypt by introducing key developments; Uptown Cairo, Mivida and Marassi. Their main aim is to create an integrated lifestyle communities and serve as a strategic partner in the socioeconomic growth of Egypt. Based on our understanding from EMAAR's requests that they would link to hire a capable consultant to undertake developing their Design Guidelines for the Residential Buildings (Single and Multi-Family Units) regarding the Architecture, ID and MEP. The Report shall be a set of recommendations and providing clear instructions to designers on how to adopt specific principles such as plans, isometric, kitchen, bathroom, elevations, sections, finishing specs, etc.



SIDE UNIT

FOYER	4.74X1.50	7.11 m²	KITCHEN	3.42X2.89
LIVING	3.75X4.25	15.93 m²	MAID KITE	2.70X3.17
DINING	4.00X4.25	17.00 m²	STORE	1.10X2.30
BATHROOM	1.67X2.10	3.50 m²	TERRACE	4.05X2.00
LAUNDRY	1.90X0.98	1.86 m²		

Egypt

26 Gezirat El Arab St. 8th Floor,
El Mohandesen, Giza – Egypt.
Tel: +202 33 052 492
Fax: +202 33 052 494
Cell:+201065524550
+201026641115
+201008553947

UAE

Office 811D |8th Floor| Tamouh Tower |
Marina Square | Al Reem Island
Cell: +971 55 38 47 737

Qatar

Regency Business Center, El Baladya Ministry
St, from El Cornish road Behind Customs & Port
Building , 6th floor, No 601, Doha, Qatar
P.O.Box 15868 Doha
Tel: +97444329932
Fax: +97444415139
Cell:+97450416860
+97466937870
+974 33547924

Saudi Arabia

Al Rawda district
Prince Saud Al Faisal St., Al haiyat Plaza, 1st floor,
office 101
P.O.Box 51687, Jeddah 21553 - KSA
Tel: +966 122841525
Fax: +966 122841526
Cell:+966 543379407
+966 547115410

Oman

Al Khuwair, Jasmine Complex,
8th Floor, Office No. 810
Building No. 2996,
Muscat, Oman
Tel: +968 24479888
Fax: +968 24488872
Cell: +968 93871289
+20 1223955957

www.distancestudio.com

