



20

24

DSC | distance
studio
consultants

**Pre-qualification
(Master-Planning)**

When we started to think about identifying ourselves and to find our true nature, we found that we are different individuals. Some are more creative than others. Some are more practical. Some are more resilient.

But... what we have in common is the passion to produce unique and distinguished work. We have the will to go the extra mile... to go the Distance..

Table of Content

06

Who We Are

20

Master-Planning
Projects

138

Contact Us



Who We Are

Distance Studio Consultants was founded in Cairo, Egypt in 2000 as a small scale yet tightly structured alliance between four partners soon joined by a fifth a year later. DSC is an experienced multidisciplinary engineering consultancy firm, with more than 370 Permanent engineers in all disciplines and twenty three years of experience. DSC works to ensure beauty, character and comfort in the environment and lifestyles of the future. DSC is an ISO certified engineering consulting firm that provides a comprehensive package of services in Africa, the Middle East and Asia.

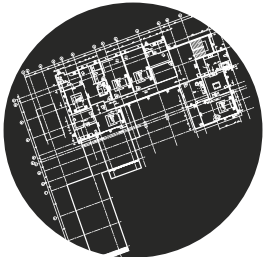
Mission

DSC is committed to produce spaces and communities that are functional, comfortable, sustainable and aesthetically pleasing. DSC caters to clients' needs, yet strives to exceed their expectations. Throughout the process of Concept Development to Construction on the ground, DSC works hand-on-hand with its Clients, enabling their dreams of shaping the future to come true.

Vission

DSC works to ensure beauty, efficient, comfort environments and life style of the future.

Our Services



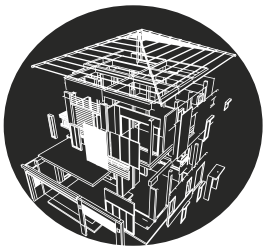
Master Planning

Through the balanced integration of road networks, green spaces, commercial centers, and living quarters, DSC creates community spaces that make work, recreation, and daily life both convenient and pleasurable.



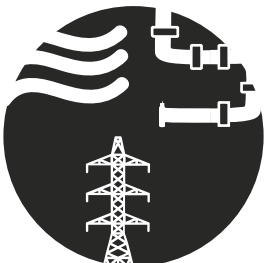
Architecture

DSC designs spaces and ambiances to best meet Clients, functional and aesthetic needs. It carefully integrates finished spaces with their structural support systems, coordinating between the relevant engineering disciplines and providing comprehensive plans for construction from start to end



Structure

DSC teams of structural engineers analyze projects' physical requirements and constraints to design optimal support systems that ensure safety and serviceability



MEP

DSC mechanical, electrical and plumbing (MEP) engineers design and oversee the coordination of the plumbing, heating ventilation and air conditioning (HVAC), and electrical power systems of each structure, complex, or community to ensure utmost reliability and efficiency



Infrastructure

To enable, sustain, and enhance planned communities, DSC provides a full range of infrastructure services including road networks, electrical grids, water and sewage networks, gas lines, and telecommunications routing



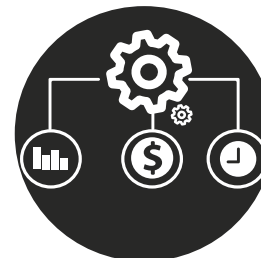
Landscape

From the soft scape of aesthetic and shading foliage to the landscape of pathways, signage, benches, and waterworks, DSC designs outdoor spaces that complement its built structures and provide environments in which to breathe and play



Interior Design

DSC designs the interior dynamics of built spaces to be welcoming, comfortable environments. Through the use of shadow and light, color and texture, green foliage, and furnishings and finishing, DSC shapes interior spaces into places you want to be in.



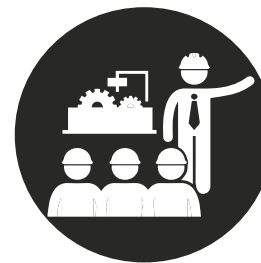
Project Management

DSC believes that each project is unique in that it is not a routine operation, but a specific set of operations designed to accomplish a singular goal by applying our Team's Knowledge, Skills, tools and techniques to meet project requirements



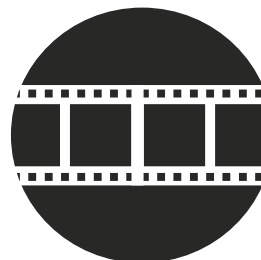
Construction Supervision

DSC provides professional construction supervision, specifically tailored to successfully deliver your project. Our highly experienced personnel can effectively control and supervise every aspect of the construction work



Construction Management

Our CM Team skillfully manage the project's stakeholders in order to deliver the project on time, at or under budget, and to the Owner's expected standard of quality



Animation

In order for our Client's to have the full design experience; we have a department for the 3D Renderings, creating storyboards, animating 3D to walk them through our designs

Awards

155

We are ranked as 155 from the top 225 international design firms according to the ENR in 2022

ENR
Engineering News-Record

015

We are ranked as one of the top 15 international design firms in mixed-use buildings sector in 2021

ENR
Engineering News-Record

001

MEED announced DSC as the Architecture Practice/Firm of the year of 2018 in the GCC

MEED
Intelligence.Events.Insight

001

From Top 6 Consultants of the year of 2019 according to the MEED

MEED
Intelligence.Events.Insight

001

We ranked as the best Luxury Architect Interior Design Studio in Egypt in 2021 according to The Luxury Lifestyle Award

Luxury
LIFESTYLE
AWARDS

002

West Bay North Beach Development ranked as 2 of 748 participants in RTF Award 2021

rtf

001

Abo Simbel Resort ranked as 1 of 748 participants in RTF Award 2021

rtf

001

Solas Office Building ranked as 1 of 748 participants in RTF Award 2020

rtf

001

Shatek El Qurm ranked as 1 of 748 participants in RTF Award 2019

rtf

002

Al Raha Residential Buidling ranked as 2 of 748 participants in RTF Award 2018

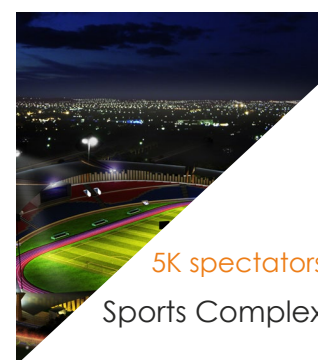
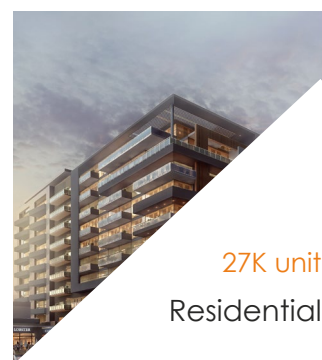
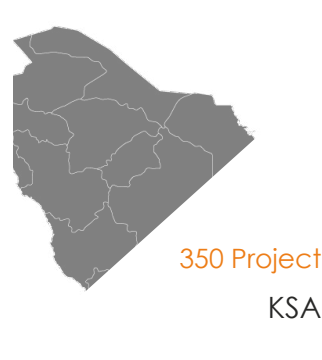
rtf

001

We were ranked from the top Design Companies in Egypt according to the Luxury Award

Luxury
LIFESTYLE
AWARDS

Achievements



Our Team

46 Master Planning
Architects

59 Designers

38 Landscape
Architects

37 Structural
Engineers

19 Civil
Engineers

91 Architectural
Engineers

22 Interior
Designers

23 Infrastructure
Engineers

92 MEP
Engineers

24 Quantity
Surveyors

12 Project
Managers

20 Construction
Supervision

54 BIM
Engineers

35 Feasibility Study
Engineers

14 Cad
Operators

29 Construction
Management

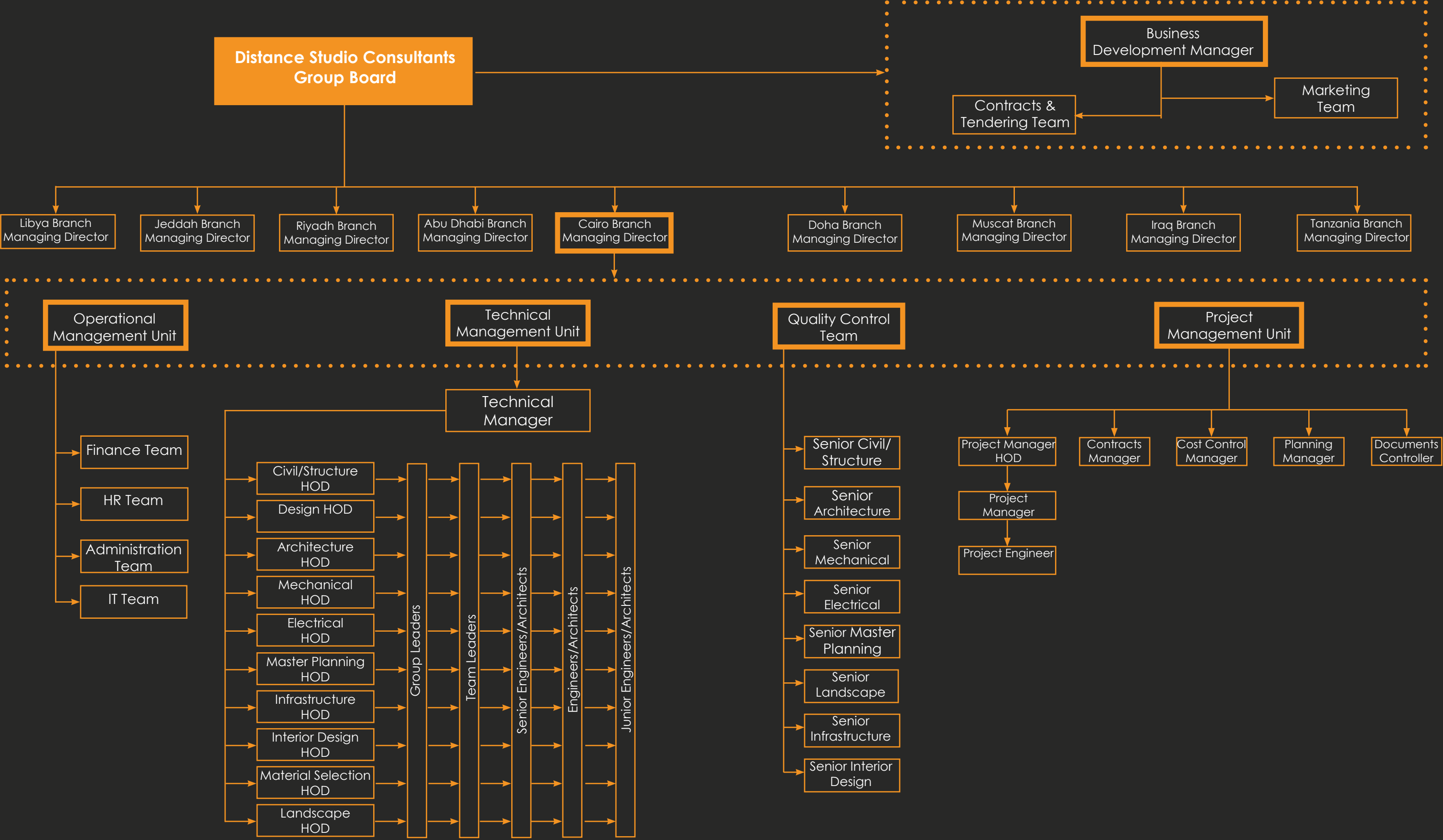
16 QA/QC
Engineers

37 Graphic
Designers

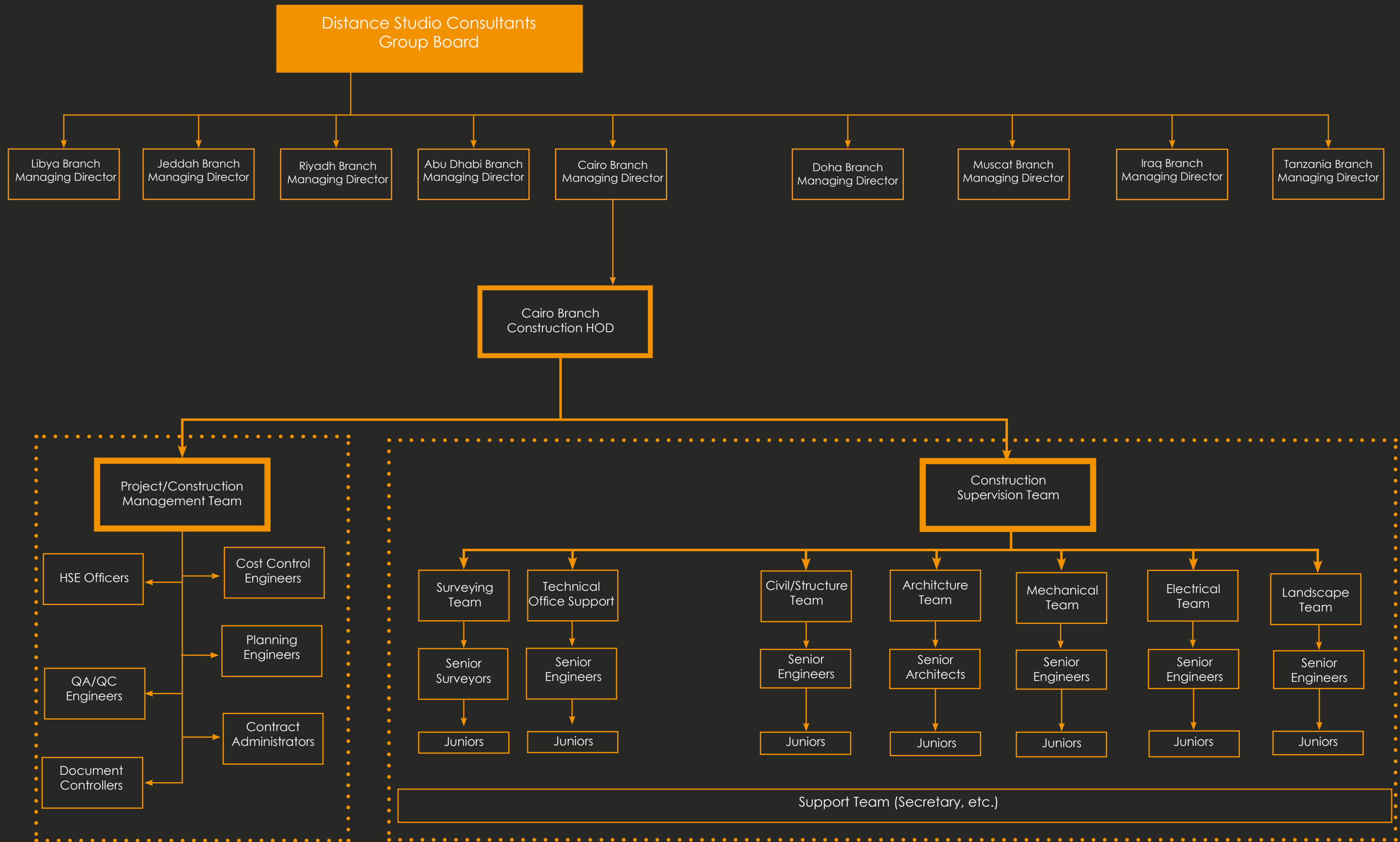
36 Animation

39 Business
Development

Design Organization Chart



Company Organization Chart



URBAN

It's the art of creating and shaping cities and towns. Urban design is the process of giving form, shape and character to groups of buildings, to whole neighborhoods and the City. It is about making connections between people and places, movement and urban form, nature and the built fabric. **DSC is worked in 410 M sq. m. - Urban Projects.**

Development Plan of Ras El Hekma Water Front City

Ras El Hekma, Egypt

Egypt United Nations Habitat

Land Area

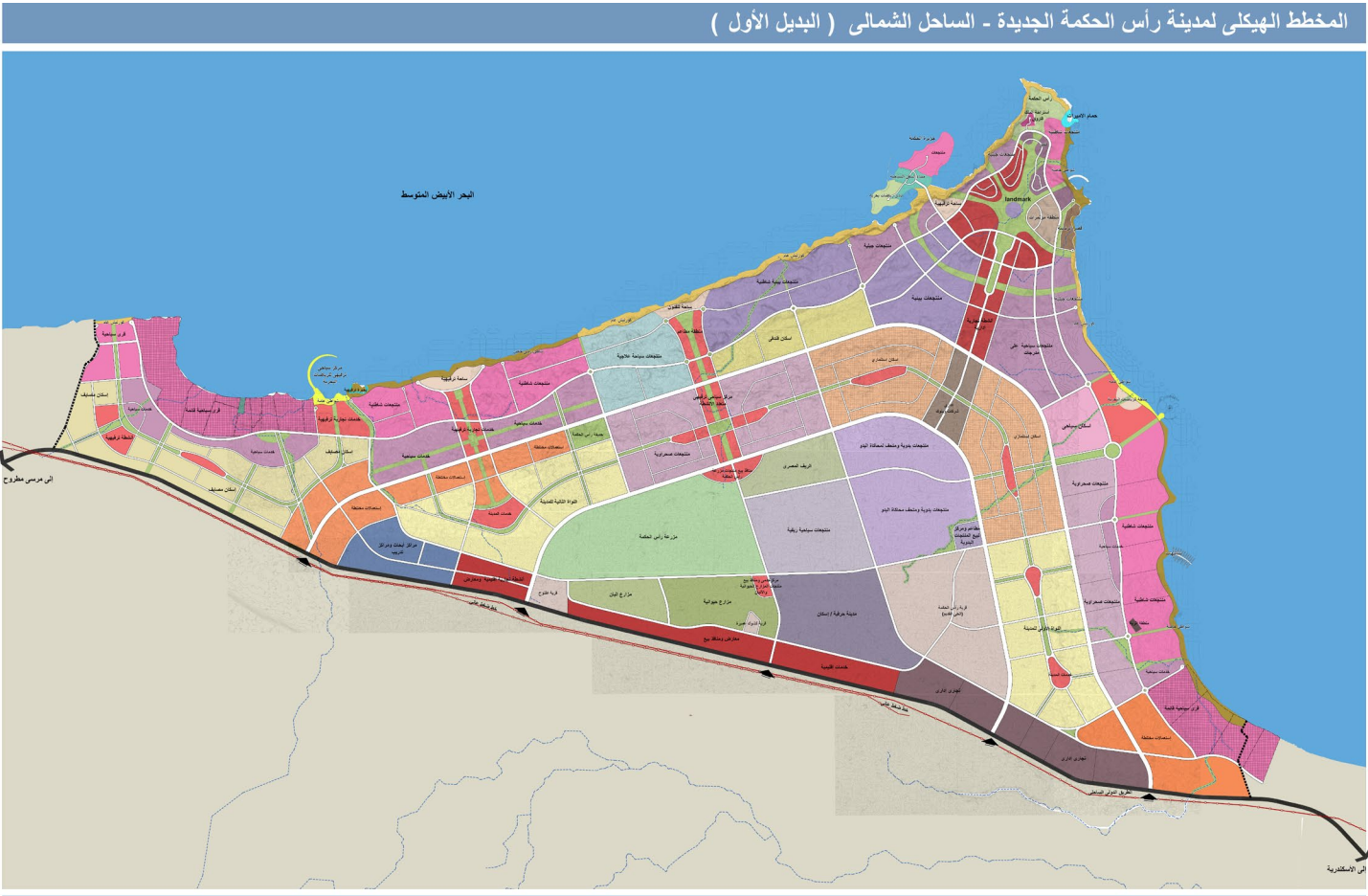
231 Million sq. m.

Project Description

DSC in collaboration with CallisonRTKL were awarded the development of 57,100 Acres (55,000 Feddans) for Ras El Hekma City Waterfront. The plan is to develop Ras Al Hekamah to be one of the most attractive waterfronts on the Mediterranean coast competing with other similar cities. The city will be characterized by its unique environmental and Mediterranean characteristics to reflect in its unique ecological, cultural, urban and location. The project will adopt a new model for the planning and implementation of Ras Al Hekamah Tourism City through the application of international urban design methods to ensure efficient use of natural resources, economic diversification and economic sustainability.

Project Scope

- Sustainable Development Strategy
 - Environmental Studies
 - Infrastructure Studies
 - Tourism Studies
 - Local Economy Studies
 - Sustainable Economic Studies
 - Land Use and Road Network
- Development Principals
 - 2 Pre-concept Design Options
 - Develop final concept Design Option





Capital Gardens

East of Cairo, Egypt

New Urban Communities Authorities

Land Area

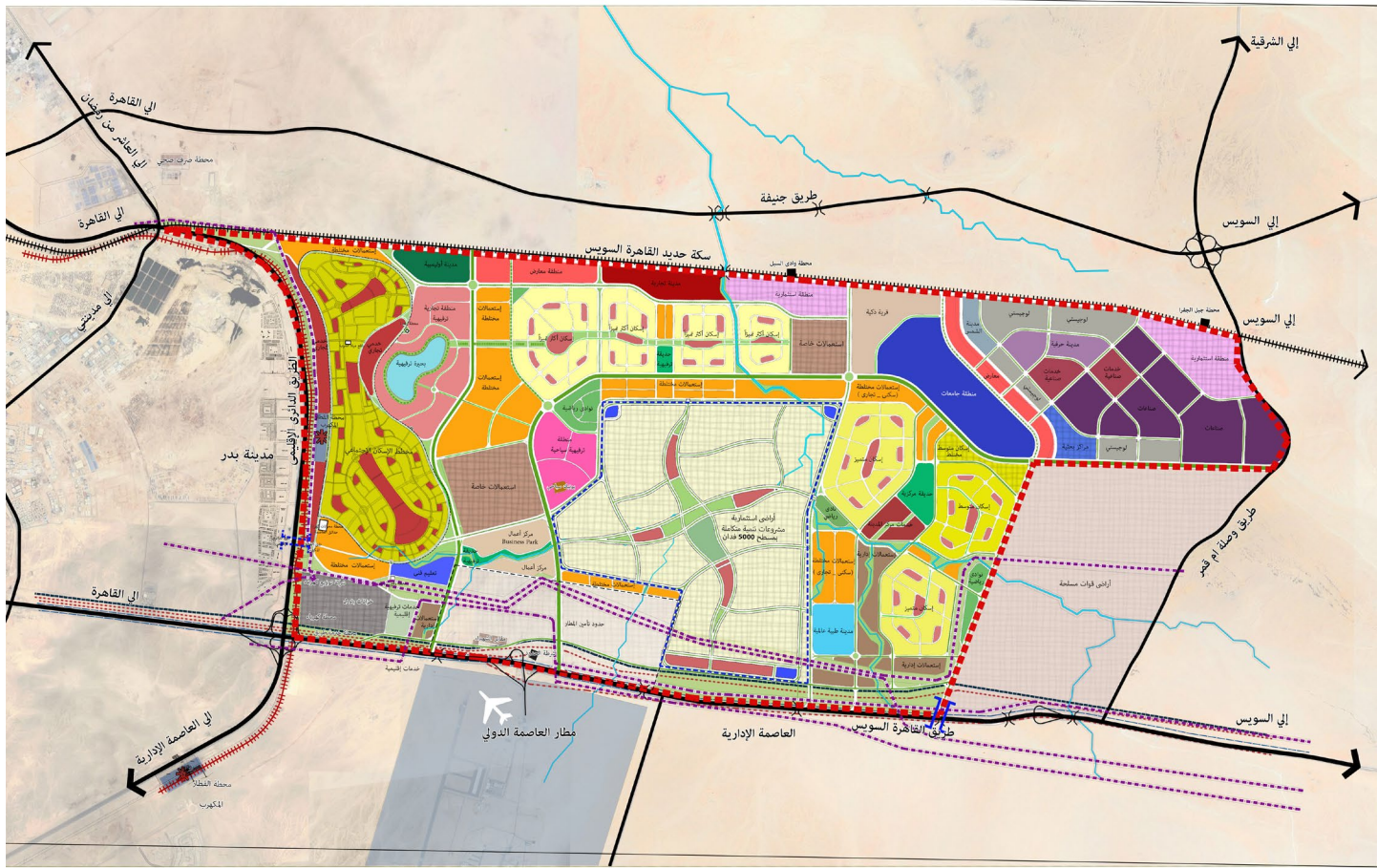
138,600 Million sq. m.

Project Description

Over 33,000 Feddan in East of Cairo, the New Urban Communities Authority has decided to develop the extension of Badr City. The new extension shall include Residential, Commercial, Entertainment and Services such as Educational and Health Care.

Project Scope

- Sustainable Development Strategy
 - Environmental Studies
 - Infrastructure Studies
 - Tourism Studies
 - Local Economy Studies
 - Sustainable Economic Studies
 - Land Use and Road Network
- Development Principals
 - 2 Pre-concept Design Options
 - Develop final concept Design Option

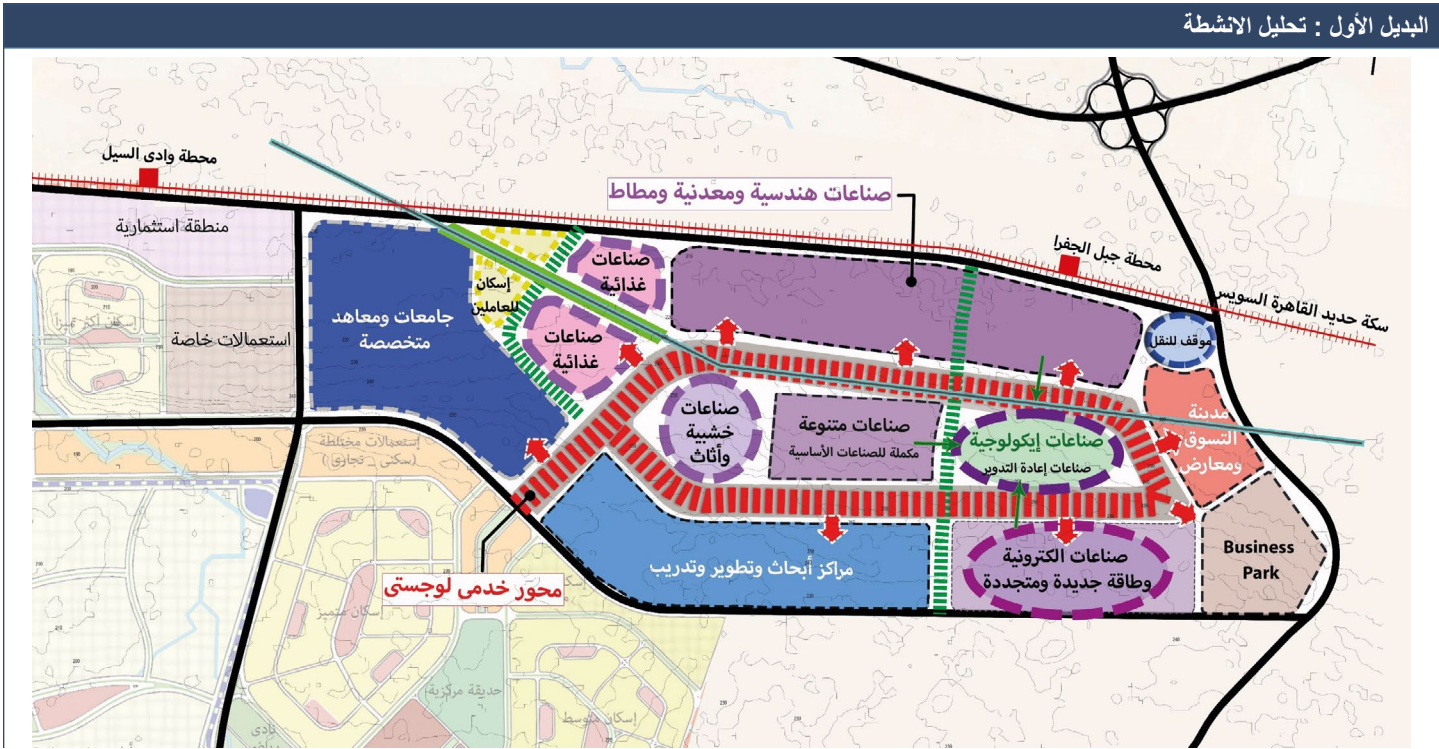


Industrial City in Capital Gardens

Egypt New Urban Communities Authorities

Total Land Area

5,000 Feddan

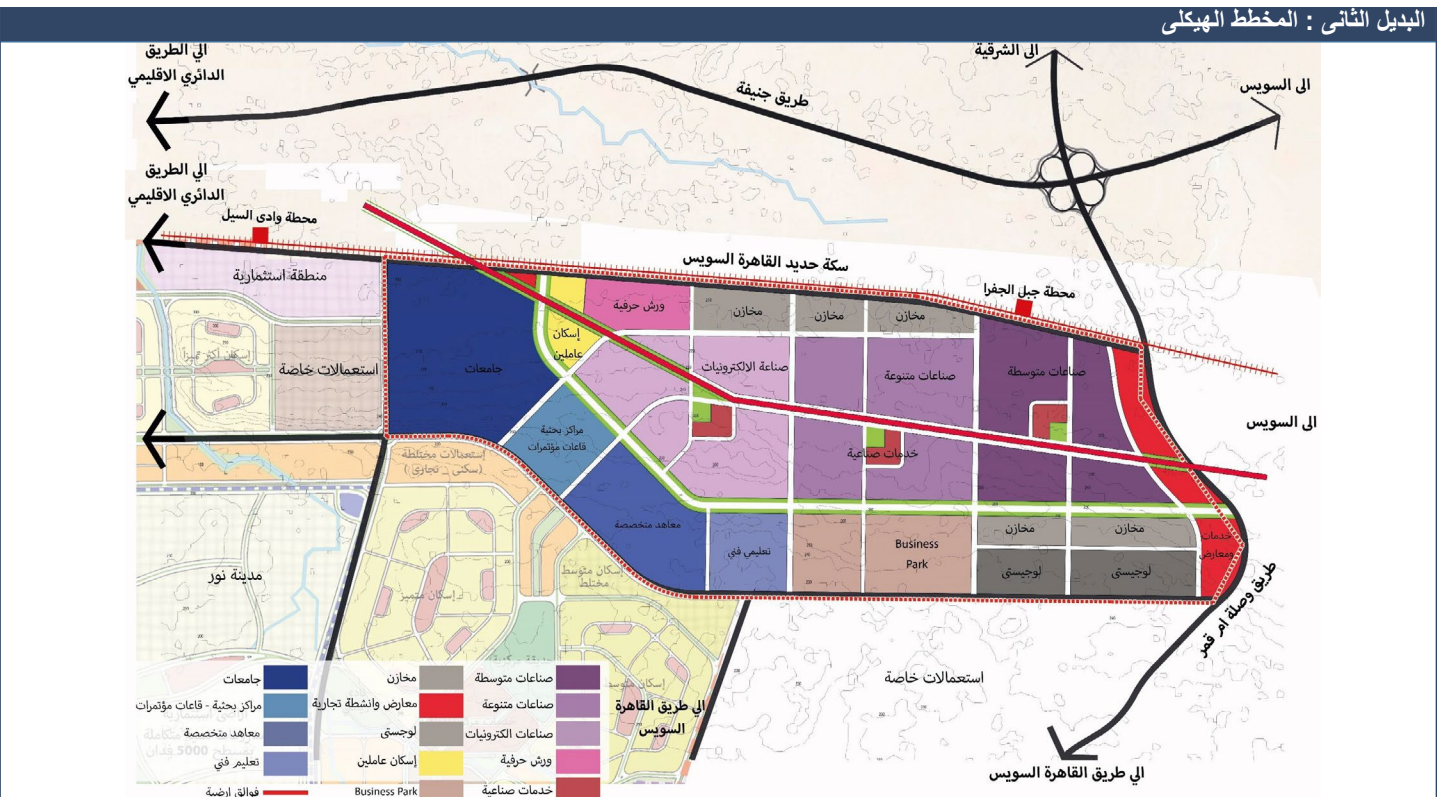
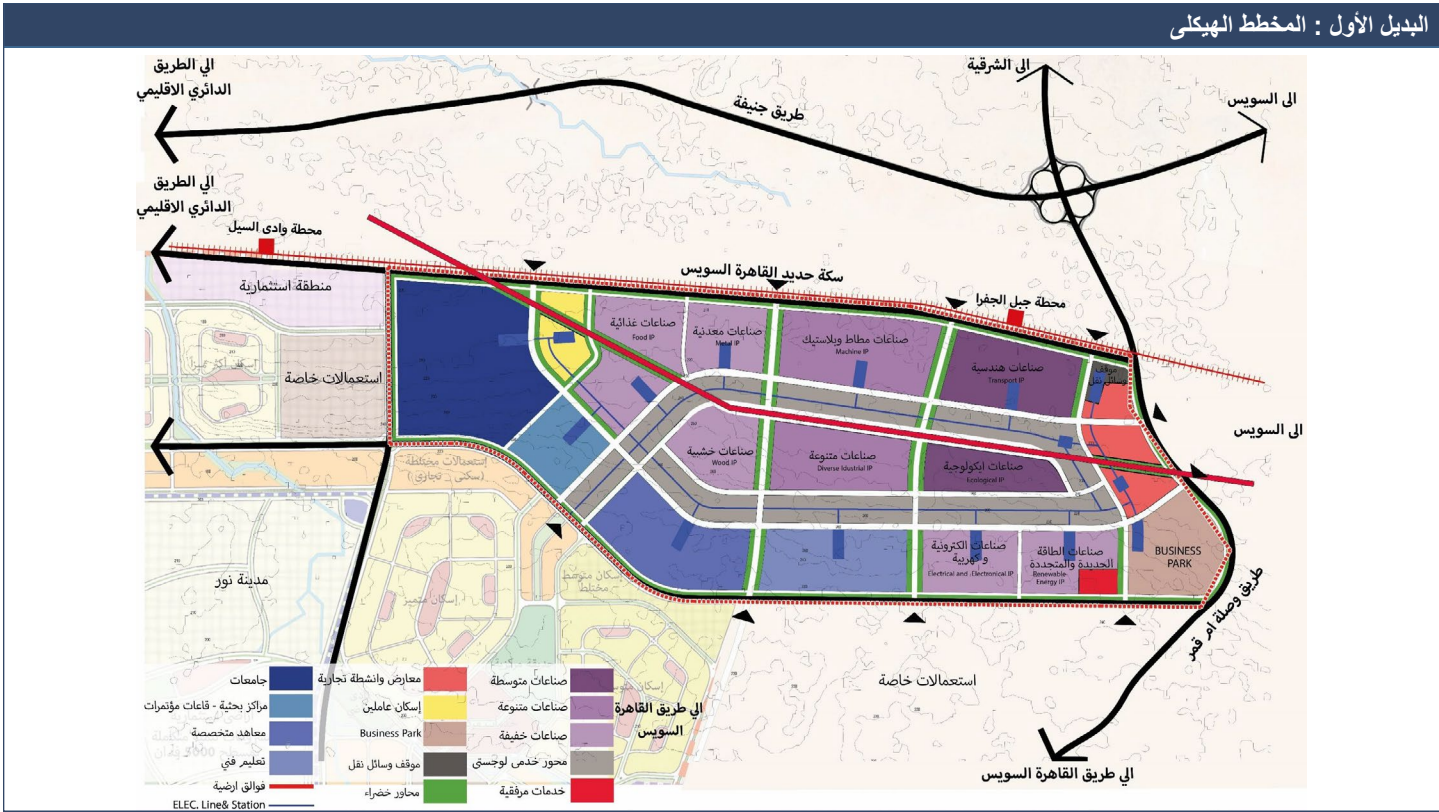
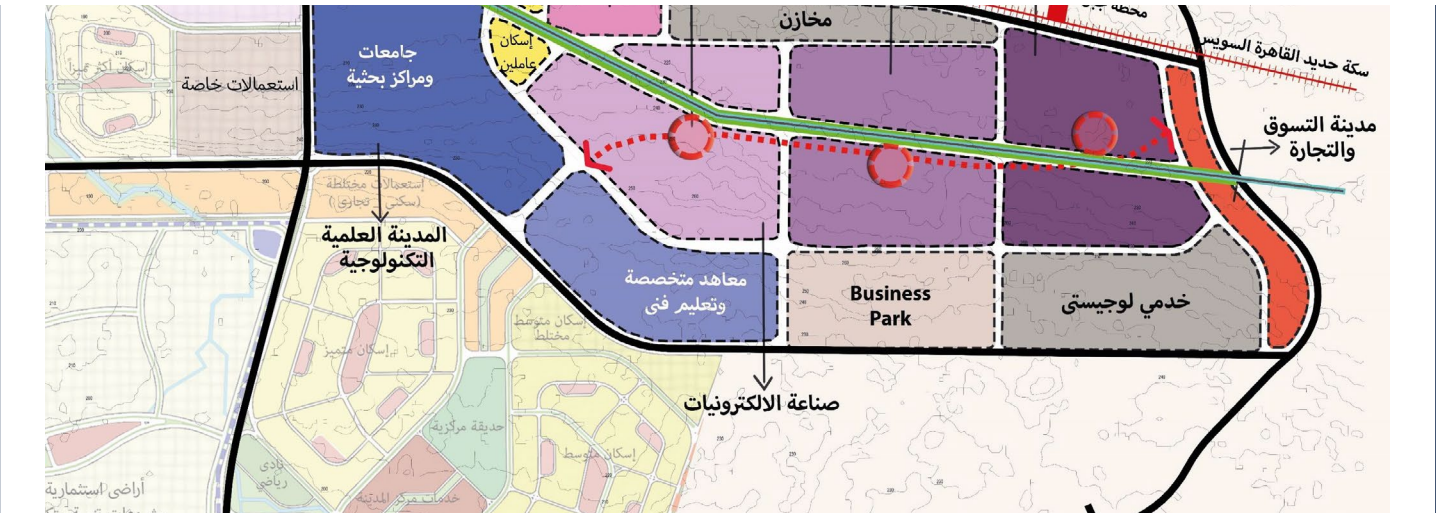


Project Description

A new Industrial City with land area around 5,000 Feddan (21,000,000 square meters) is located within the 33,000 Feddan of Capital Gardens. The city shall be divided into 5 main zones to consist of Engineering, mineral, New and renewable energy, electrical and electronic, Wooden Furniture factories and Services areas such as Business Park, Residential Units, etc.

Project Scope

- Economic feasibility study and environmental impact assessment
- Preparing an integrated land use plan for the industrial zone
- Design and execution drawings for detailed planning works
- Concept Design
- Schematic Design
- Detailed Design
- Tender Documents



Marina Al Alamain

Egypt

New Urban Communities Authorities

Land Area

171.6 Feddan

Project Description

DSC is working with The New Urban Communities to update the urban design of Marina El Alamein Center with an area of 3,952 acres, with the addition of southern extension area of 2,708 acres. The site has distinct characteristics as it is considered the gateway to the northwest coast and it is linked to a group of main traffic axes such as the international coastal road, Wadi El-Natron - El Alamein road, and is bordered from the south by the Alexandria-Matrouh railway, which increases the site's connectivity with the assemblies of the North West Coast Region.

Project Scope

- Regional studies
 - Economic studies
 - Environmental studies
 - Population studies
 - Infrastructure Studies
 - Urban Planning
 - Ministry Degree
- Pre-Concept Design
 - Concept Design & Master Planning



Marina Al Alamain - Detailed Planning

Egypt

New Urban Communities Authorities

Land Area

171.6 Feddan

Project Description

The redevelopment of Marina Almain shall be over several phases and the Master Planning Design of the archaeological area shall be considered as Phase One of this mega project. The Archaeological area is over 171.6 Feddan (720,000 square meters) to be developed into a Touristic Residential Archaeological area. The project shall consist of Cornich, Residential Units, Hospitality Buildings, Commercial and Entertainment components.

Project Scope

- Master Plan
- Urban Planning
- Architecture
- Structure
- MEP
- Infrastructure
- Landscape
- Concept Design
- Schematic Design
- Detailed Design
- Tender Documents
- Permit

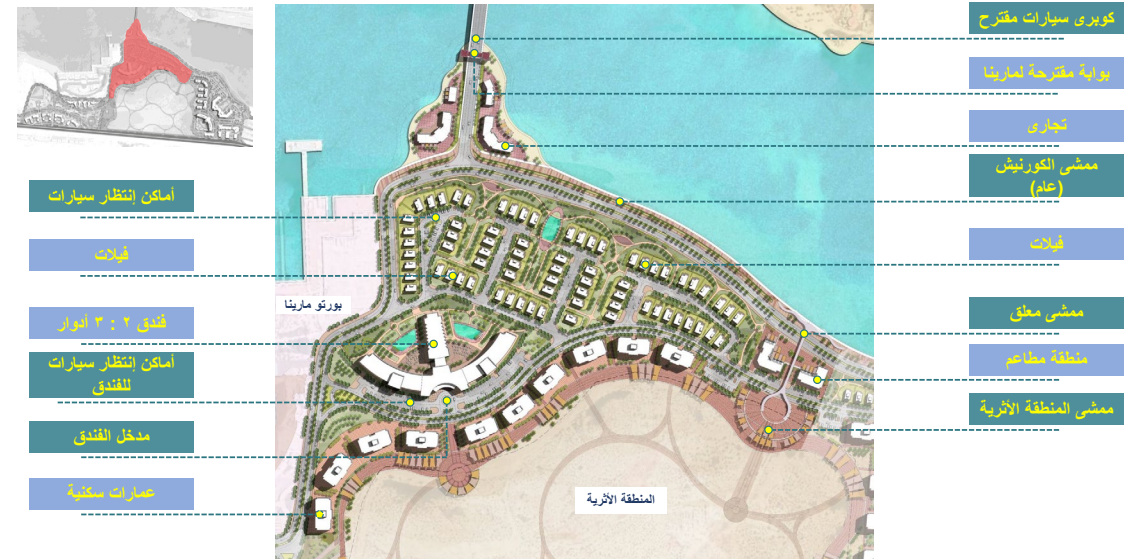
المخطط التفصيلي للمنطقة الأثرية_ الموقع العام



المخطط التفصيلي للمنطقة الأثرية_ الموقع العام "المنطقة الأولى"



المخطط التفصيلي للمنطقة الأثرية_ الموقع العام "المنطقة الثانية"



المخطط التفصيلي للمنطقة الأثرية- الموقع العام "المنطقة الثالثة"



Mina Hasheesh

Egypt

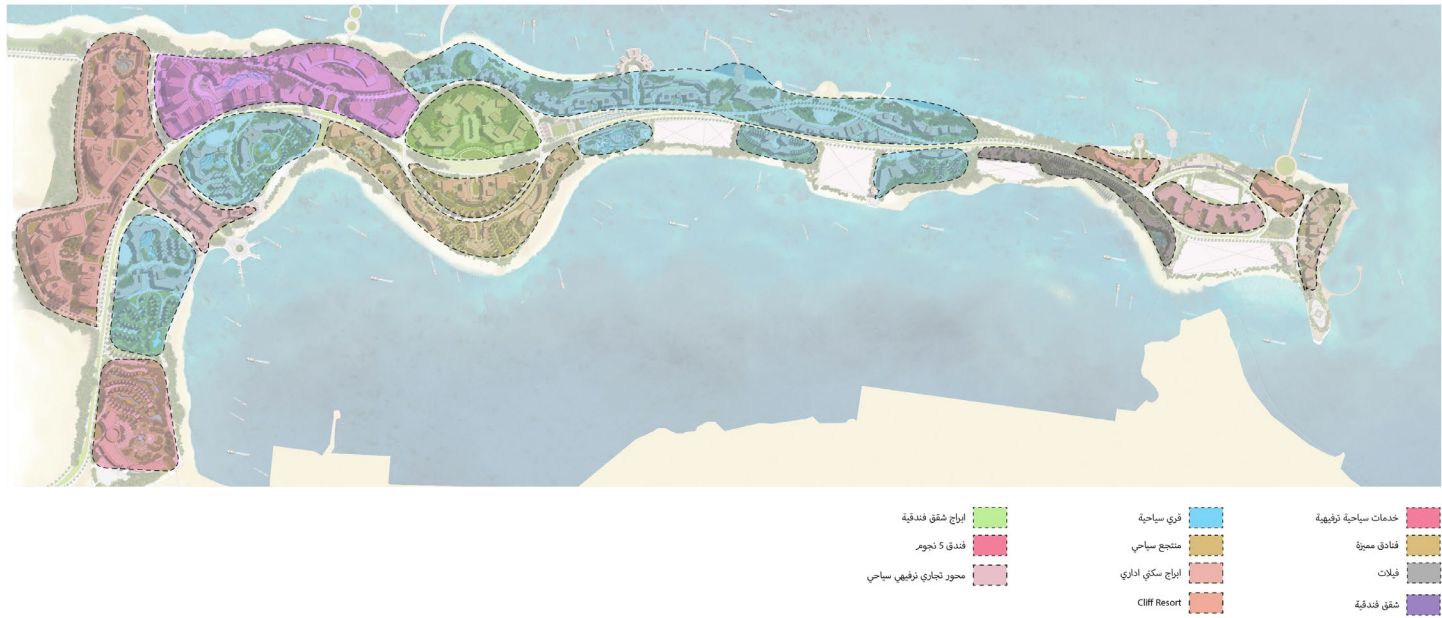
New Urban Communities Authorities

Land Area

8,513,400 sq. m.

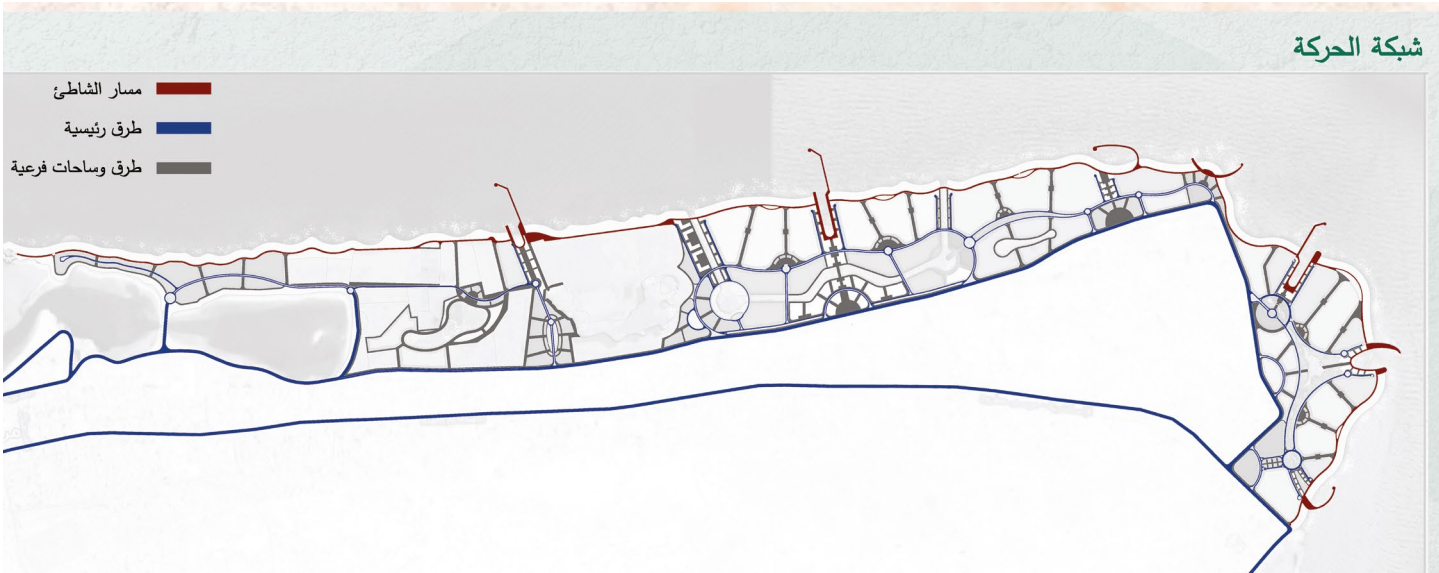
Project Description

The New Urban Communities Authority seeks to develop the Port of Hashish area in the northwestern coast of Marsa Matruh. The project area is 8,513,400 square meters. The project has a waterfront of 10 km on the Mediterranean coast, and the project includes many tourist uses such as 5-star tourist resorts, beach resorts and hotel housing. And recreational activities such as restaurants, shops, theater and squares for celebrations. The project also includes a yacht marina and a financial and business center



Land Area

2,646,000 sq. m.



Project Description

The New Urban Communities Authority seeks to develop and develop the CLEOPATRA area in the north-west coast of Marsa Matrouh. The project area is 2,646,000 M2. The project has a 5 km long waterfront on the Mediterranean coast, the area has been developed as a heritage tourist center with many tourist uses such as tourist resorts (5 stars), beach tourist villages and hotel housing. And entertainment activities such as restaurants, shops, a theater and arenas for celebrations. It also includes a conference center, residential administrative towers, exhibition areas and a marine sports area (marina).



Abu Mureikhah Master Plan

UAE

Aldar Properties

Land Area

2,860 sq. m.

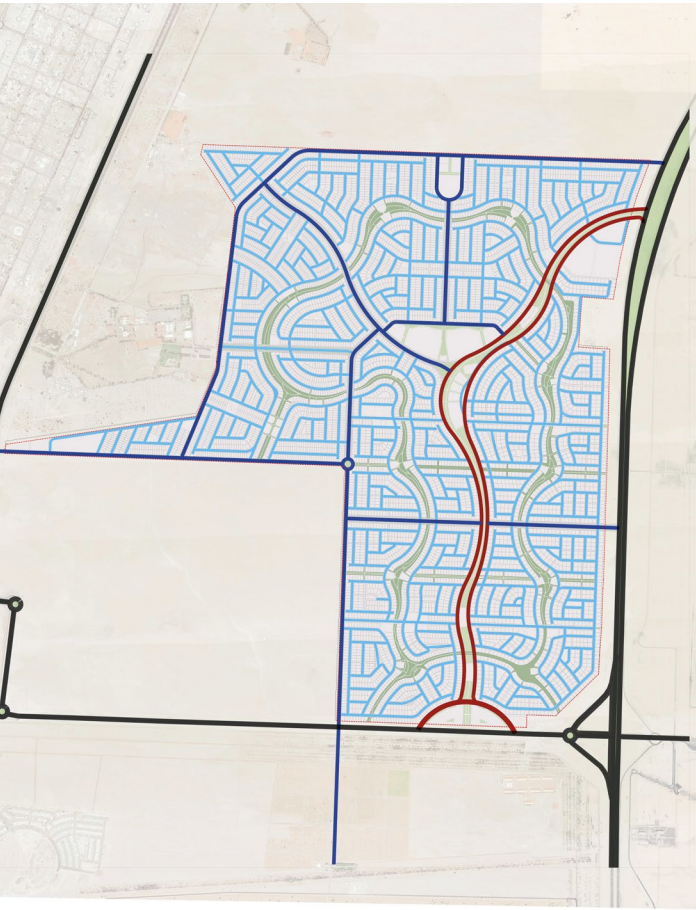
Project Description

Aldar Properties has a Residential development with a land area around 2860 Feddan in Abu Dhabi to offer 6,700 Villas along with Community facilities, public realm and service amenities



Project Scope

- Master Plan
- Pre-Concept Master Plan



Al Haffar Vission Masterplan

UAE

Aldar Properties

Land Area

10,935 sq. m.

Project Description

Aldar Properties has a new national housing development with a land area around 10,935 square meters in Abu Dhabi to offer 4,000 Residential Plots along with Community facilities, public realm and service amenities



Project Scope

- Master Plan
- Pre-Concept Master Plan



New Suez City Extension Competition

Suez, Egypt

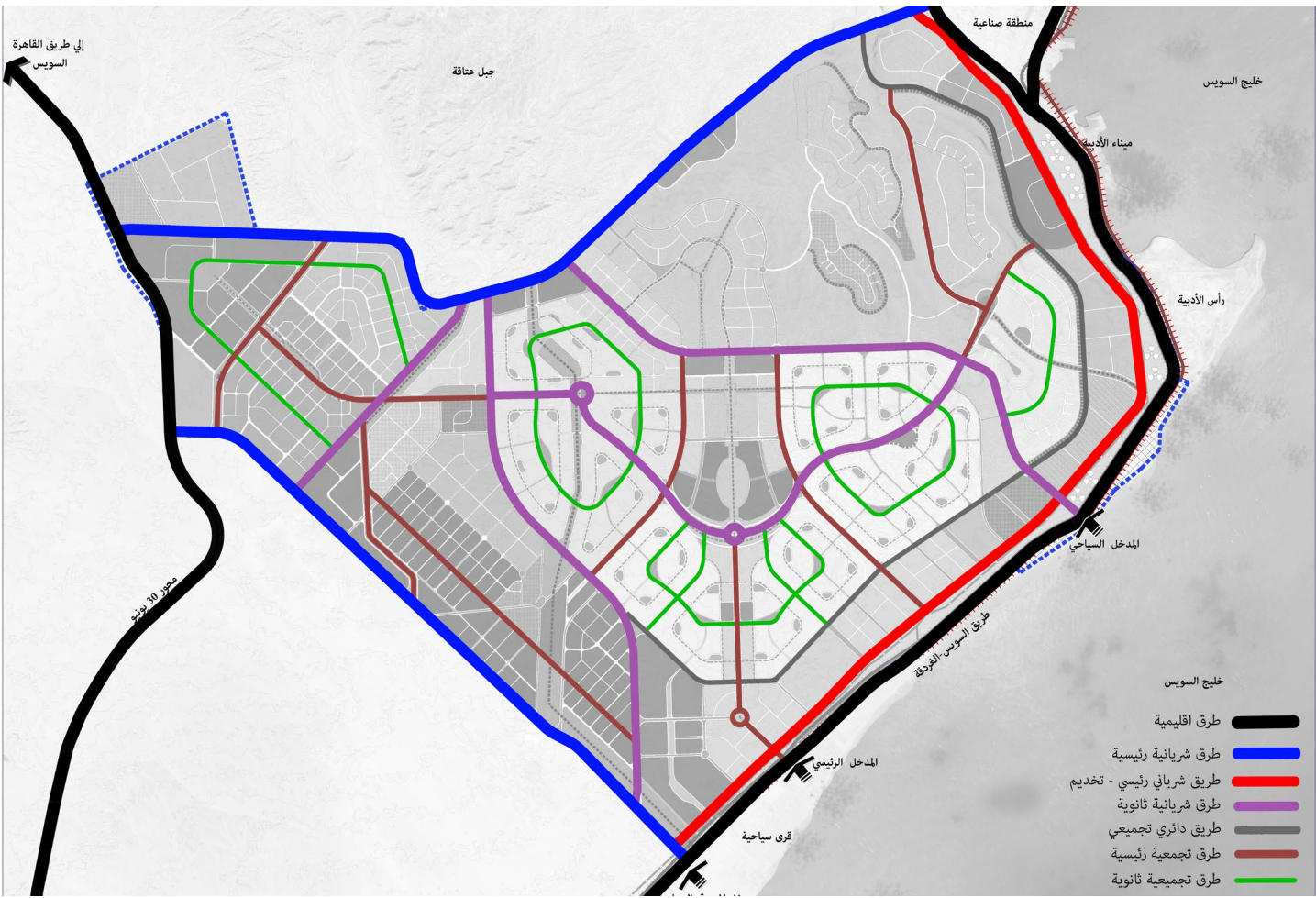
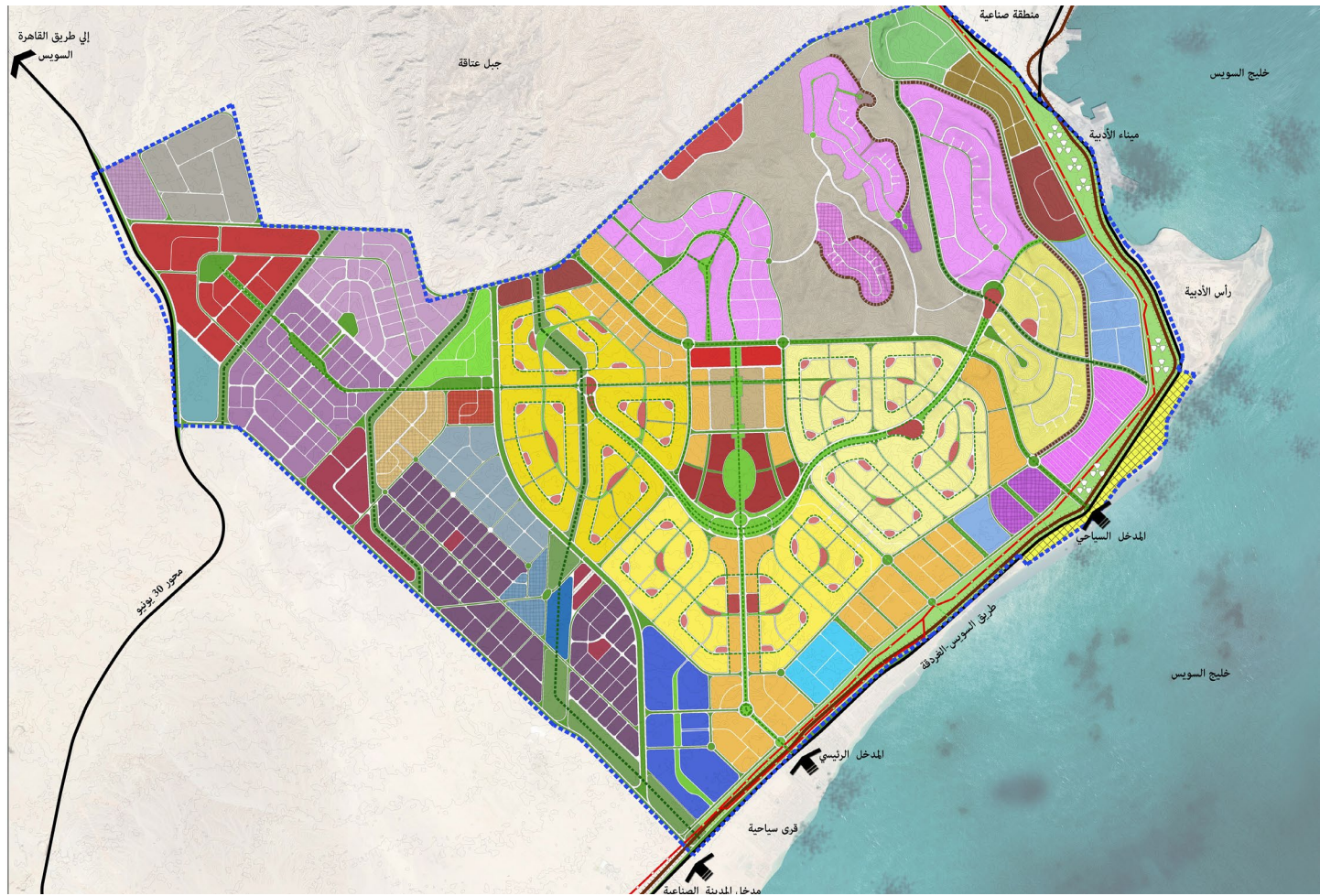
Land Area

210,000 Million sq. m.

Project Scope

- Sustainable Development Strategy
 - Environmental Studies
 - Infrastructure Studies
 - Tourism Studies
 - Local Economy Studies
 - Sustainable Economic Studies
 - Land Use and Road Network
- Development Principals
 - 2 Pre-concept Design Options
 - Develop final concept Design Option

New Urban Communities Authorities



Rabiet Makkah II

Mecca, KSA

Khalid Saud Al- Shobily Real Estate

Land Area

1,000,000 sq. m.

Project Description

Only 10 kilometers from the Grand Mosque of Holy Mekkah, Rabiet Makkah is a pilgrimage residency complex that comprises residential, commercial and mixed-use areas including office spaces in addition to a mega project central zone that comprises a high-rise hotel, parking garages and first class mall. The designed project centers a new environmentally friendly district along the high-speed rail line, linking Jeddah to Holy Makkah to Al Madina Al Monawara while leveraging the hospitality and lifestyle.

Project Scope

- Urban planning
 - Infrastructure
 - Landscape
 - Architecture
 - Structure
 - MEP
- Concept Design
 - Schematic Design
 - Detailed Design
 - Tender Documents



Bleu Vert Compound

New Administrative Capital, Egypt

SECON

Land Area

249,000 sq. m.

Project Description

SECON owns a land located in Administrative Capital, Egypt with approximately land area of 249,000 sq.m. The compound shall consists of Residential Buildings and Commercial/Administrative Buildings. The project will consist of about 2,800 apartment with five (5) fully finished different type.

Project Scope

- Urban planning
 - Infrastructure
 - Landscape
 - Architecture
 - Structure
 - MEP
- Concept Design
 - Schematic Design
 - Detailed Design
 - Tender Documents
 - Tendering & Evaluation





Il Mondo Compound

New Administrative Capital, Egypt

RFCO Real Estate Development

Land Area

96,600 sq. m.

Project Description

RFCO for Construction and Development Company has acquired a new land in the New Administrative Capital in Egypt with a land area around 23 Feddan (96,600 square meters). The project shall consist of 7 Residential Buildings Prototypes, Commercial Building and Clubhouse.

Project Scope

- Urban planning
 - Infrastructure
 - Landscape
 - Architecture
 - Structure
 - MEP
 - Interior Design
- Concept Design
 - Schematic Design
 - Detailed Design
 - Tender Documents







Rivan Residential Compound

New Administrative Capital, Egypt Al-Tameer Arabian for Development Real Estate Company

Land Area

298,200 sq. m.

Project Description

The client is developing a new land in the New Capital Administrative with a land area around 17 Feddan to develop a Mixed-Use Development comprising Residential Buildings and Mall Strip. As per the Land and Government restrictions, the maximum Foot Print Area should be around 22% of the total land area. Based on our design,

the project has the following components; Residential Buildings and Commercial Building. The Residential Buildings, we are offering 5 different Apartment sizes, 1 Penthouses Prototype, Link Villa and Gym.

Project Scope

- Urban planning
- Infrastructure
- Landscape
- Architecture
- Structure
- MEP
- Concept Design
- Schematic Design
- Detailed Design
- Tender Documents





Pyarmid Hills Phase 3

Cairo-Alexandria Road, Egypt

Gocom Investment

Total Land Area

10,000 sq. m.

Project Description

Gocom Investments are extending their high end Residential Compound, Pyramid Hills, Phase 3 over a land area around 10,000 square meters. Distance Studio has designed the Master Plan and Landscape for the land; Architecture and Structure for Twin and Town houses.

Project Scope

- Architecture
 - Urban planning
 - Structure
 - Landscape
- Concept Design
 - Schematic Design
 - Permit Documents including Ministerial Decree
 - Detailed Design
 - Tender Documents



La Palma Residential Compound

Riyadh, KSA

Al-Habib Company

Total Land Area

Confidential

Project Description

La Palma Riyadh is a newly –constructed, secure and fully furnished 480 unit luxury residential community in a contemporary western accommodation, carefully designed from the ground – – up for the enjoyment and safety for future residents. La Palma Riyadh North compound will offer the western expatriate community of Riyadh, a variety of 5 luxurious and fully furnished housing options with rental rates to meet all budgets. A range of recreational amenities, services and restaurant, flat-screen televisions, gated

Project Scope

- Urban planning
- Infrastructure
- Landscape
- Architecture
- Structure
- MEP
- Concept Design
- Schematic Design
- Permit Documents
- Detailed Design
- Tender Documents
- Tendering & Evaluation
- Construction Supervision



Zain Compound

Al Riyadh, KSA

Zain Company

Total Land Area

60,000 sq. m.

Project Description

Designed for Zain affiliates, this compound consists of a hotel for company guests and three clusters of residencies for employees, each with a swimming pool and landscaping. Residences include apartments and attached and separate villas, and are designed in an American modern ranch style with red brick, vaulted windows, and simple moulding. The compound also includes a recreation area with an equestrian club and sports facilities including a tennis court, soccer field, and mini-golf course.

Project Scope

- Urban planning
- Infrastructure
- Landscape
- Architecture
- Structure
- MEP
- Concept Design
- Schematic Design
- Detailed Design
- Tender Documents



Mecca Mixed-Use Complex

Mecca, KSA

Confidential

Total Land Area

248,155 sq. m.

Project Description

Only 15 minutes away from the Grand Mosque of Mecca, the Mekkah Mixed-Use Complex will form a fully self-sufficient neighbourhood including permanent and pilgrimage residences, a hotel, retail shops, a hypermarket and mall, office buildings, a community center, and a mosque. An iconic tower furnishing office space will make the compound a landmark for miles around.

Project Scope

- Urban planning
- Infrastructure
- Landscape
- Architecture
- Structure
- MEP
- Concept Design
- Schematic Design
- Detailed Design
- Tender Documents



Al Reem Residential Compound

Jeddah , KSA

Al Habib Company

Total Land Area

35,000 sq. m.

Project Description

A modern Residential Compound in Jeddah over a land area around 35,000 square meters. The compound offers Stand-alone Villas, Twin and Town homes.

Project Scope

- Urban planning
- Architecture
- Structure
- MEP
- Interior Design
- Concept Design
- Schematic Design
- Permit Documents
- Detailed Design
- Tender Documents
- Tendering & Evaluation
- Construction Supervision



Thakher City

Mecca, KSA

Thakher Real Estate Development Co.

Total Land Area

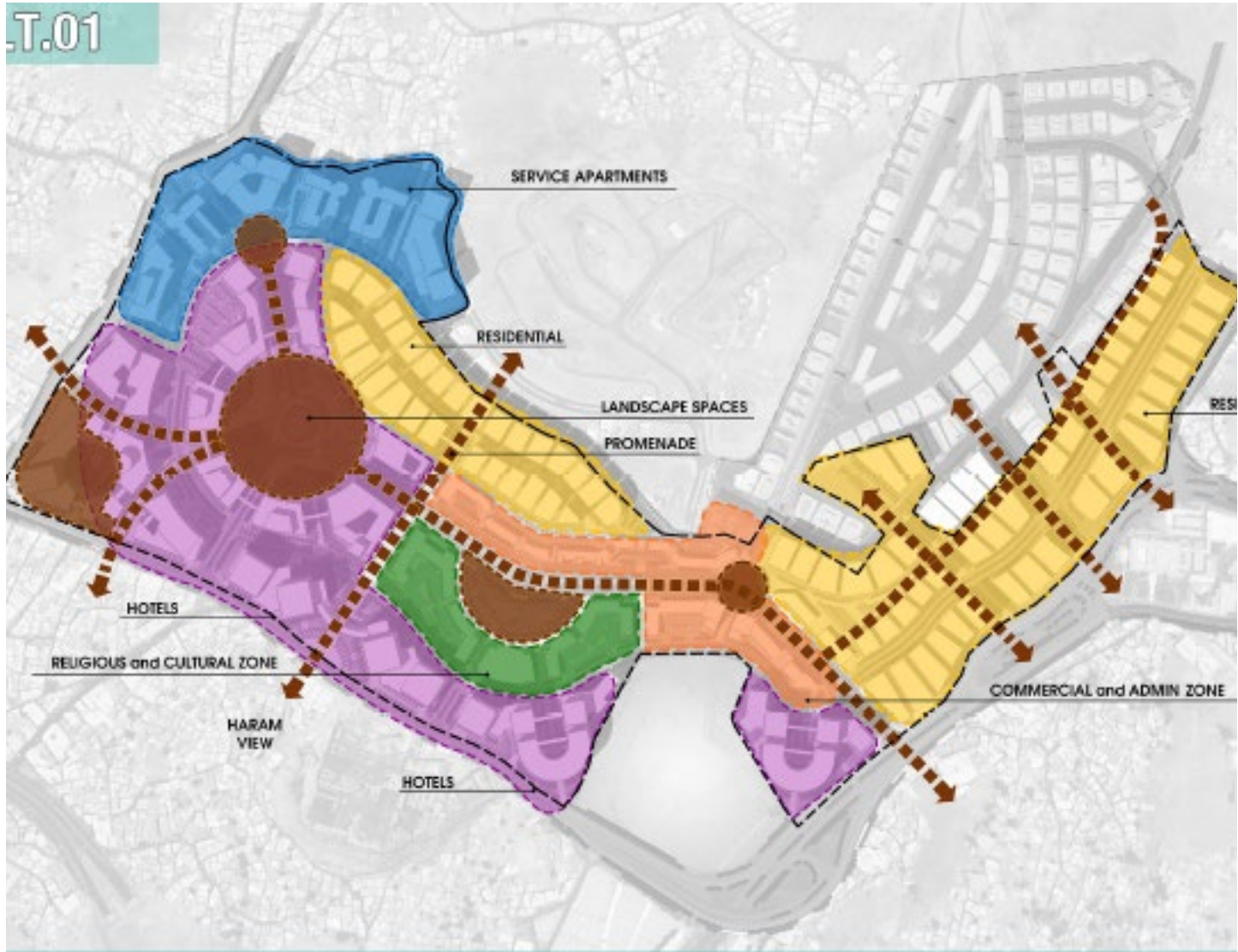
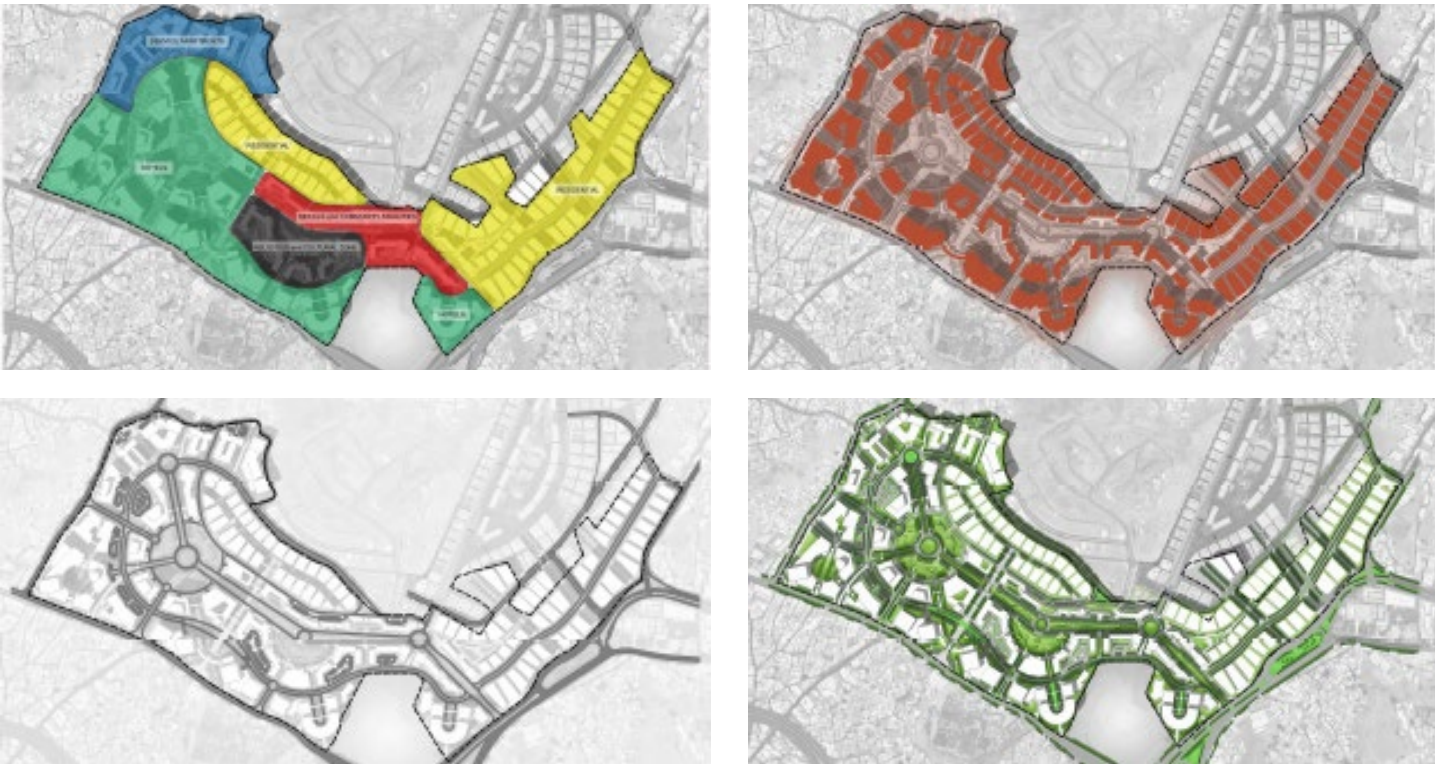
800,000 sq. m.

Project Description

Over 800,00 square meters, Thakher Real Estate Development are developing a new City in Mecca that comprise Hospitality, Residential, Administrative and Commercial Components. Distance Studio Consultants has developed the Master Plan for the city including Infrastructure and Landscape.

Project Scope

- Urban planning
 - Infrastructure
 - Landscape
- Concept Design
 - Schematic Design
 - Detailed Design
 - Tender Documents



CP2

Riyadh, KSA

Mohamed Bin Ladin Company

Total Land Area

38,000 sq. m.

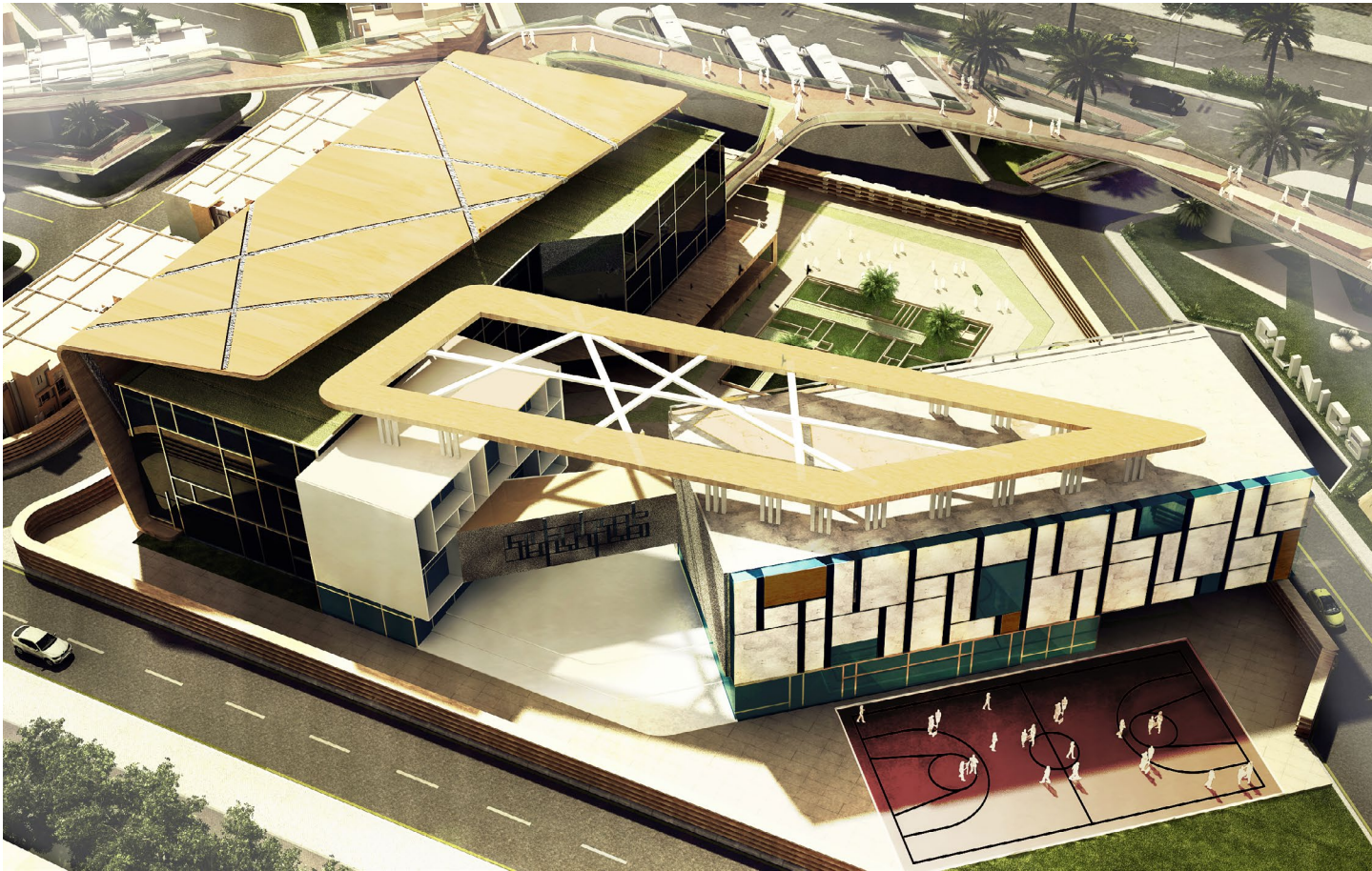
Project Description

CP2 enjoys a strategic location in North Obhur, which is strongly recognized as a premium area in the northern part of Jeddah for expatriate compounds with a land area around 38,000 square meters a total built-up area around 63,000 square meters. CP2 is a mixed-use project that would provide a distinguished community offering comprehensive facilities and services within a single location; CP2 comprise a gated residential compound for expatriates, a neighborhood shopping center, private international school and medical center at the center of the project. Overall, the integration of housing units with supporting facilities will help to drive the desire among potential expatriates to occupy residential units.

Project Scope

- Urban Planning
 - Architecture
 - Structure
 - MEP
 - Landscape
 - Infrastructure
- Concept Design
 - Schematic Design
 - Detailed Design
 - Tender Documents





Al Asmakh Mixed-Use Development

Doha, Qatar Sheikh Abdullah Khaled Hamad Al Thani

Total Land Area
508,200 sq. m.

Project Description

The Client has requested from DSC to develop the Masterplan for its new Mixed-Use Development over 121 Feddan (509,000 square meters) in Qatar. The project consists of Housing, Commercial, Services and Green Areas.

Project Scope

- Urban planning
- Infrastructure
- Landscape
- Concept Design
- Schematic Design
- Detailed Design
- Tender Documents



Sama Abha Mixed-Use Development

Jeddah, KSA Confidential

Total Land Area
18.5 Million sq. m.

Project Description

Over 18.5 Million square meters, Distance Studio Consultants are designing a new Mega Mixed-Use Development in KSA to consist of various activities such as Entertainment, Touristic, Educational, Health Care, Commercial and Administrative.

Project Scope

- Urban planning
- Infrastructure
- Landscape
- Concept Design
- Schematic Design
- Detailed Design
- Tender Documents



Al Derayia Development

Al Derayia, KSA

Public Pension Agency

Total Land Area

3,200,000 sq. m.

Project Description

Distance Studio has developed the Master Planning for a land area around 3,200,000 square meters to be a mixed-use development that consists of Multi-families Residential Area, Single Family Residential Areas, Mixed-Use District, Administration, Recreational and Community Services and Facilities.

Scope of Services

- Urban planning
 - Infrastructure
 - Landscape
- Concept Design
 - Schematic Design
 - Detailed Design
 - Tender Documents



Kudwa Development

Mecca, KSA

Al Jiwar Al Sami Development Company

Total Land Area

1,100,000 sq. m.

Project Description

Over an area of 1,100,000 square meters located in Makka El Mokarama in al Kudawa Distract at Abdullah Al Suliman St. Kilo-7, Saudi Arabia, a Mega Mixed-Use Developed is being developed. DSC has developed the Master Plan for this land area to consist of Residential Towers, Retail Shops and Recreational facilities for the residences such as multi-purpose sports halls, children playground, etc..

Scope of Services

- Master planning
 - Infrastructure
- Concept Design
 - Schematic Design
 - Detailed Design
 - Tender Documents



Sheikh Ghanim Compound

Doha, Qatar

Al Sheikh Ghanim Bin Gasem Al Thani

Total Land Area

23,000 sq. m.

Project Description

Al Sheikh Ghanim own two separate plots in Doha, Qatar with a land area around 8,000 and 15,000 sq.m. Each Plot shall has a Residential Villas, Administration Buildings and Gym.

Project Scope

- Urban planning
 - Infrastructure
 - Landscape
 - Architecture
 - Structure
 - MEP
- Concept Design
 - Schematic Design
 - Detailed Design
 - Tender Documents



Sahel Hashish Compound

Sahel Hashish, Egypt

Al Saraya Investment Estate

Total Land Area

97,320 sq. m.

Project Description

Twenty kilometers south of Hurghada, this four-star resort is divided into four zones: a hotel, individual villas, attached chalets, and an area housing services such retail stores and mosques, as well as a clubhouse. Built on high elevation the resort has an open view of the neighbouring golf course and beyond it the Red Sea. Its Mediterranean style utilizes natural stone and wood, its balconies and pergolas looking out to the sea view as well as internal ponds and swimming pools.

Project Scope

- Urban planning
 - Infrastructure
 - Landscape
 - Architecture
 - Structure
 - MEP
- Concept Design
 - Schematic Design
 - Detailed Design
 - Tender Documents



Al Barka Resort

Barka, Sultanate of Oman

Confidential

Total Land Area

35,760 sq. m.

Project Description

Distance Studio Consultants has developed a Concept Design for Al Barka Resort in Oman over a land area around 35,760 square meters. The project consists of Villas, Chalets, Recreation Areas, Kids Area including playgrounds and Animal Shed.

Project Scope

- Urban planning
 - Infrastructure
 - Landscape
 - Architecture
 - Structure
 - MEP
- Concept Design
 - Schematic Design
 - Detailed Design
 - Tender Documents



Dar El Wesal Compound

Riyadh, KSA

Dar El Wessal Real Estate Company

Total Land Area

25,000 sq. m.

Project Description

Compound Life Can Be Similar to Living an “International Country Club” Lifestyle Within A gated Community. Dar Al-wessal Residence is a luxurious Residential apartment building consisting of 7 floors (Ground floor, four typical floors and two penthouses). The land area 8,692 m , with total built up area 24,967 square meters. Designed in a Modern Style.

Project Scope

- Urban planning
- Infrastructure
- Landscape
- Architecture
- Structure
- MEP
- Concept Design
- Schematic Design
- Detailed Design
- Tender Documents



Al Riyadh Compound

Al Riyadh, KSA

Total Land Area

1,923,492 sq. m.

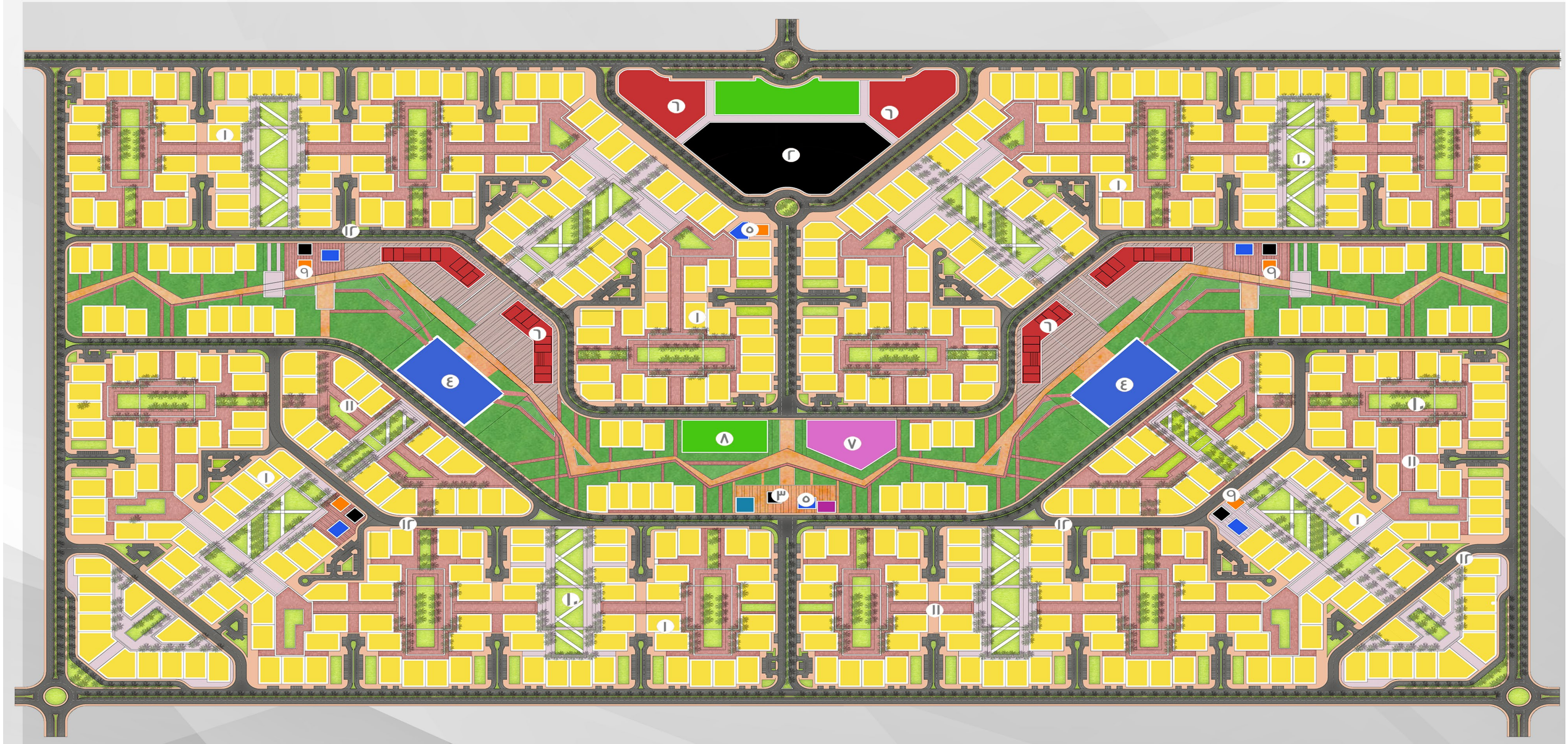
Confidential

Project Description

Distance Studio Consultants has developed a Concept Design for 1,923,492 square meters in Riyadh to be a Residential Compound. The Compound consists of Residential Units (Villas, Twins, Towns and Buildings), nursery, elementary school, commercial and administrative building.

Project Scope

- Urban planning
 - Infrastructure
 - Landscape
- Concept Design
 - Schematic Design
 - Detailed Design
 - Tender Documents



Porto Lagoon

North Coast, Egypt

Amer Group

Total Land Area

120,000 sq. m.



Project Description

Golf Porto Marina is a picture-perfect residential, shopping and golfing paradise set on 1.5 million square meter plot of land that flanks Egypt's fashionable north coast. The project has a total plot area around 114,000 square meter and 2,130 residential units distributed on 19 buildings with total built up area about 120,000 square meter and total area of commercial 2490 square meter with a huge lagoon around 40,00 square meter.

Project Scope

- Urban planning
- Infrastructure
- Landscape
- Architecture
- Structure
- MEP
- Concept Design
- Schematic Design
- Permit Documents
- Detailed Design
- Tender Documents



Kingsrange - NH06

6th of October City, Egypt

New Giza Company

Total Land Area

513,120 sq. m.

Project Description

New Giza for Real Estate Development and Investment are developing one of their neighbourhoods in their mega mixed use development in 6th of October City; Kings-range. The project has a total land area around 513,000 m2 with public area is 88,375 m2, Roads area around 93,000 m2 and 442 units of town-homes, twin homes and stand alone

Project Scope

- Landscape
- Concept Design
 - Schematic Design
 - Tender Documents

Alt. 1





New Menia City Competition

Menia, Egypt

Total Land Area

1,320,000 sq. m.

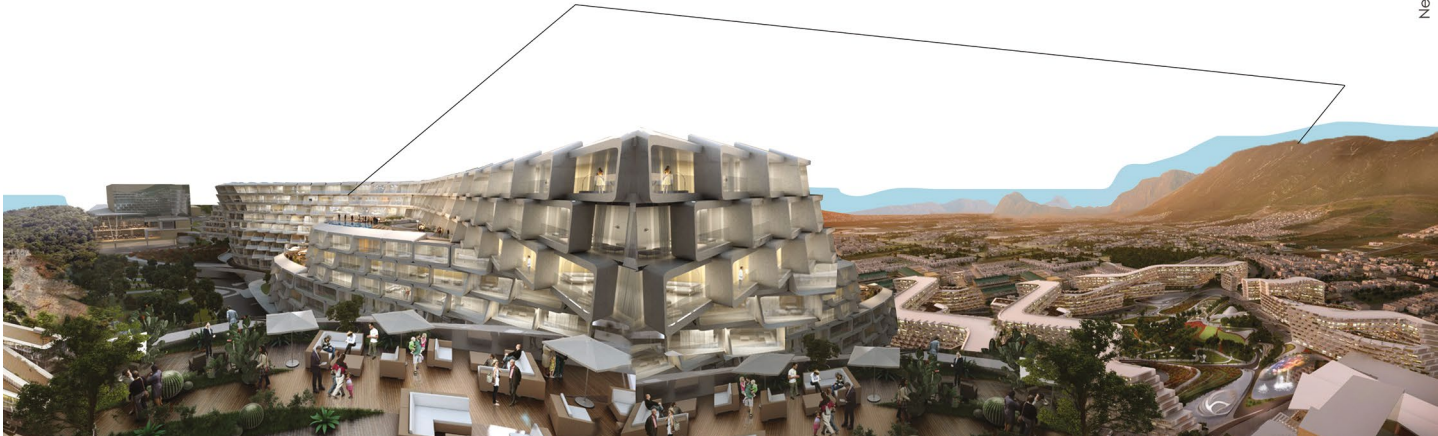
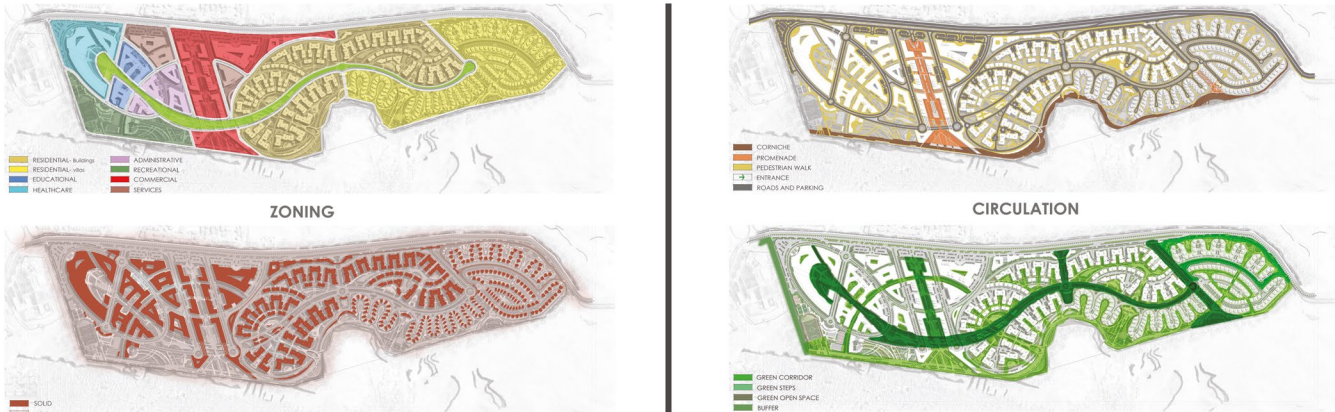
Project Description

ARDIC has issued a pre-concept design competition for 1,320,000 square meters in New Menia City, Egypt. The program is planned to be the first integrated mixed-use complex in Menia governorate. The program shall comprise all residential, commercial, business, educational, healthcare and recreational needs for the resident community and the visitors. The program shall be the first recreational destination in upper Egypt and shall have several recreational services including kids park, recreational park, sports club, club house and celebration halls. The services offered for the complex non-residence should ensure privacy, peace of mind and comfort environment. The residential component equals 60% of the project area, the remaining 40% is for investment use.

Project Scope

- Master planning
- Concept Design

ARDIC



Alexandria Palm Compound Competition

Alexandria, Egypt

Palm Hills Development

Total Land Area

638,400 sq. m.

Project Description

Mixed-use Development in Alexandria over 152 Feddan (638,400 square meters) located in the new strategic Master Plan of Alexandria. The Client would like to develop an integrated community with a Roman or Greek Architecture Style that offers Standalone Villas, Twin Villas, Family Houses, Condominiums and 7 Storey High Buildings as well as Commercial, Administrative and Educational complexes. The compound shall comprise 2 to 3 recreational hubs that includes kids club, youth complex, multi-purpose halls, etc.

Project Scope

- Master planning
- Concept Design

Alt. 2



Alt. 1



Alt. 3



Souq Muscat

Muscat, Sultanate of Oman

Confidential

Total Land Area

100,000 sq. m.

Project Description

Souq Musqat was designed to preserve this ancient and traditional architecture that is characterised by its simple lines, it avoids high rises, yet maintains an understand elegance of its own, the castles, forts and walls are a testament to anarchitectural style that has defence in mind, the most famous being jabreen castle and Bahla fort and walls (sur Bahla).

Project Scope

- Urban planning
- Concept Design
- Architecture



West Bay North Beach Development

Doha, Qatar

Confidential

Total Land Area

Confidential

Project Description

The site holds considerable potential to add significantly to the City experience whilst enhancing and protecting the existing real estate value of West Bay. project's aim is to Create a distinctive and activated waterfront that that is family orientated providing creates a new destination offering appropriate attractions and facilities for residents and visitors alike, and to Connect West Bay North and the Corniche to the waterfront.

Project Scope

- Urban planning
- Architecture
- Concept Design



New Kampala Compound

Lake Victoria, New Kampala, Uganda

Confidential

Total Land Area

Confidential

Project Description

This extension of Uganda's capital includes both middle-class residential units in 8-10 floor buildings and luxurious housing. Built on a lake bay, water views are afforded from nearly every structure. The compound houses a yacht marina, a golf course with villas, a 7-star hotel and resort, a shooting club, an equestrian club, and office towers of up to 30 floors that serve as landmarks seen from afar.

Project Scope

- Urban planning
- Concept Design



Mekkah Station

Mekkah, KSA

Al Ayuni Investment & Contracting Co.

Total Built-Up Area

29 Kilometers

Project Description

Construction of Bus Stops on Local and BRT routes over a length of 559 KM and Construction of 7 new Pedestrian Bridges and 4 Terminal Stations. The Makkah Bus System comprises the construction of 510 Bus Stops Serving 12 Routes; 4 are local and 8 BRT.

Project Scope

- Urban planning
 - Roads
 - Landscape
 - MEP
 - Architecture
 - Structure
 - Infrastructure
- Concept Design
 - Detailed Design
 - Issue for construction



PHIA

Al Ain Al Sokhna, Egypt

Tatweer Misr

Total Land Area

72,000 sq. m.

Project Description

Tatweer Misr Group is holding a land of a total area 72,000 sq. m within the already existing compound IL MONTE GALALA “IMG” which is 2.5 million square meter in El Ein-El-Sokhna. The 2.5 million square mega development IMG is to be extended with a new phase under the name of “PHIA”. The project consists of the following components; Residential apartments that consists of two main components; Residential Buildings and Cabanas, Club House, Restaurant, Swimming Pool and Utility Buildings.



Project Scope

- Architecture
- Structure
- MEP
- Infrastructure
- Urban Planning
- Roads
- Concept Design
- Concept Design validation
- Schematic Design
- Permit Documents
- Detailed Design
- Tender Documents
- Tendering & Evaluation
- Construction Supervision



Taiyba Residential Complex

Jeddah, KSA

AL Otair Trading & Industry Group

Total Built-Up Area

35,000 sq. m.

Project Description

Taiyba residence is located on the strip line of Cornish Jeddah with a land area of 10,300 square meters and a total built-up area of 35,000 square meters . It's considered a prime location due its proximity to sea shore & various nearby recreational facilities among which is the Red Sea mall. The residence complex comprises of 14 residential building and a mosque with a total of 128 luxury apartments and 14 exquisite penthouses each residential unit has its own parking space along with a driver's room located in the ground floor in addition to the availability of all support services and smart home systems.



Project Scope

- Urban planning
- Architecture
- Structure
- MEP
- Interior Design
- Concept Design
- Schematic Design
- Permit Documents
- Detailed Design
- Tender Documents
- Tendering & Evaluation
- Construction Supervision





CFC Residential Apartments

New Cairo, Egypt

Al-Futtaim Group Real Estate LLC

Total Land Area

71,013 sq. m.

Project Description

Residential Building E shall lie in 4 Plots; 13a01, 130a02, 13a03 and 13a04 over a total plot area of 56,359 square meters and a total built-up area of 71,013 square meters. The Building shall consist of Ground and Six Floors.

Project Scope

- Urban planning
- Concept Design
- Architecture



Al Seeb Compound

Sultanate of Oman

Inma Property Development

Total Built Up Area

15,337 sq. m.

Project Description

Inma Properties Development has a land 15,337 square meters in Seeb corniche area and intends to build a compound consists of a villas and twin villas with the following requirement; Separate villa of minimum 4 + maid rooms, Villa built-up area to be from 280m2 – 300m2 of G + F + Penthouse, Private pools in some villas.

Project Scope

- Architecture
 - Landscape
 - Urban Planning
 - Roads
- Concept Design
 - Schematic Design
 - Detailed Design
 - Tender Documents
 - Tendering & Evaluation



Al Tilal Residential Compound

Al Madina, KSA

Dar El Arkan Real Estate Company

Total Built-Up Area

Confidential

Project Description

DSC designed ten prototype villas for this project, split between simple Arab and Mediterranean styles. Each villa consists of a ground and first floor, in addition to a servant's annex and driver's room, and includes separate men's, women's, and family seating areas. The project is located only ten kilometers south of the Grand Mosque of Medina.

Project Scope

- Urban planning
 - Infrastructure
 - Landscape
 - Architecture
 - Structure
 - MEP
- Concept Design
 - Schematic Design
 - Permit Documents
 - Detailed Design
 - Tender Documents
 - Construction Supervision



Fakhro Residence Compound

Doha, Qatar

Confidential

Total Built-Up Area

Confidential

Project Description

A compound designed with the inspiration of the French Architecture that offer its residence a lot of charm with its distinctive characteristics. These French style houses generally have asymmetrical exteriors with a combination of ornamental attributes that complete the design.

Project Scope

- Urban planning
- Infrastructure
- Landscape
- Architecture
- Structure
- MEP
- Concept Design
- Schematic Design
- Detailed Design
- Tender Documents



Almostakbal City “Land C” Competition

New Cairo, Egypt

Al Ahly Real Estate Development Company

Total Built-Up Area

455,700 sq. m.

Project Description

Within the Mega Mixed-Use Development, Al Mostakbal City, DSC has competed for the complete design of Land C of a land area around 455,700 square meters. The project consisted of three Residential Building types; Town house, Duplex and Apartment Buildings to have a total of sellable area around 360,000 square meters.

Project Scope

- Urban planning
- Concept Design
- Architecture



Allora Compound

Egypt

Confidential

Total Built-Up Area

126,000 sq. m.

Project Description

A Mixed Use Development is developed over an area of 205,000 square meters; Cleopatra Resort that shall consist of Residential Units, Mall, Hotel, School and Medical Center as well as Petrol Station. The Project has an over all total built-up area around 126,000 square meters. The project design has been inspired by the city of Tuscany. The theme is not only an architectural style but also an Italian like environment with its distinctive trees and warm countryside atmosphere.

Project Scope

- Architecture
- Urban Design
- Concept Design





Manazel Qurtoba Residence

Riyadh, KSA

Alargan Real Estate Group

Total Built-Up Area

Confidential

Project Description

Manazel Qurtoba is one of the largest integrated residential neighborhoods on the outskirts of the city, designed for the middle-income segment in the city of Riyadh, Kingdom of Saudi Arabia.

Project Scope

- Urban planning
 - Infrastructure
 - Landscape
 - Architecture
 - Structure
 - MEP
- Concept Design
 - Schematic Design
 - Detailed Design
 - Tender Documents
 - Tendering & Evaluation
 - Construction Supervision



Grain Silos Factory

Cairo Alexandria Desert Road, Egypt

Fat Hens Company

Total Land Area

45,000 Sq. m.

Project Description

Mr. Hegazy is developing a Grain Silos Factory on the Cairo Alexandria Desert Road over a land area around 45,000 Square meters. The project shall include the Main Factory Building, Corn Silos, Soy Silos, Services Buildings such as Administrative Building, Electrical Rooms, Masjid, Full Product Stores, Final Product Stores, WaterTanks, Fences and Gates.



Project Scope

- Urban planning
- Infrastructure
- Landscape
- Architecture
- Structure
- MEP
- Interior Design
- Concept Design
- Schematic Design
- Detailed Design
- Tender Documents
- Tendering & Evaluation
- Construction Supervision
- Construction Management



El Rubiki Industrial City

Egypt Ministry of Industry and Trade

Total Land Area

11 Feddan

Project Description

El Rubiki is one of the most important specialized industrial cities designed according to the latest international standards. The components of the Al-Rubiki Leather City project include an area of production units and auxiliary services on an area of 511 feddan, which includes a model tannery similar to the international tanneries to be a good example of development and modernization. In the sector to hone their technical skills, according to the latest international models, in cooperation with the Italian expertise. As in the central treatment plant, sewage, sewage and utilities, as well as sewage, in addition to sewage and product on an area of 280 feddan.

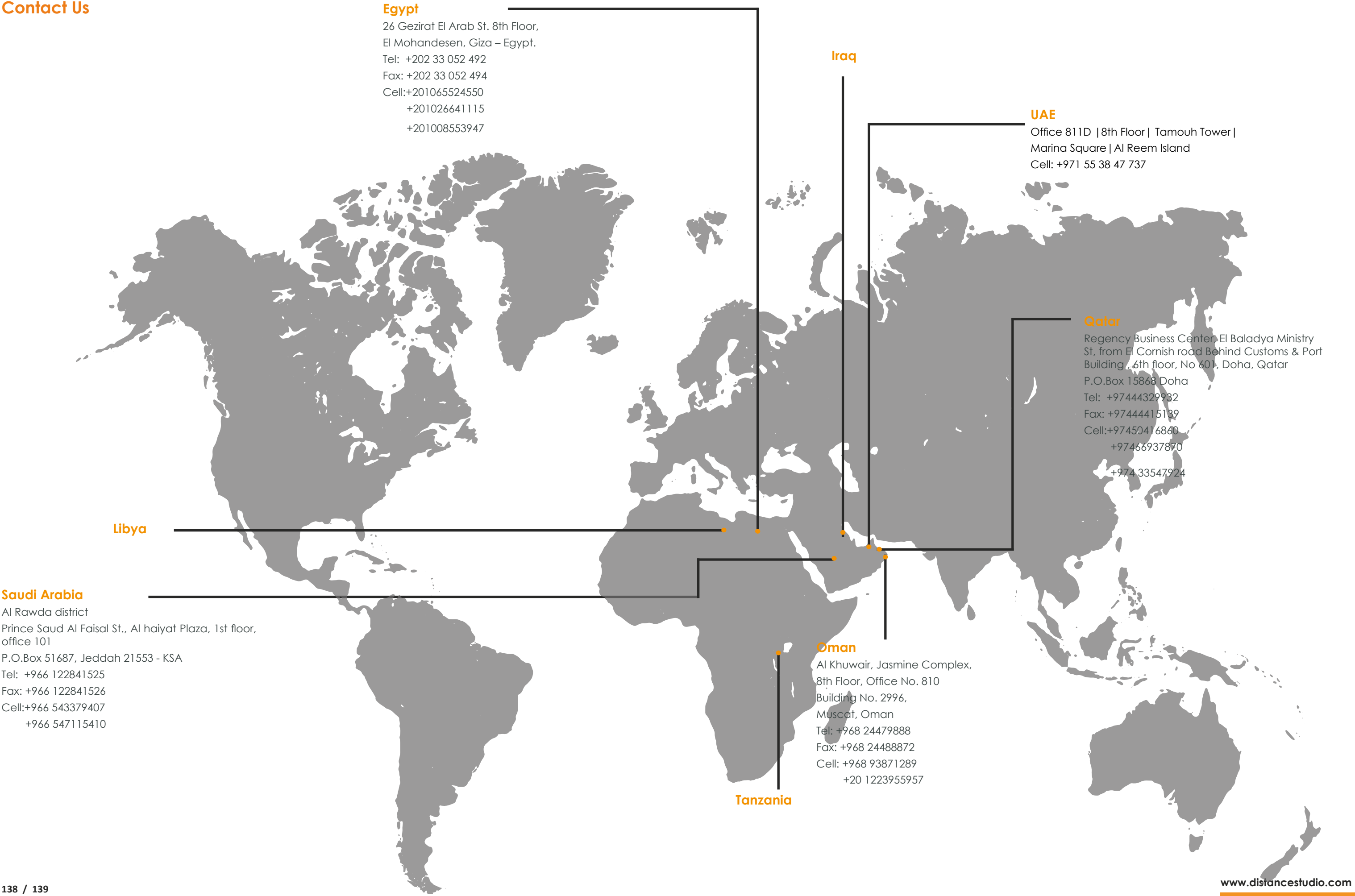


An area of 6000 square meters with the Italian side, as well as integrated industries (gelatin and glue projects, warehouses, chemicals, stores) and a heritage residence dedicated to showing the stages of the leather industry in Egypt, map of Egypt.

Project Scope

- Master planning
- Concept Design
- Detailed Design





Egypt
26 Gezirat El Arab St. 8th Floor,
El Mohandesen, Giza – Egypt.
Tel: +202 33 052 492
Fax: +202 33 052 494
Cell:+201065524550
+201026641115
+201008553947

Iraq
UAE
Office 811D | 8th Floor | Tamouh Tower |
Marina Square | Al Reem Island
Cell: +971 55 38 47 737

Qatar
Regency Business Center, El Baladya Ministry
St, from El Cornish road Behind Customs & Port
Building , 6th floor, No 601, Doha, Qatar
P.O.Box 15868 Doha
Tel: +97444329932
Fax: +97444415139
Cell:+97450416860
+97466937870
+974 33547924

Libya
Saudi Arabia
Al Rawda district
Prince Saud Al Faisal St., Al haiyat Plaza, 1st floor,
office 101
P.O.Box 51687, Jeddah 21553 - KSA
Tel: +966 122841525
Fax: +966 122841526
Cell:+966 543379407
+966 547115410

Oman
Al Khuwair, Jasmine Complex,
8th Floor, Office No. 810
Building No. 2996,
Muscat, Oman
Tel: +968 24479888
Fax: +968 24488872
Cell: +968 93871289
+20 1223955957

Tanzania

www.distancestudio.com

